



The Dyfi Eco Valley Partnership (**ecodyfi**)

Sustainable community regeneration

Andy Rowland
Manager

3rd September 2004

What are we doing?



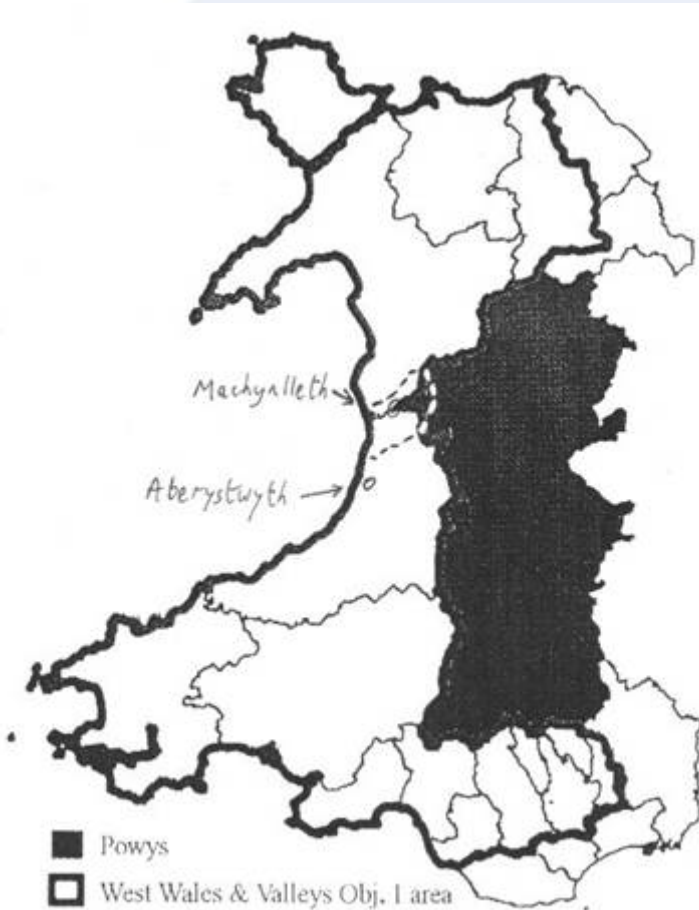
**Improving our quality of life
in ways that don't destroy the very
things we value and need**

**Developing a robust
economy, a strong sense
of community and a
healthy environment**



Working in partnership

The Dyfi valley



- Coastal mid Wales
- Machynlleth
- 12,300 people
- 55% Welsh-speaking
- 74,000 hectares
- family hill farms
- tourism & other services

Some characteristics

- serious decline in farm incomes
- youth out-migration
- change in community composition
- economic fragility (foot & mouth)
- environmental assets (landscape & habitats)
- language and culture
- people working together
- sustainable technology business cluster

What is the Dyfi Eco Valley Partnership?

A local organisation bringing people together

to foster sustainable community regeneration in the Dyfi valley

We call it **ecodyfi** for short

**ecology &
economy**

Development

- Partnership development (organisations) 1997
- First project and one staff member started 1998
- Company limited by guarantee 1999
- Review (wider agenda & local control) 2002
- 17 local people running it voluntarily
- 1 full time & 2 part time paid staff
- 6 Information Centre & project volunteers
- £100,000 turnover 2003/4, mostly grants
- Works with local and other partners

Evolution

- Powys County Council, Dulas & CAT
- Climate change
- Business cluster development
- Focus on specific sectors
- Started with renewable energy
- Local & independent
- Local needs – broad agenda
- Social benefits through working on economy and environment
- Re-location to town centre

WHAT: 1998 – 2001

Tourism

Energy

Waste

Woodlands

Transport

Coodyfi

WHAT: 1998 - 2004

Youth

Housing

Enterprise

Tourism

Energy

Waste

Woodlands

Broadband

Transport

Community consultations
and planning

Horticulture

Main initiatives

- a) Renewable energy
- b) Sustainable tourism
- c) Waste minimisation
- d) Others!

Core funding: Community Regeneration Toolkit of the Welsh Development Agency

www.ecodyfi.org.uk

Main initiatives

a) Renewable energy

Funding:

European Regional
Development Fund

Welsh Development Agency,
Powys County Council

Dulas Ltd

Shell Better Britain Campaign

www.ecodyfi.org.uk

Dyfi valley energy economy

- Widespread use of water power till 1950s
- Became dependent on electricity imported into the local economy (little mains gas)
- About £4 million spent on energy annually
- Commercial wind farms produce about as much *electricity* as is consumed locally
- Most energy for *heating* is still imported
- Experience and reputation for renewables

Project aims

- Encourage local people to consider energy issues, including the economic and environmental implications of energy use
- Establish some “community-based” renewable energy installations
- Improve understanding and support for renewable energy by maximising local benefit and by taking a consensus approach

Project tools

- Project officer based in the area from June 1998 to promote the project, seek out opportunities, make connections, do (or arrange) initial free desk studies and “hand-hold” those interested in investing in a RES scheme
- 50% subsidy for feasibility studies
- Up to 30% capital grants

Completed RES schemes

- 16 schemes grant-aided (up to 30% of costs)
- representing £341,340 invested
- including £97,340 of ERDF grant aid
- plus solar water heating at 10 houses
- 205 kW electrical capacity (hydro, wind, solar)
- plus 150 kW heat capacity (solar, wood, heat pump)

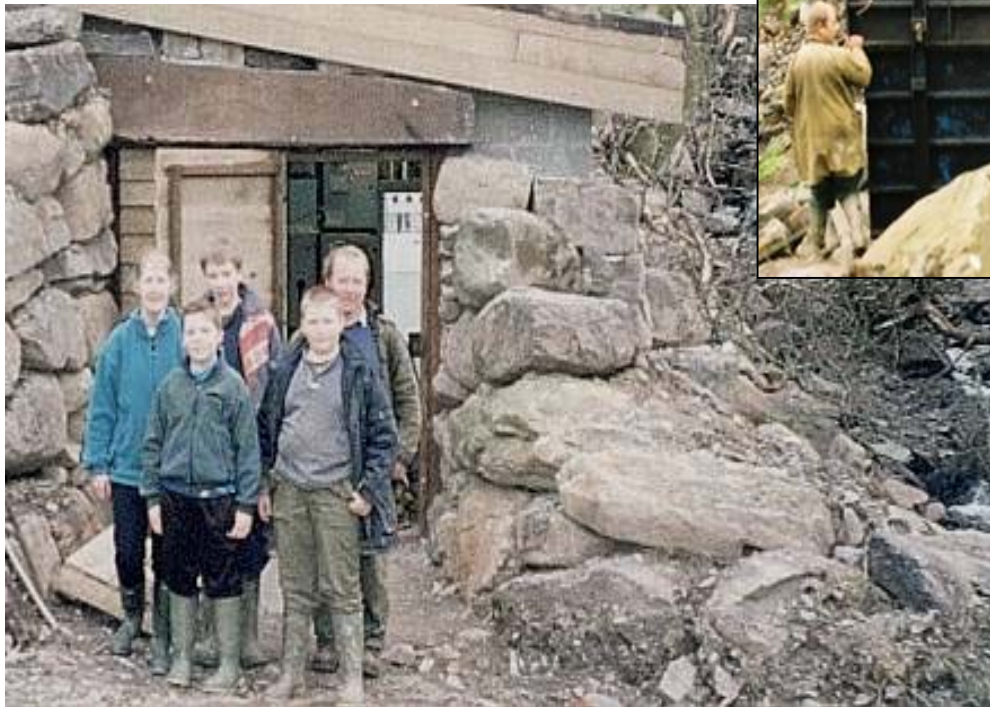
Taking it further

- Rolled out to the rest of Powys through an Objective 2 ERDF project. Dyfi valley focus on wood and solar heat.
- Won “Best rural partnership” in EC Campaign for Take Off 2002
- Won Royal Town Planning Institute award
- Local Energy Fund established with Energy Saving Trust support to reduce energy consumption



120 kW
hydroelectric
scheme at
Maesglas
(2 intakes)

In Berwyn SSSI & Snowdonia National Park



Hill farm
diversification,
selling to grid

75 kW Vestas wind turbine at Pantperthog



Bro Dyfi Community
Renewables Ltd
sells power to CAT



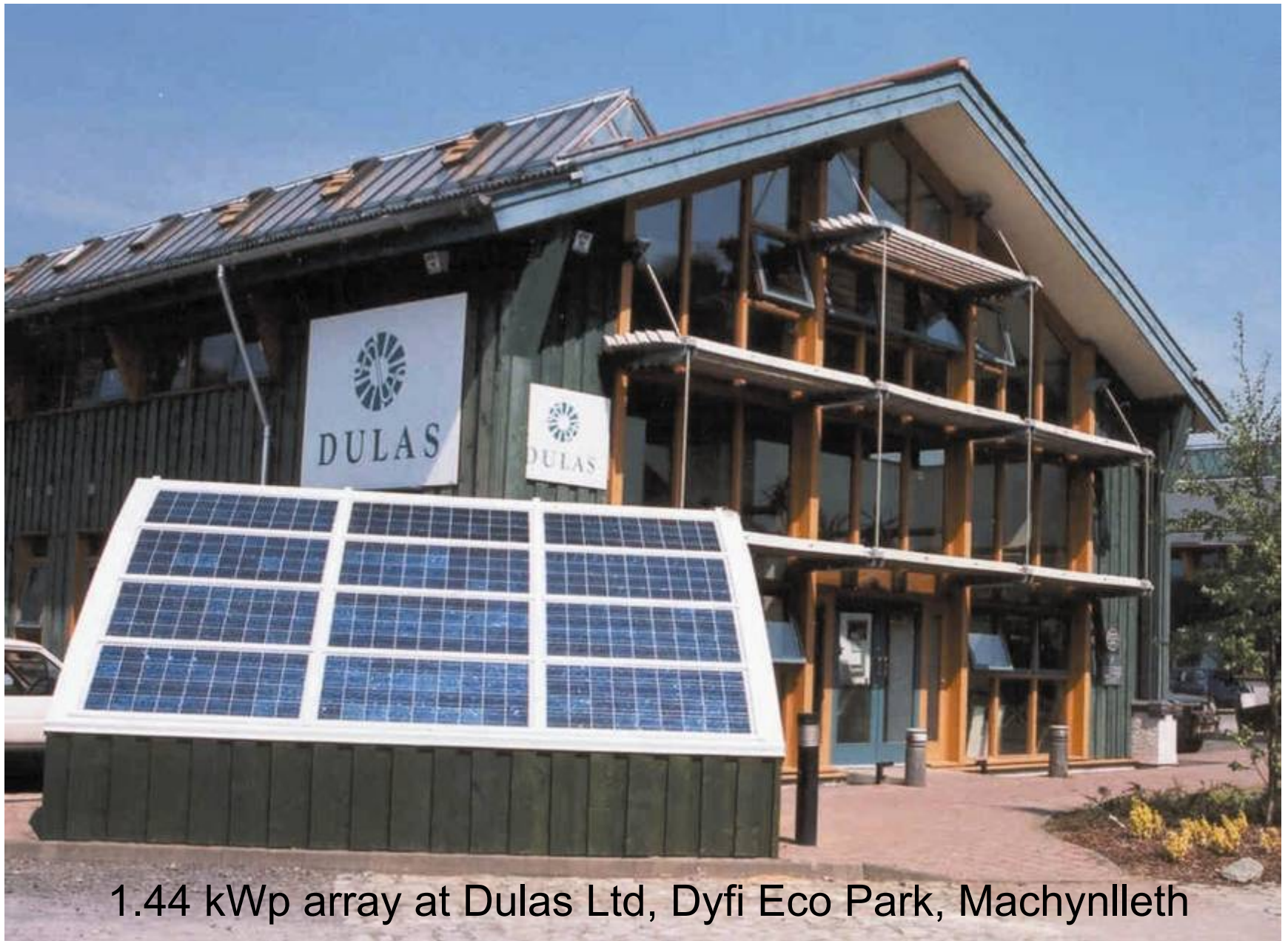


Industrial & Provident Society

59 shareholders, including 8 local contractors, 49 other local people, Baywind Energy Co-op & Energy Saving Trust (EST)

Funding from investors (above), ERDF, EST & ScottishPower Green Energy Trust





1.44 kWp array at Dulas Ltd, Dyfi Eco Park, Machynlleth

Main initiatives

- a) Renewable energy
- b) Sustainable tourism**

*Funding and support:
Wales Tourist Board
Powys and Gwynedd Councils
Tourism Partnership – Mid Wales
Welsh Development Agency*

www.ecodyfi.org.uk

Ecodyfi manages the Dyfi Valley Tourism Growth Area (TGA)

- A Wales Tourist Board (WTB) development initiative to stimulate tourism investment in various parts of Wales
- Ensures WTB capital funding is reserved for this area
- Ecodyfi brings people together to develop projects (not only capital developments)

Examples of TGA project involvement in the Dyfi Valley.....

Aberdyfi Visitor Centre

Initiated by the
Aberdyfi
Partnership



Aims to interpret the
natural and cultural
history of the Dyfi
Valley –

Activity tourism development



- Supporting developments e.g. accommodation for cyclists; new boat for estuary trips

“Dyfi Active”

- Joint marketing plan, web site & training
- Linking activities to accommodation



Cycling off road



- Mach 1,2,3, created by Mach Off-Road Ltd
- Dyfi Trails under construction in the Dyfi Forest

We've advised the Dyfi Enduro event on contacts and funds, as well as various accommodation providers



Dyfi Trails – Targets for June 2004 - June 2005

- Project jobs created – 2 temporary part time
- Business diversification schemes supported – 2
- Business networking/training initiatives – 2
- Environmental improvements - 1
- New direct and indirect jobs – 2.375 FTE
- Jobs safeguarded - 5
- Turnover increase in area £281,290

Gentler cycling



The Dyfi Bridge was a milestone for cyclists. We are working towards safe routes to work and school - and integrating health, pollution, tourism and social aspects of transport needs

Derwenlas – Machynlleth
route 2004 / 2005

“Getting around the Dyfi
Valley”

Events and Festivals

- Advice and support
- Free publicity on www.ecodyfi.org.uk and at Ty Bro Ddyfi



Elemental Earth's Lantern Festival

Equilibre Horse Theatre

Main initiatives

- a) Renewable energy
- b) Sustainable tourism
- c) **Waste minimisation**

Funding:

Powys County Council

Environment Wales (National Assembly)

www.ecodyfi.org.uk

Waste Project Aims



Real nappies promotion

Working with householders and community based groups, to facilitate individual & collective actions to reduce waste in the Dyfi Valley (particularly of materials & energy), thereby raising awareness of sustainability issues

Machynlleth Kerbside & Composting Proposal

Kerbside collection of kitchen waste & paper from houses

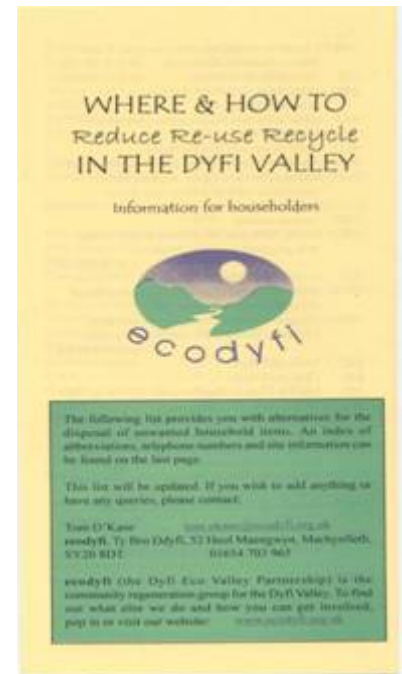
- Collection using a pedestrian controlled vehicle
- Potential to remove 600 tonnes per annum from going to landfill and create 2 new jobs
- Part of Powys Exemplar scheme

Potential further developments

- Add collection of commercial kitchen waste
- Add value to product (compost)

Other “waste” projects

- Schools work
- Pennal household survey and follow-up
- Community Energy (efficiency) Fund
- North Ceredigion kerbside collection



Home composting
training & support in
Gwynedd villages

Main initiatives

- a) Renewable energy
- b) Sustainable tourism
- c) Waste minimisation
- d) **Enterprise, community & partnership working**

www.ecodyfi.org.uk

Tŷ Bro Ddyfi

Community Enterprise
Centre

52 Maengwyn Street



Partnership working

- Community Strategy
- Communities First
- Transport needs survey
- Affordable housing needs survey
- Powys Social Economy Forum
- Cymru Solar



- Mach Teenzone
- Mach Foyer



Consultations and feasibility studies

Ceinws Camp

What does the village want to happen at this site?

Talybont

Would business premises increase village vitality?



Other initiatives

- www.machbroadband.org.uk
- Dyfi Biosphere Reserve conference
- Bro Ddyfi Trail – walking and/or cycling network linking places relevant to sustainable development
- Horticulture
- Wood-fuelled district heating feasibilities
- Replacement 600 kW wind turbine

“Is sustainability costly?”

- Regeneration requires money
- Community regeneration requires time as well
- Doing it sustainably is the way to protect that investment

