



UNIVERSITY OF GLASGOW

CAMPUS DEVELOPMENT PROGRAMME

PUBLIC ENGAGEMENT MEETING

28 MAY 2019



AGENDA

18:10 – Welcome – *Peter Haggarty, UoG, Director of Construction and Capital Programme*

Construction update:

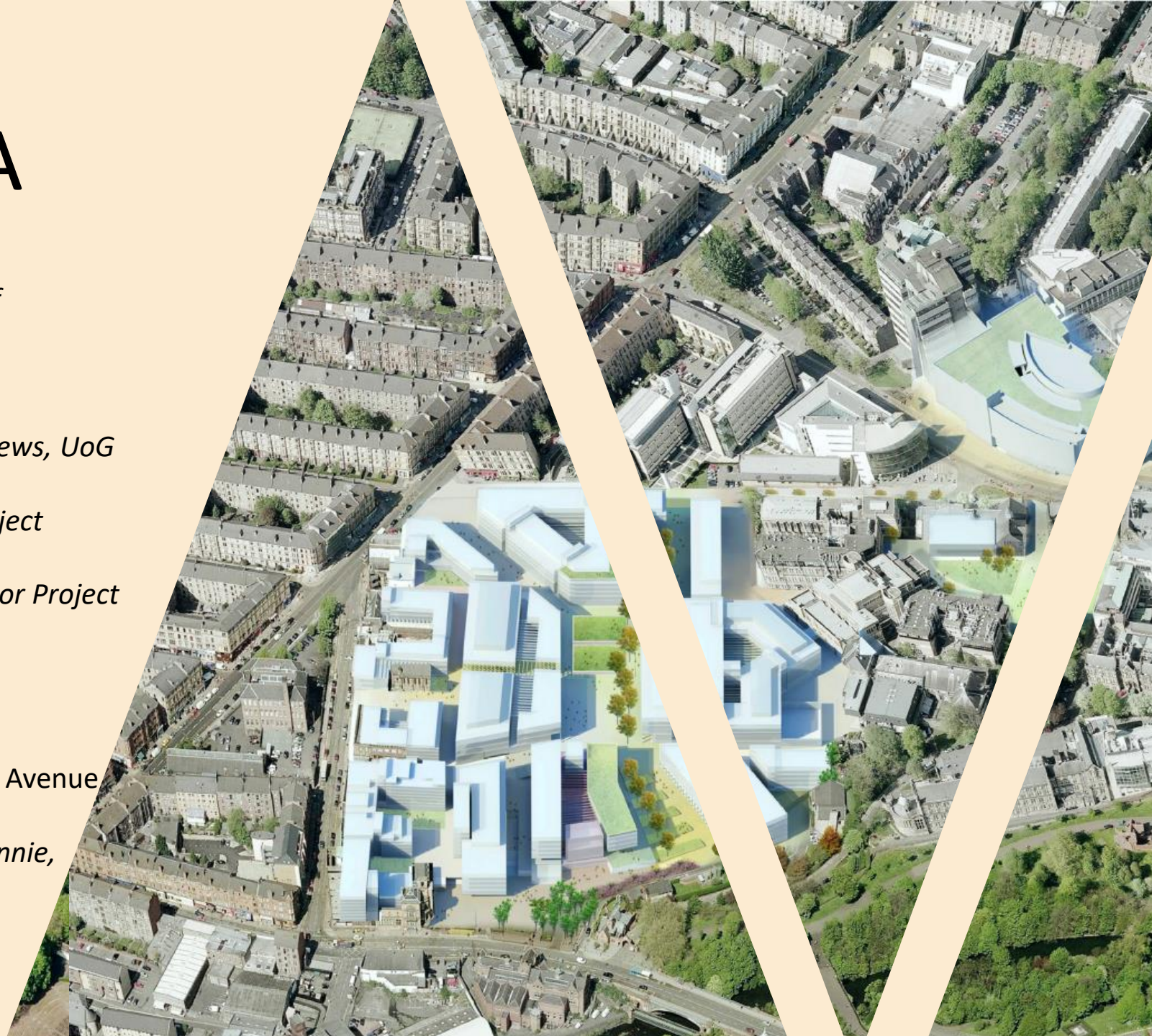
- James McCune Smith Learning Hub – *Robin Andrews, UoG Senior Project Manager*
- Research Hub – *Sharon De Sykes, UoG Senior Project Manager*
- Clarice Pears Building – *Martin Munro, UoG, Senior Project Development Manager*

Infrastructure update:

- Vision for infrastructure – *Martin Tabor, Director, Landscape Architecture, LUC*
- Western campus, University Place and University Avenue – *Fergus Shaw, Construction Director, Multiplex*
- Social value and community benefits – *Kieran Ronnie, Community Engagement Manager, Multiplex*

19:30 – Q&A

20:00 – Finish



James McCune Smith Learning Hub



Robin Andrews
Senior Project Manager



Programme

Start on Site
October 2017

Construction Completion
March 2020

Fit Out Completion
August 2020

Commence Teaching
September 2020



Teaching Spaces

Lecture Theatres

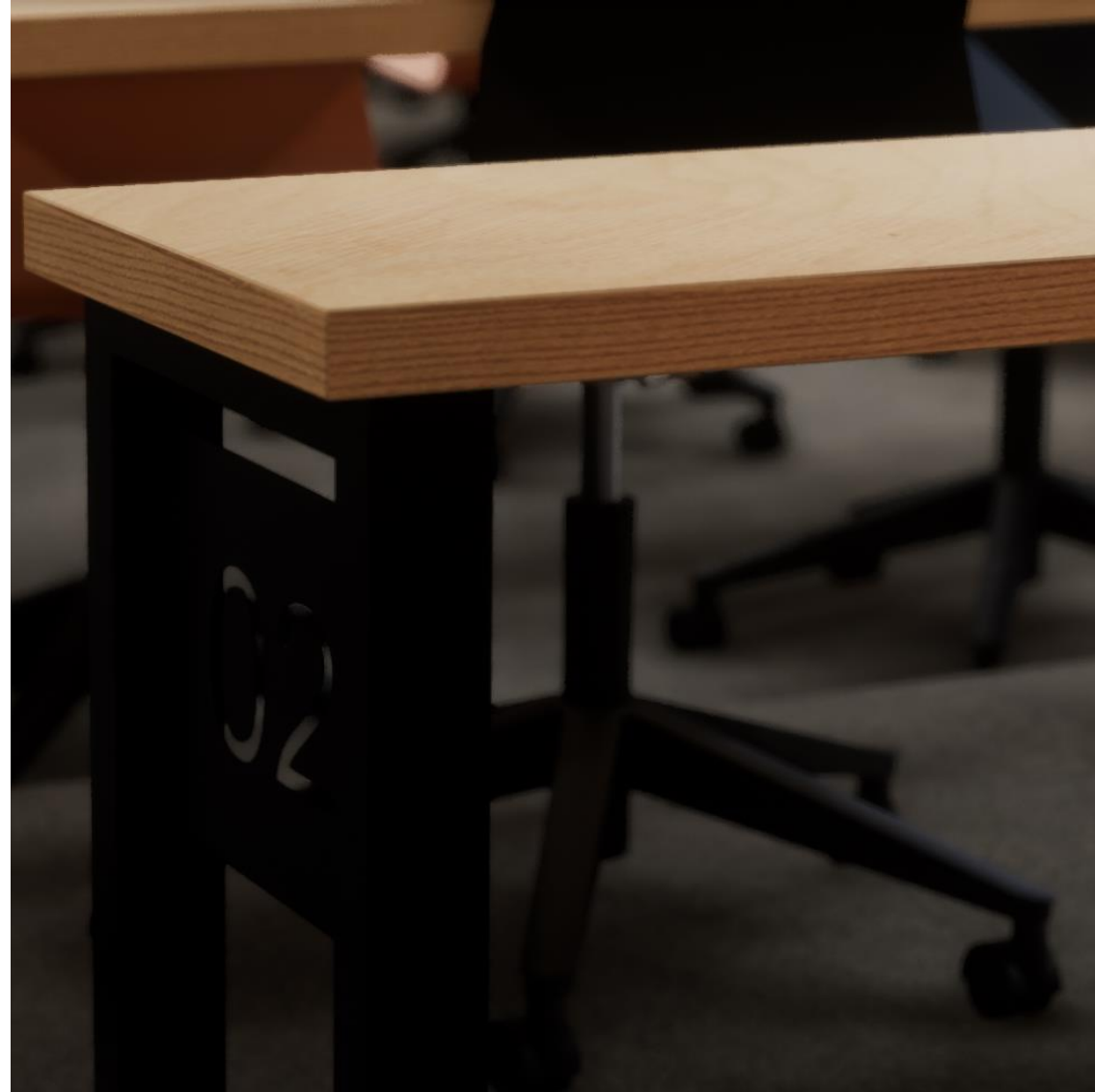
- 250 Seat Lecture Theatre (x2)
- 105 Seat Lecture Theatre
- 240 Seat Lecture Theatre
- 154 Seat Lecture Theatre
- 217 Seat Lecture Theatre

Active Learning Spaces

- 102 Seat Space (x2)
- 54 Seat Space
- 48 Seat Space

Seminar Spaces

- 30 Person Space (x3)
- 20 Person Space (x3)
- 15 Person Space (x2)
- 10 Person Space (x2)



Sustainability

BREEAM Excellent Rating
Photo Voltaic Panels on Roof
Rainwater Harvesting Tank
Storm Water Attenuation Tank
Daylight Sensors
LED Lighting



James McCune Smith Learning Hub

Progress Photos



Boyd Orr Building External Refurbishment

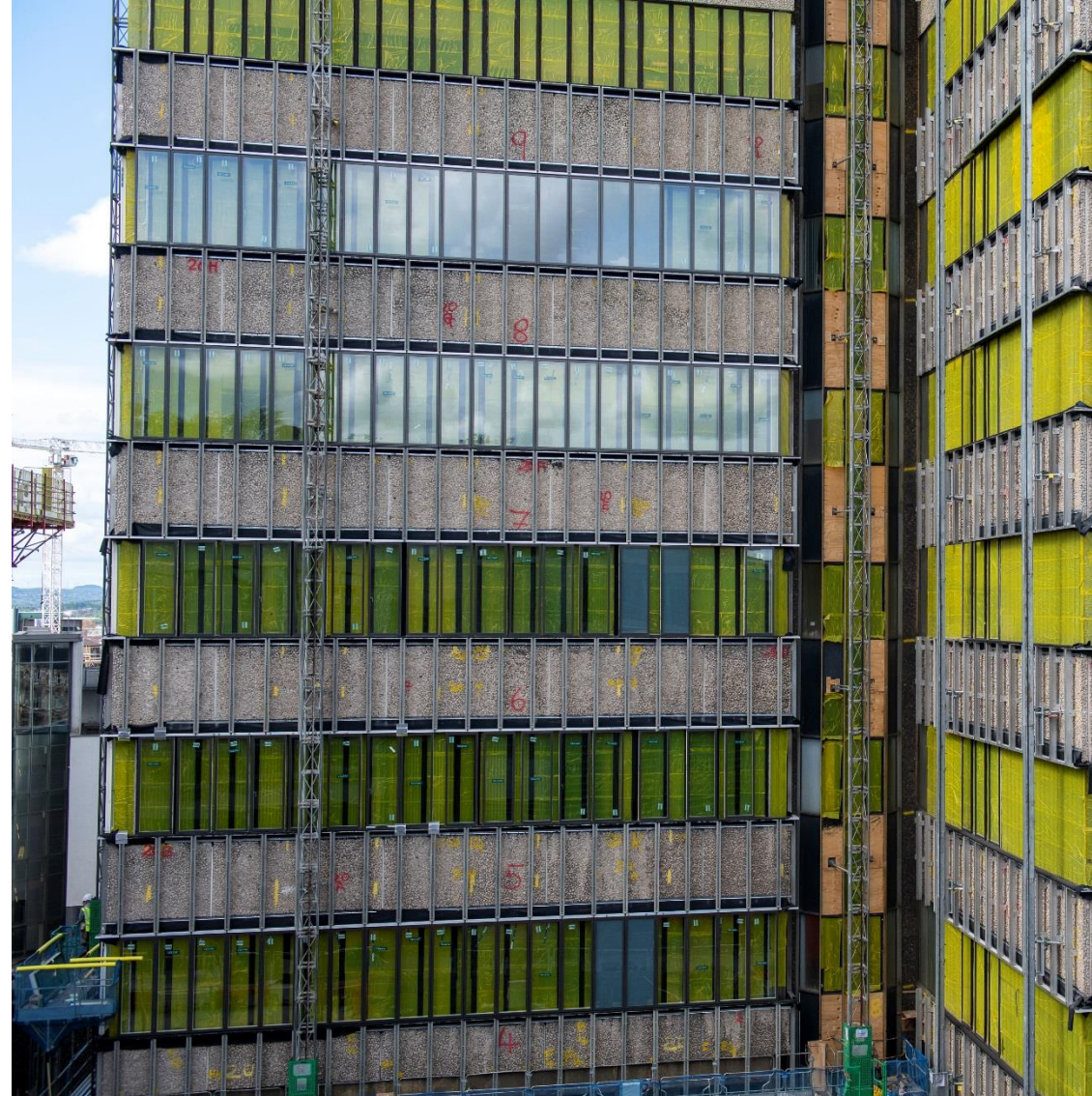
New double glazed
windows

Increased number of
opening windows

Internal Works

Installation of
Installation of new
gender neutral toilets

Links to JMS Learning
Hub on levels 2, 4 and 6





University
of Glasgow

Construction Update

Research Hub

Sharon De Sykes (Senior Project Manager)



Vision

Our vision is to bring together people and ideas from across the disciplines and sectors, enabling new ways of working that will inspire transformational research with international reach, bringing prosperity and well-being for the 21st century.

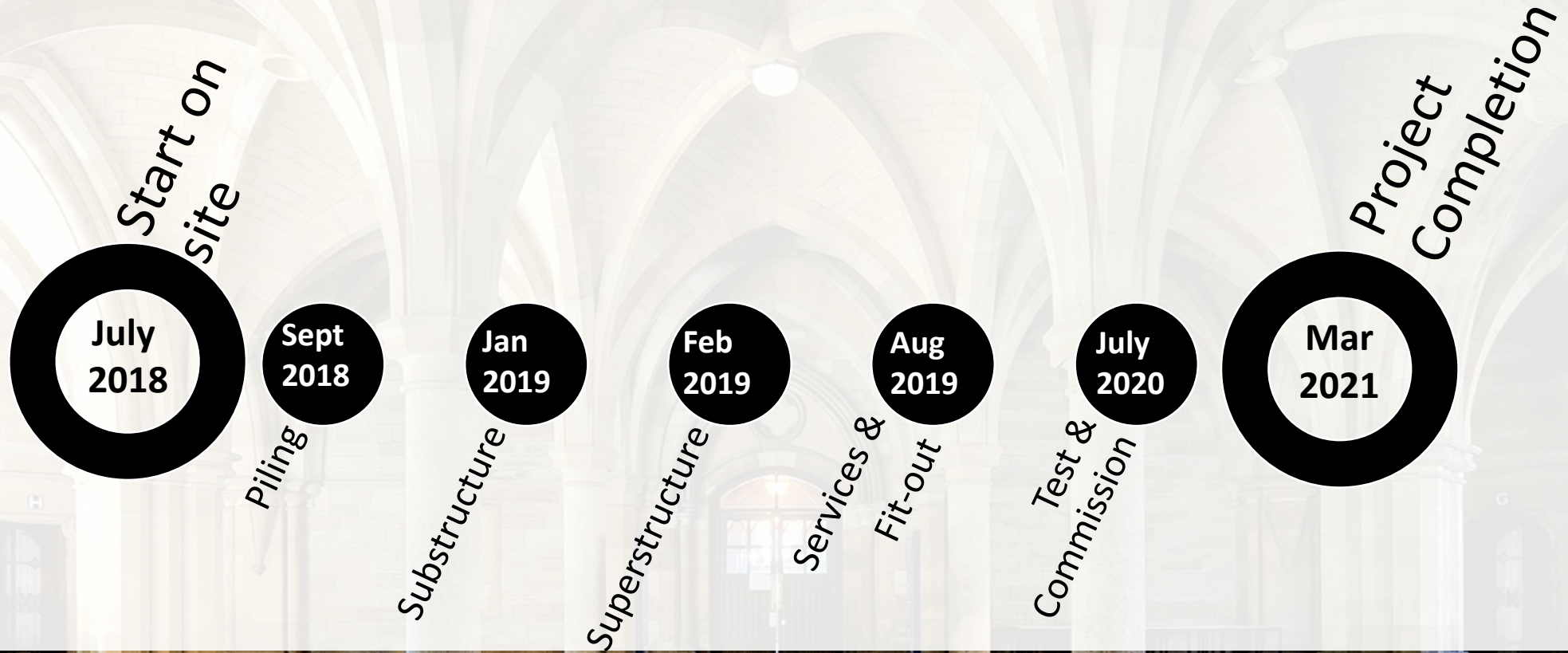
The Research hub will create a free-thinking, collaborative environment to attract, stimulate and enable interdisciplinary and world-changing research and researchers leading to radical new ideas for the 21st Century. It will stand at the forefront of intellectual advances engaging and connecting the University with industry, the City and global communities.

BUILDING IN CONTEXT





University
of Glasgow

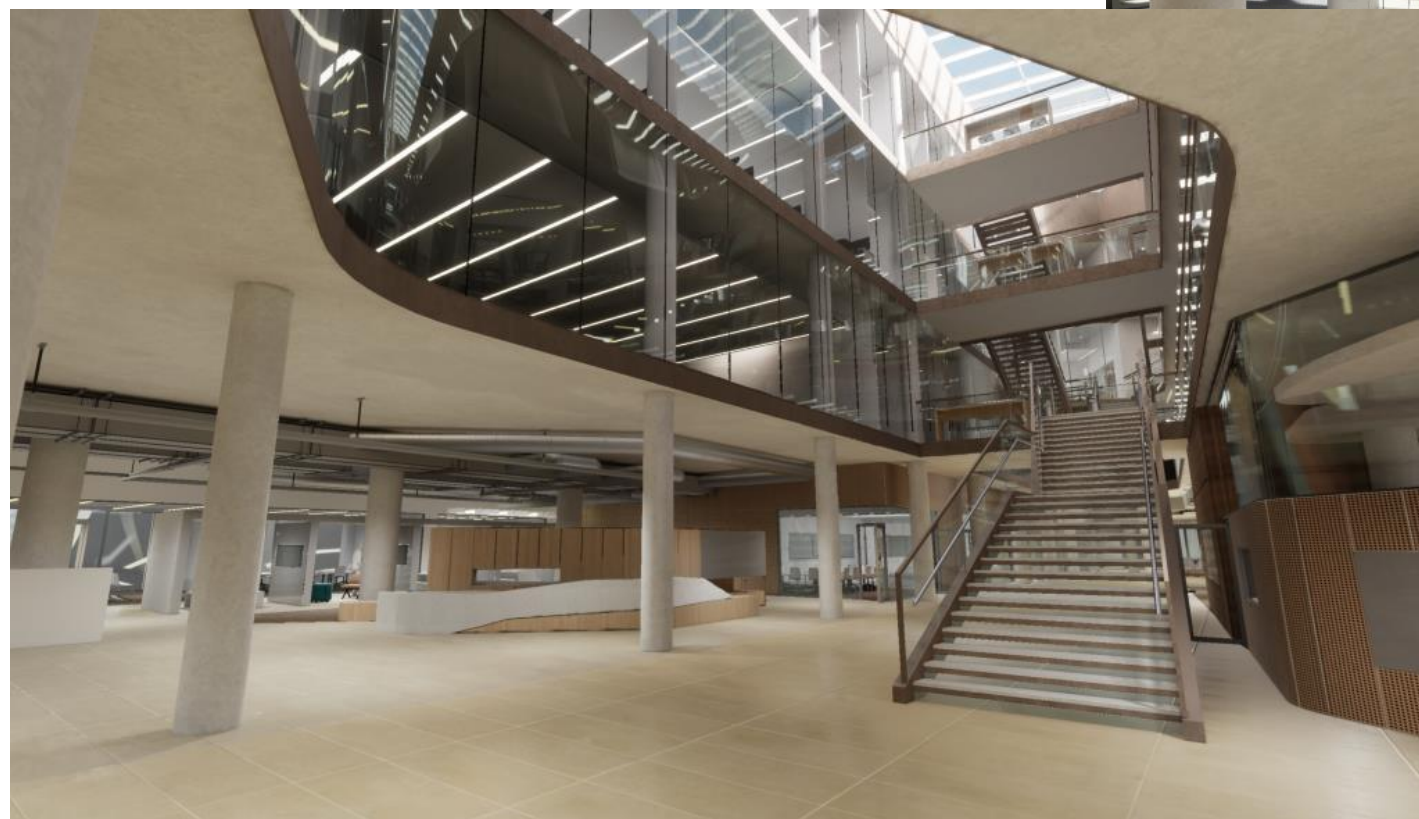




Activity on site

External View; Level 2 Entrance





Public spaces



University
of Glasgow



Clarice Pears Building for Institute for Health & Wellbeing



University
of Glasgow

•Vision;

- The Institute of Health and Wellbeing's vision is to improve health and reduce health inequalities; locally, nationally and globally.

•Output;

- The outputs of the new building will produce local, national and international health and economic benefits; reducing the demand on the health service and increasing productivity through reduced sickness absence and ill-health retirement.

•Method;

- The new building will “Create a world-class environment for research, learning and teaching” & “Promote a culture of public and societal engagement through working with communities, educators, the voluntary sector and policy makers in Glasgow, nationally and worldwide”





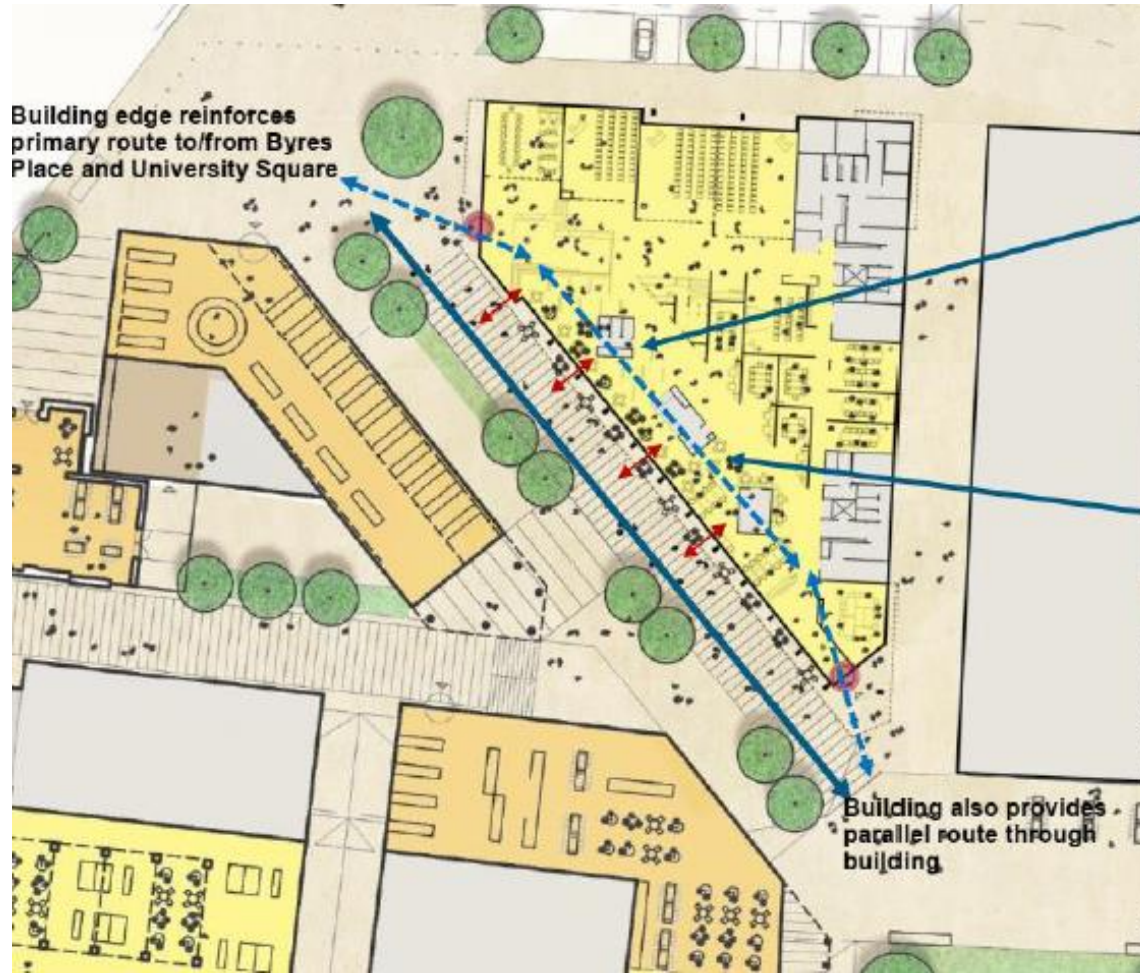
University
of Glasgow

- 5 storey building over approx. 8000m²
- BREEAM excellent & EPC A
- Home to 500 researchers and post grad students, currently based in 9 different locations
- Learning & teaching space for about 300 users & visitors





- Welcoming environment;
 - Publicly café
 - Interactive exhibition
- Space for public engagement
- Opportunities for public to collaborate in the Institute's research



Exhibition space



Café space

Glazed 'shopfront' to entire length of street ensures both a strong visual and physical connection between inside and outside

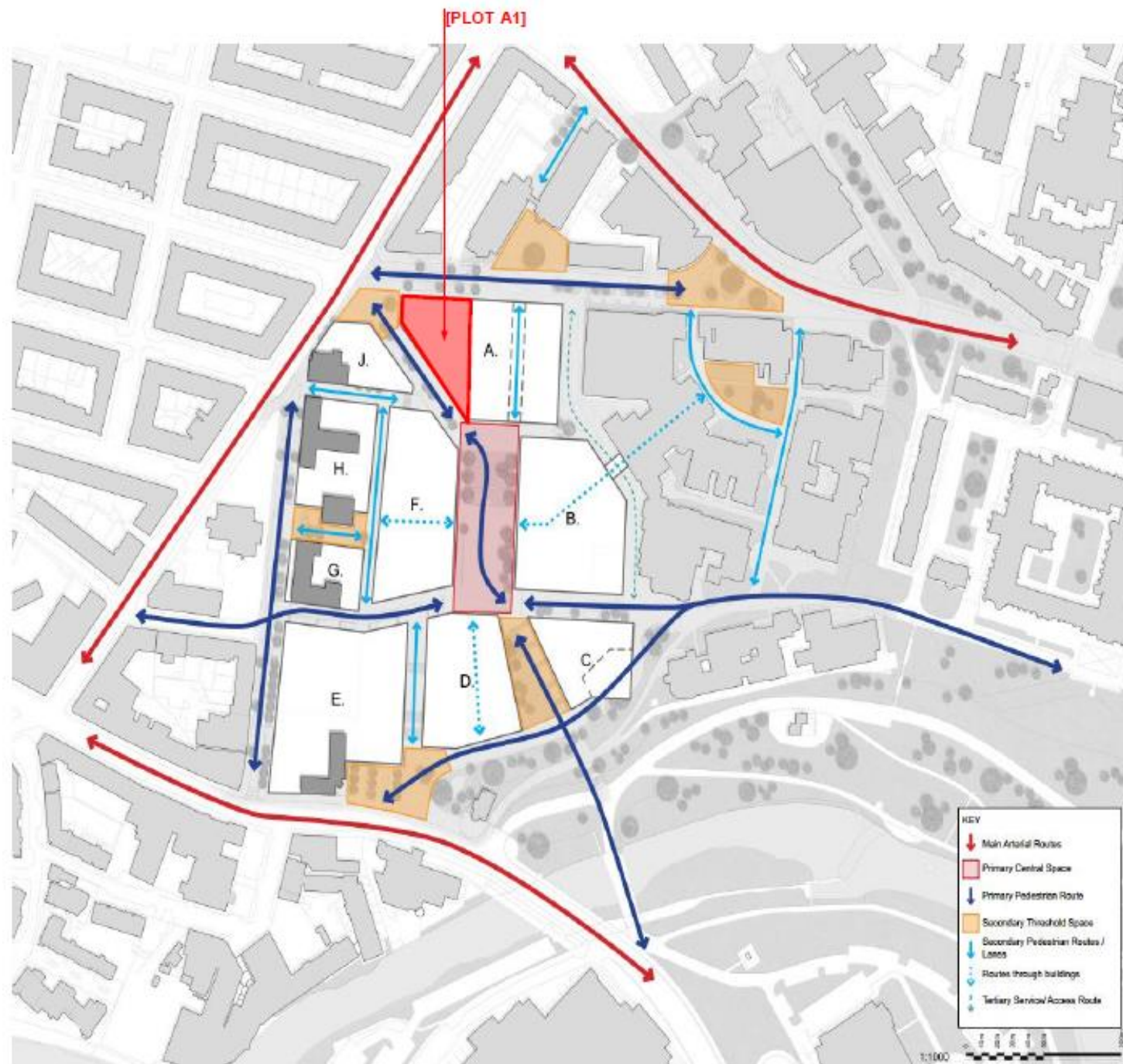
• **Location;**

• Northwest campus gateway

• Visible & accessible;

- To achieve the Institute's ambition of community engagement with research

• Primary pedestrian route from Byres Road, to new civic square at centre of the western campus, Kelvingrove park & Kelvin Hall





University
of Glasgow

•Key Dates;

- Project Approved by UofG in February 2019
- Demolition of stores & laundry buildings currently underway
- Start on site September 2019 – subject to consent
- 87 week project; Construction complete by 2nd quarter 2021
- In use by users & public by 3rd quarter 2021





For any further questions, comments or feedback, please email:

campus-development@glasgow.ac.uk