



Annual Review 2014

I would like to thank all the staff for their hard work and commitment to providing an excellent service to all our Library users, allowing us to maintain a score of 92% in the National Student Survey. I was really pleased to see the stylish redevelopment emerge on Level 3, once again expanding the flexible study options for students. Maintaining funding for books and journals essential to learning and research continues to be prioritised by the University. The REF loomed large in 2014 as the team in the Library focussed on completing the publications list for the submission. Essential support is provided by the Friends of the University Library, who continue to fund specialist activities, often supplementing external grants.



Helen Durrnell, University Librarian.

Highlights and achievements of the year

- level 3 refurbishment during summer 2014
- launch of librarytree project
- REF publications listing delivered on schedule
- establishing a new partnership with the Centre for Battlefield Archaeology and the History subject area
- securing funding to preserve and conserve our earliest shipbuilding drawings in the internationally important William Simons Collection.
- final phase of the Glasgow Incunabula Project
- acquiring significant and rare emblem books for the Stirling Maxwell Collection



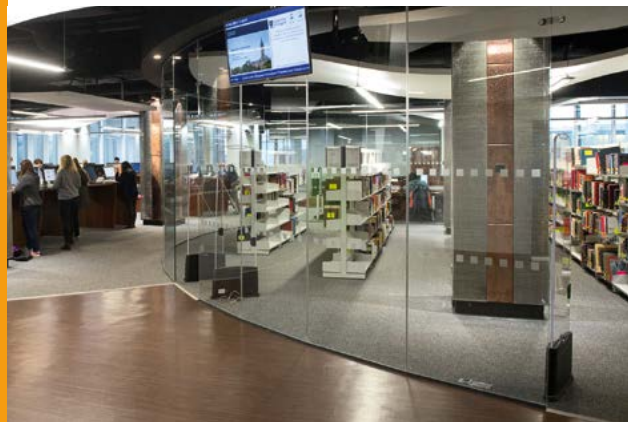
Helen Durrnell (right) with Depute Directors Lesley Richmond (left) and Susan Ashworth (centre)

In High Demand

After refurbishment of one half of level 3 in 2009, the remaining part was completed during summer 2014, with a range of different study spaces and the introduction of a new High Demand Collection, focussed on 24 hour and 4 hour loan materials. The area provides a continuation of the “social learning” environment already established in the café area. Consistently busy since it opened, the area is very popular with students, with excellent feedback on the Library’s social media sites.

A key feature is the High Demand Collection encased within an attractive glass box in the centre of the area. Comprising approximately 17,000, 4 and 24 hour loan books in high demand for coursework and reading lists, this collection replaces the Short Loan area.

Three more new spaces have also been created – the LearnLab is a computer and teaching lab; the TalkLab is a meeting room which can be used for small conferences, talks and presentations and the LoungeLab is a comfortable seating area overlooking the Fraser Building and MacMillan Reading Room.



Keep the customers satisfied

Social media has become one of our main means of communicating and engaging with students. With 3781 followers on Twitter, 7000 “likes” on Facebook, we set up an Instagram account – the first University Library in the UK to do so. 1458 followers have signed up since March 2014, with many students contributing images taken on campus.

Archive Services ended 2013/14 with 2,151 followers on Twitter with the number of tweets increasing by 65%. Use of Flickr has increased significantly with a huge increase in the number of images uploaded. We have used it to support projects, anniversaries and collections.

The Library is an active member of the Scotland-wide Customer Services Practitioners Group which organised a conference “Do you know the impact of your service?”. This event, which included a session on Readinglists@Glasgow, was very well received, with delegates and speakers attending from all over the UK.

A new service to all Library users has received very positive feedback – staff-led Library tours are available three times a week including an evening tour. Bookings are managed through Eventbrite and advertised through the Library website and social media.

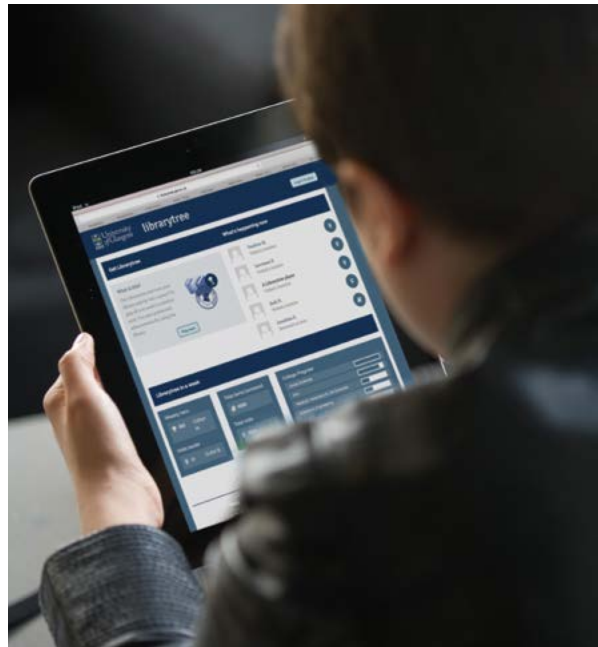
Graduate trainees from Archive Services worked on a pilot to experiment with the use of HistoryPin as an additional social media channel. HistoryPin enables you to share images and using the location and date of each image, to “pin” it to Google Maps. The pilot project by Kimberley Beasley used images from the William Fulton Jackson photographic collection which documents the life and travels of an Edinburgh Edwardian family. As well as containing thousands of photos they are also captioned, giving information about the date, location and identities of people within the image. This made the images perfect to be linked to our twitter account to tweet images 100 years to the day that they were taken by Jackson. A second tour created by Callum Morrison has shared images of Clyde shipyards and ships, pinned to their locations along the Clyde.

As well as our own social media activity we have actively supported the University Communications team with material from our archive collections for their social media platforms. In particular we have provided images for the regular ‘Throwback Thursday’ on their Instagram account. This has proved very popular with followers and images regularly receiving hundreds of “likes” by an audience which is primarily current students and recent graduates.



librarytree

The librarytree project, launched in autumn 2014, aims to increase engagement with Library users by harnessing some of the techniques from gaming, rewarding elements of library behaviour and making interactions with the Library more fun. By logging on to the librarytree website, students can gain points & badges for using the Library building, borrowing & returning books, accessing an e-resource or sharing a review of something they've read with friends and classmates. Information can be shared via computer or mobile app. This is a joint project with University of Manchester Libraries, working together with developers Running in the Halls, to deliver bespoke versions of the software at each institution. The project group plans to investigate whether early engagement with librarytree can have a positive impact on Library use throughout students' academic courses.





Research Excellence Framework

The Library had full responsibility for delivering the publications part of the University's REF submission. The three months before the submission date at the end of November 2013 were extremely busy with many changes made close to the deadline. We co-ordinated the completion, review and upload of records of nearly 4000 outputs for submission to the REF. The Photographic Unit scanned thousands of pages of material, including over 300 book chapters (and other material) which were uploaded to the REF2014 submission system.

The support and management of publications for the REF submission was the main focus for the Enlighten team this year. The team worked closely with the Colleges, the Research, Strategy & Innovation Office and research colleagues across the University to deliver this key REF element.

Enlighten is the University of Glasgow's institutional repository service for research publications.

Open Access

The University Library manages, curates and disseminates records of the University's research output. This comprehensive support service for Open Access to publications and research output consists of a range of presentations, meetings and training to raise the visibility of requirements and support available.

E-book usage

E-book numbers continue to increase with a 4% rise in purchases from the previous year. Students and staff are making good use of the titles available, with a very encouraging 70% rise in use compared to 2012-13.

Multimedia

A new Multimedia group has been set up, committed to moving towards streamed content for the Library. The group has made a good start, with a new subscription to BoB (Box of Broadcasts) a shared online off-air TV and radio recording service with over 1 million programmes, for UK Higher and Further education institutions.

From the late Professor David Walker

The collection of the late Professor David Walker, a major figure in Scottish legal education and Regius Professor of Law at the University, was donated to the Library. This is a very large and significant collection of predominantly Scots law texts which will enhance our collections in this area considerably.

Librarian from China

For six months, the Library hosted Bin Li, a librarian from the University of Electronic Science and Technology of China. After becoming familiar with the building and meeting Library staff, Bin spent time in different areas looking at all aspects of the Library from acquisitions & access to student orientation.





Volunteer Maddie speaks to Dr Tony Pollard about her research on individuals on the WWI Roll of Honour



ARCHIVE DISCOVERED

"Our discovery of the illustrations from the *Zine of One's Own* project, hidden amongst other papers, was one of those truly eureka moments that is only possible when working in archives. As crisp and as clear as the day they were created, the images of young people at work and leisure revealed Paul Appleby's rich legacy of immediately detailed social science research. The life and work of this once forgotten social researcher, a true pioneer and innovator, at once became available for all to explore and celebrate."

Dr. John Goodwin, University of Leicester

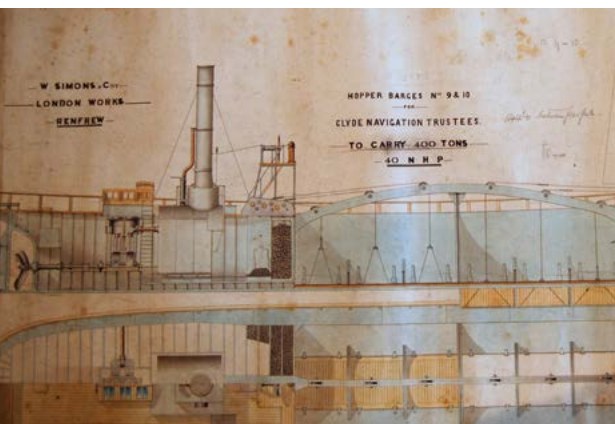
Glasgow University's Great War

Having been planned in 2012-13, Archive Services' partnership with the Centre for Battlefield Archaeology and the History subject area was formally established with a Chancellor's Fund grant to Dr Tony Pollard in October for *Glasgow University's Great War: A Centenary Project*. This has two main aims of enhancing the Roll of Honour website and building an education programme to engage the widest possible audience in understanding the impact of that conflict on our community. The archive collections will feature heavily as we tell the stories of the 761 who died and the 4500 who served. This Project has also been supported by the Friends of Glasgow University Library who have awarded a grant for digitisation and for students to create online exhibitions to showcase the wealth of resources the Library holds for the study of the First World War.

Explore your Archives campaign

As part of the UK wide Archives and Records Association's *Explore Your Archive campaign*, we asked students, academics, researchers and public users of our archive collections to share with us discoveries and favourite stories from the collections to inspire you to explore our archive. We produced 10 posters which were tweeted along with items from our collections.

Profile plan of ship no. 155 *Africa*, 1869



Keeping Archive Services afloat

Archive Services were awarded £10,900 by the National Manuscripts Collections Trust towards the preservation and conservation of 19th century plans of ships constructed by William Simons & Co Ltd.

The project will conserve the four construction plans which were used to build ship numbers 117 and 119, the paddle steamer *Will o' the Wisp* and screw steamer *Julia*. These plans, dating from construction in 1863, provide key information on the design of the vessels. They are the only remaining source of information on the construction of these ships.

The collection consists of 680 plans of 156 vessels built from 1820 until 1926. As such, it contains some of the earliest ship plans held, with this collection providing over 85% of the total of pre-1870 ship plans held by the University. The national importance of these plans draws from the significance of the blockade running to the Clydeside economy throughout the American Civil War. This project will ensure the ongoing preservation of these plans, allowing researchers to access information on the full extent of the Clyde's significance in this important period of Scottish shipbuilding history.

Elzbieta Gorska-Wiklo (Preservation Manager) working on Simons ship plans in the Conservation Studio





Glasgow Incunabula Project

This project began in 2009 and is now entering its final stages, with the incunabula flickr set containing around **3364** images. Many more books with interesting provenances have been unearthed; as well as several more books now identified as having belonged to monasteries, the inscription of Elizabeth Howard, Duchess of Norfolk (1497-1588), was found in one book, while investigation into a coat of arms in another volume resulted in the conclusion that it probably belonged to the Florentine statesman and friend of Machiavelli, Francesco Guicciardini (1483-1540).

Generously supported by the Friends of Glasgow University, the exhibition **Ingenious Impressions**, an exhibition catalogue and several exhibition related talks and events are currently in planning, while a launch of the project and related symposium will target a more research oriented audience.

Stirling Maxwell Collection

A unique opportunity to develop and enhance the Stirling Maxwell collection opened up in July 2014, when Christies announced the sale of the Yates, Thompson and Bright library. This was an auction of an extraordinary private library incorporating everything from choice medieval manuscripts to important early modern imprints and - most importantly for us - a large collection of exceptional emblem books.

We were able to secure no less than nine lots, purchasing two rare Alciatos, and the 1564 *Délie* by Maurice Scève. One of the best known of all emblem books and seldom available for sale, this had been acknowledged as the most significant gap in our collection. Special Collections will be working closely with research colleagues in the Centre for Emblem Studies to publicise this fascinating and strengthened collection.

Exploiting the collections

In March, Special Collections held a highly successful open evening for University staff and students. Special Collections staff worked with colleagues in Archive Services to highlight ideas for research projects based on our collections. Aiming to spark interest in underused collections and new acquisitions, a wide range of books, manuscripts and archival material was displayed, including mathematical books from the Simson collection, newly acquired and uncatalogued medieval and early modern manuscript volumes as well as newly acquired modern literary and art archives, including the papers of Louise Annand, Bet Low and Philip Hobsbaum.

It's a fact

- The number of visits to the Library reached almost 1.9m – an increase of 44% in the past 5 years.
- Library Services answered more than 55,000 enquiries - 5,000 more than the previous year
- Self-return machines accounted for 31% of the total items checked in since August 2013
- Since August 2013, there was a 40% increase in traffic to the Library website
- librarytree – we now have over 1500 players
- Online Course Materials Service – a 21% increase in courses provided with digitised material
- ReadingLists@glasgow – 213 live lists by summer 2014
- Open Access – 526 Article Processing Charges were handled by Acquisitions & Access staff
- Enlighten, our institutional repository, achieved over 1 million downloads
- The Theses Service had 1.5m downloads

