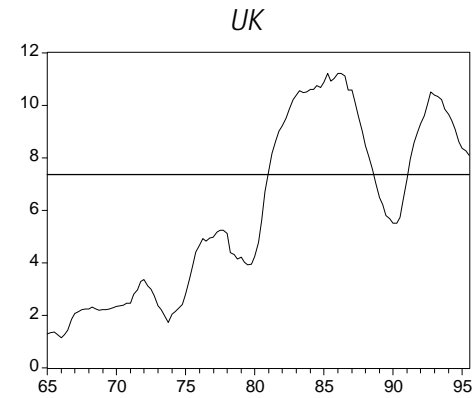
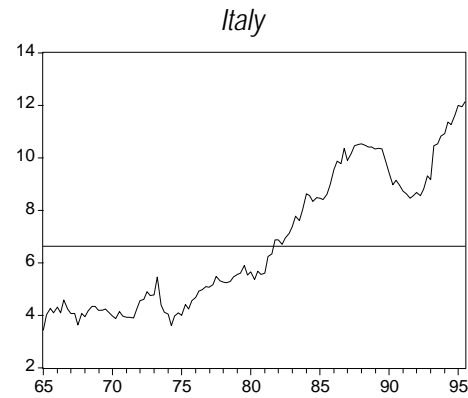
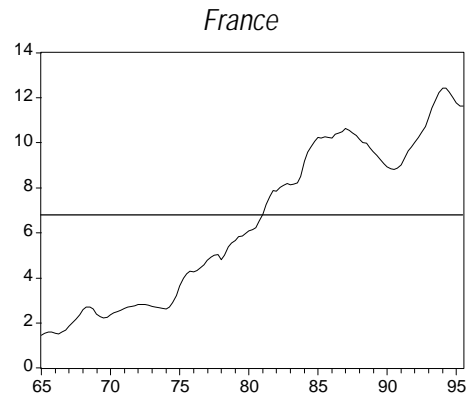
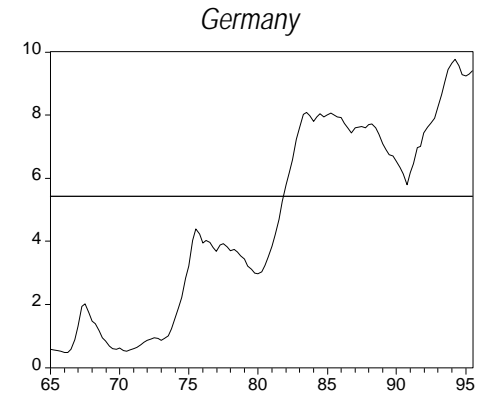
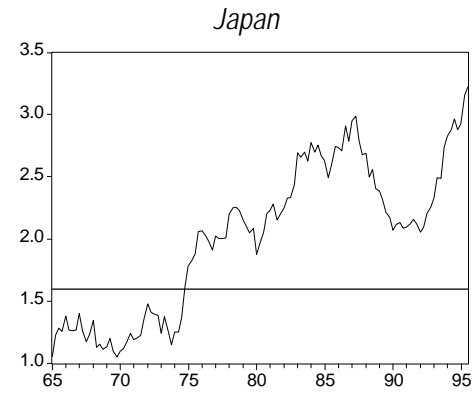
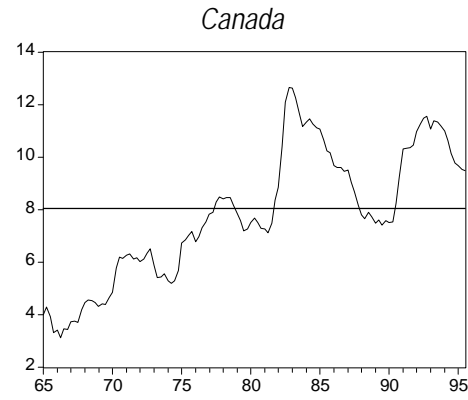
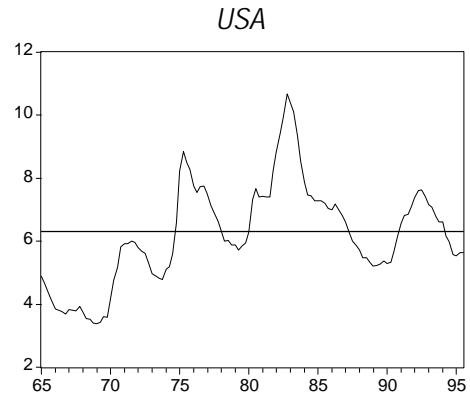


CHARTS

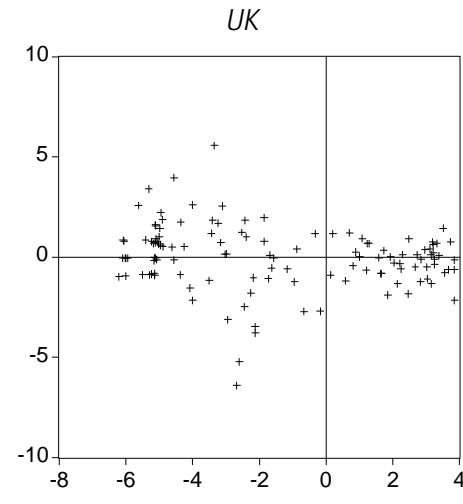
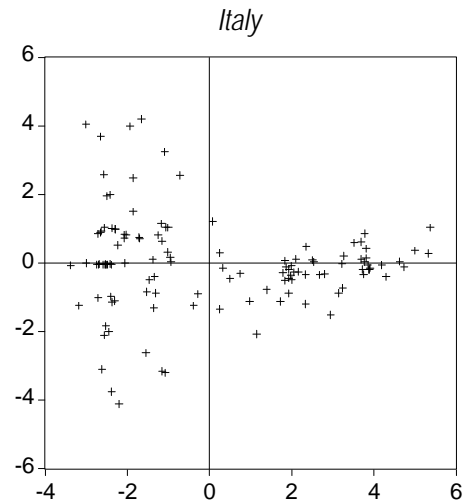
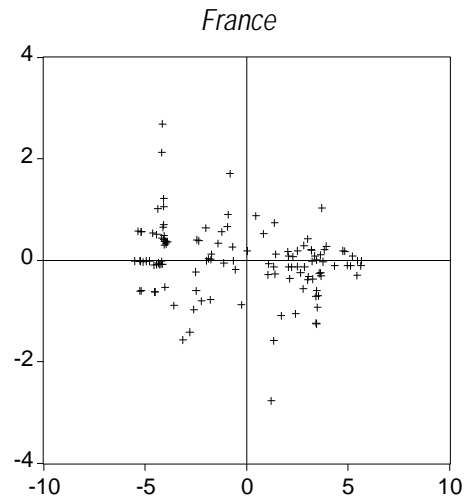
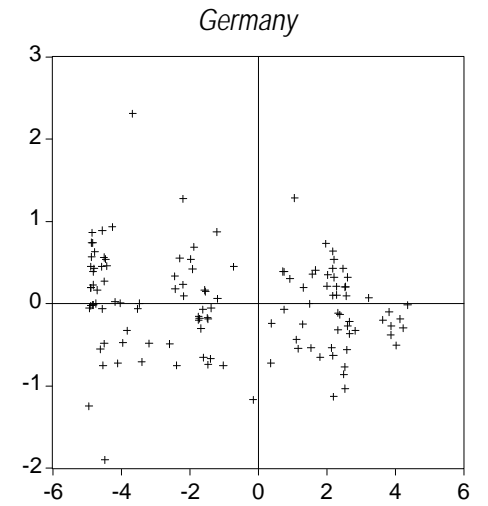
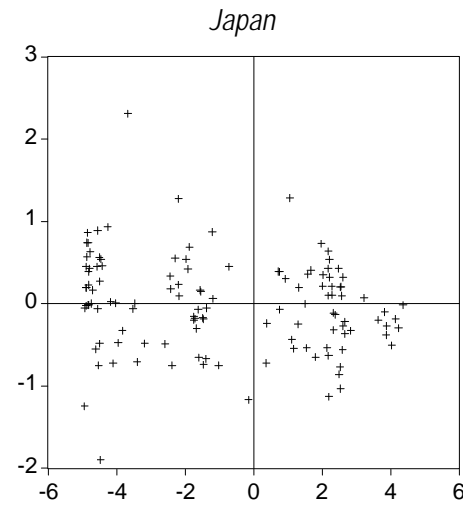
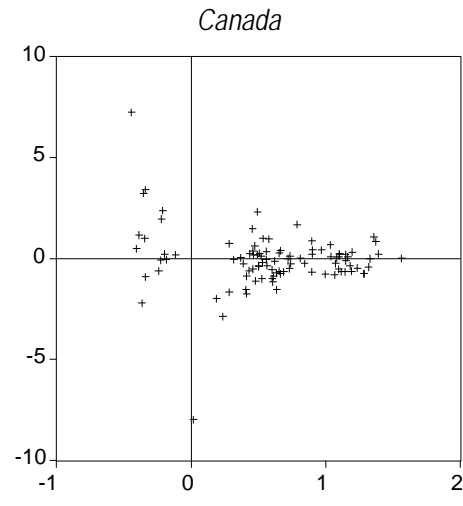
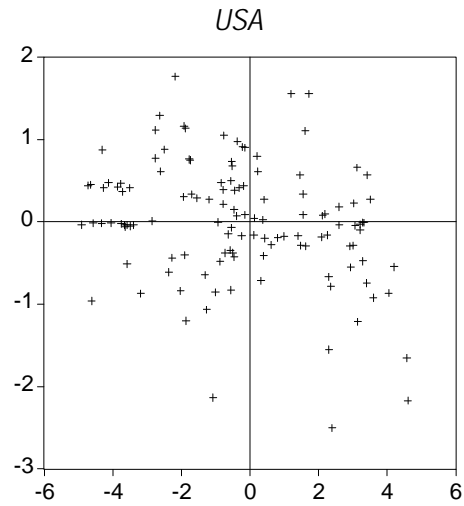
CONSTANT NAIRU SPECIFICATION

CHART 1: UNEMPLOYMENT AND ESTIMATED NAIRU.



CONSTANT NAIRU SPECIFICATION

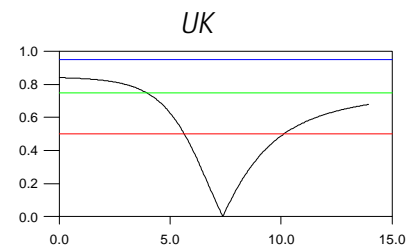
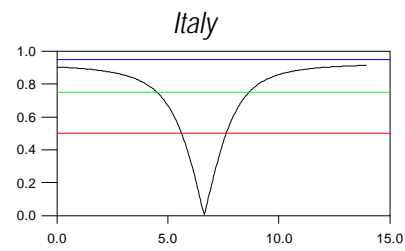
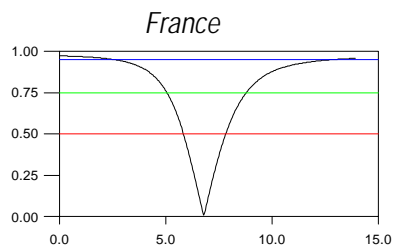
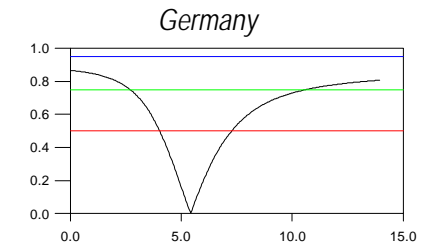
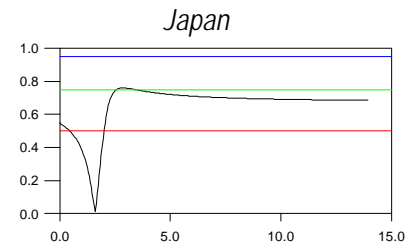
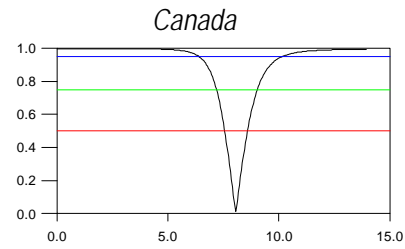
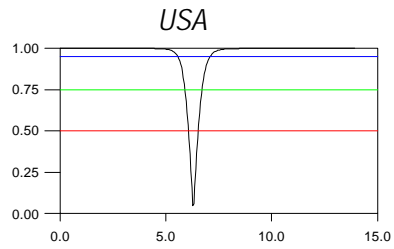
CHART 2: $\Delta^2 P_t$ against $U_{t-1} - U^*$



CONSTANT NAIRU SPECIFICATION

CHART 3: F-TEST REJECTION PROBABILITY

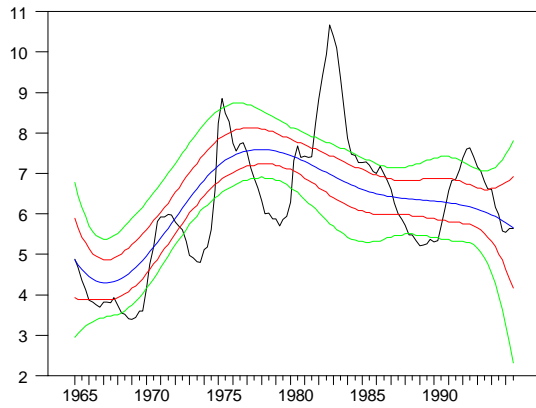
In each case the value of the NAIRU under the null hypothesis is indicated on the horizontal axis and the rejection probability is shown on the vertical axis.



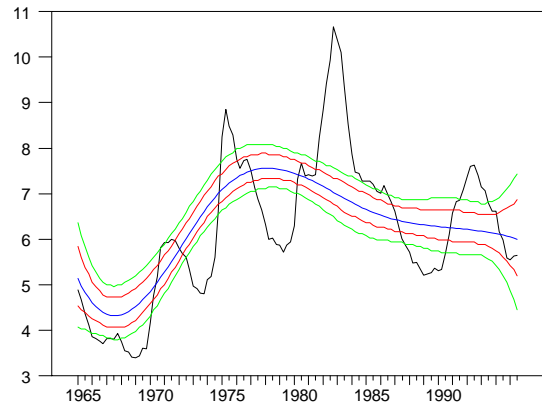
2 KNOT CUBIC SPLINE AND PREFERRED SPECIFICATIONS

CHART 4: UNEMPLOYMENT AND THE ESTIMATED NAIRU WITH CONFIDENCE INTERVALS

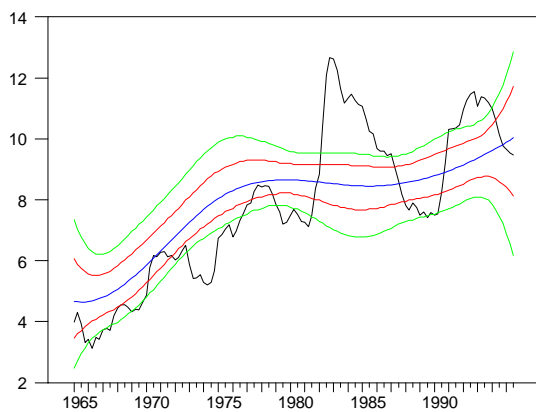
*USA 2 knot spline
(Staiger, Stock & Watson specification)*



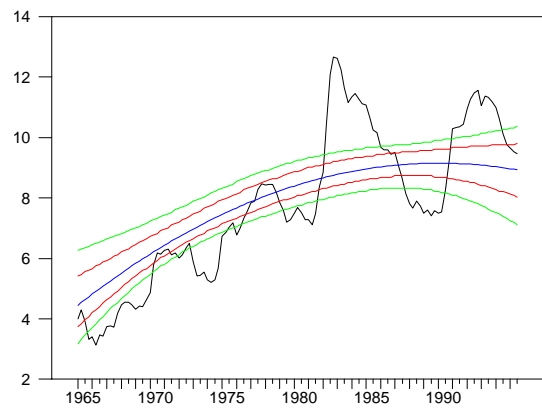
*USA 2 knot spline
(Preferred specification)*



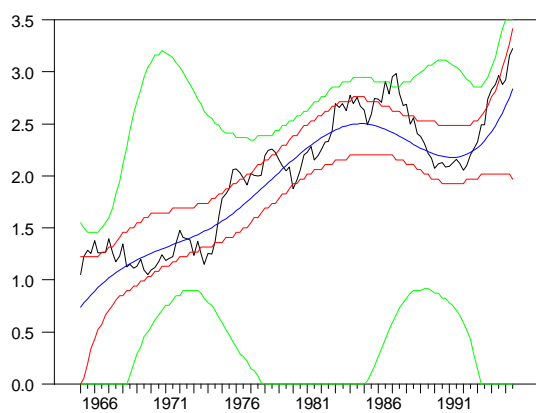
Canada 2 knot spline



*Canada preferred
(Quadratic)*



Japan 2 knot spline



*Japan preferred
(Quadratic)*

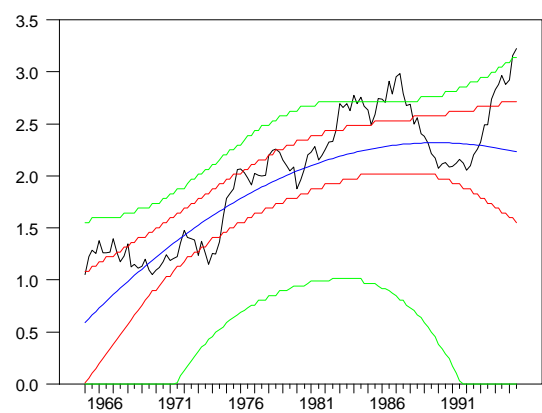
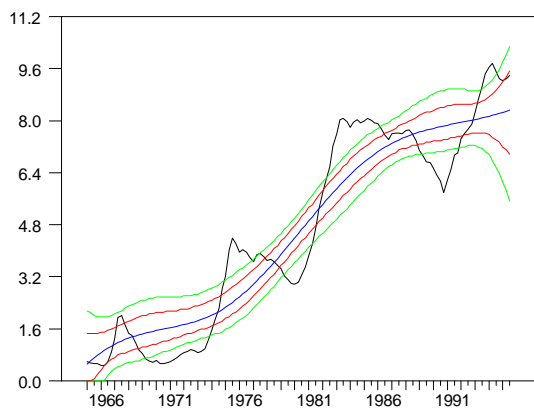
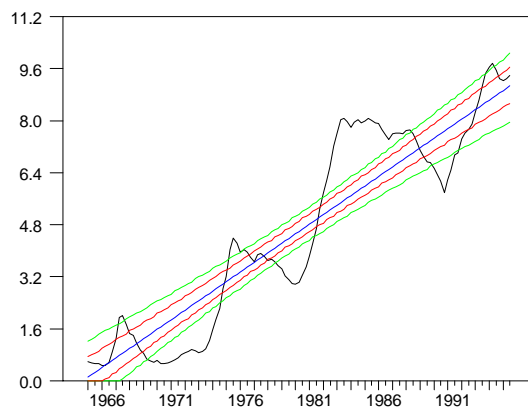


CHART 4: CONTINUED

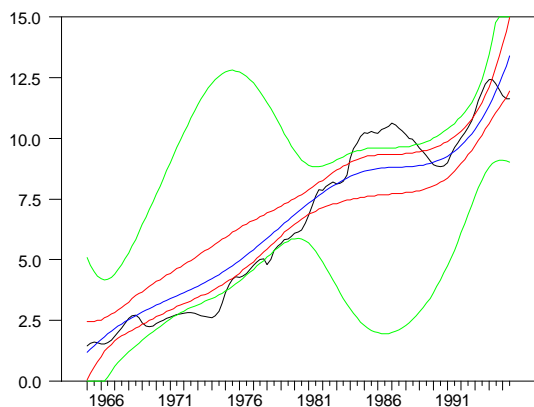
Germany 2 knot spline



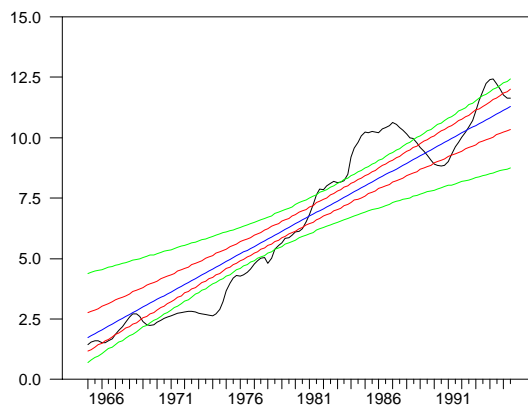
Germany preferred (trend)



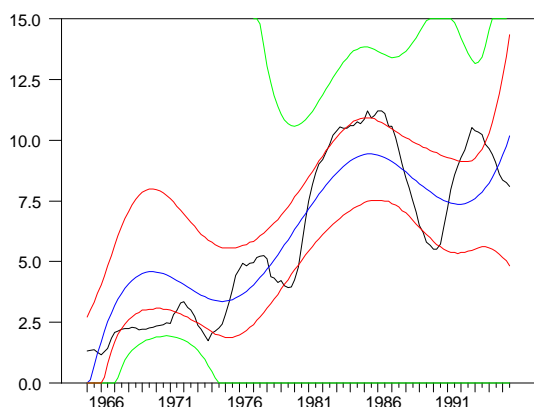
France 2 knot spline



France preferred (trend)



United Kingdom 2 knot spline



United Kingdom preferred (mean shift)

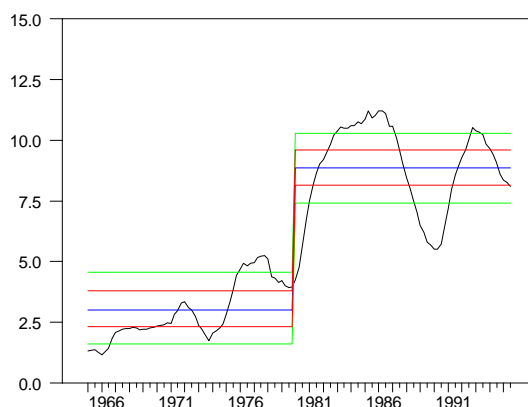
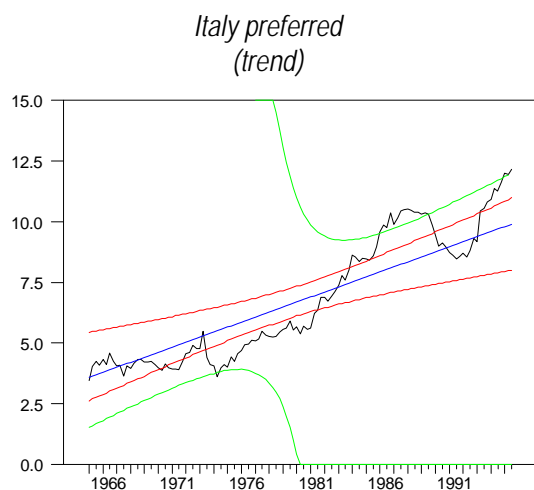


CHART 4: CONTINUED



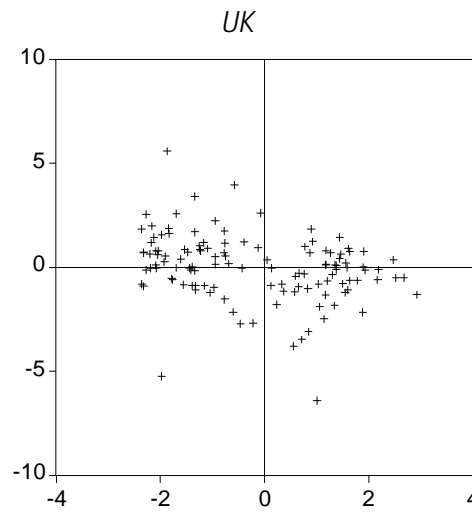
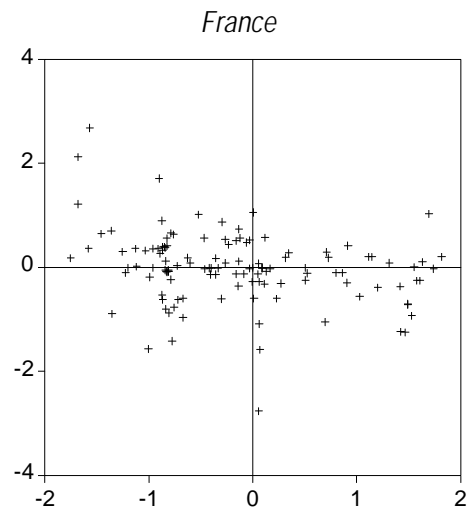
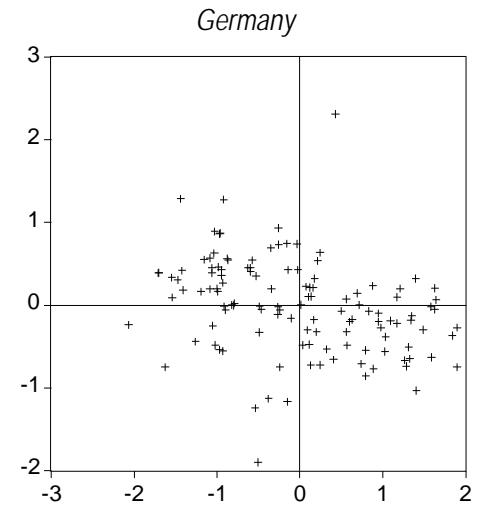
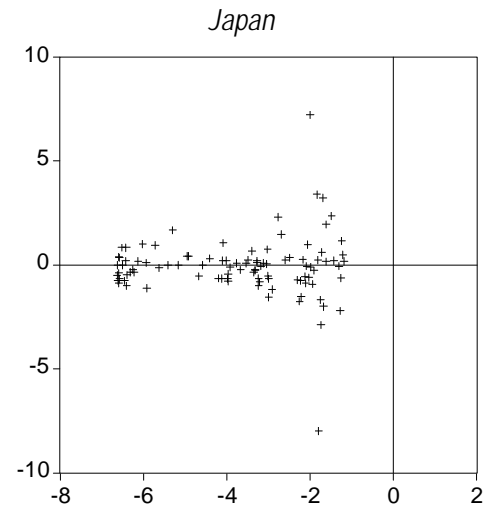
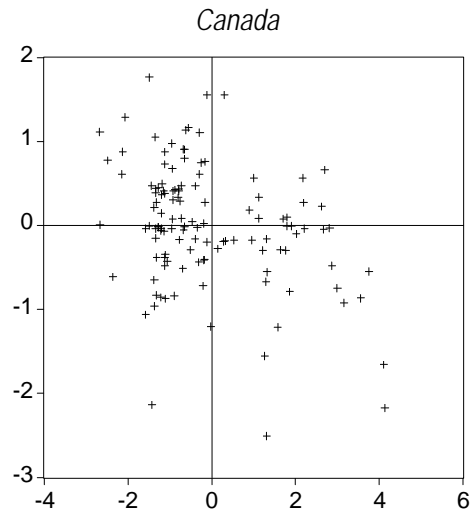
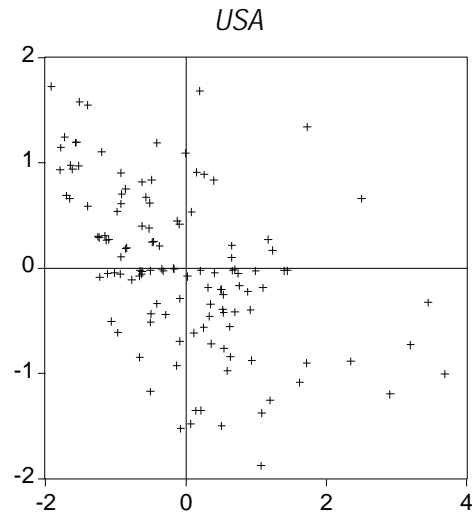
Notes

(i) The "jagged" line shows the actual unemployment rate. The central smooth line shows the estimated NAIU, the inner two smooth lines the 75% confidence interval and the outer two smooth lines the 95% confidence interval. The $x\%$ confidence interval gives the maximum and minimum values of the NAIU which cannot be rejected at the $x\%$ level of significance.

(ii) A two knot spline is not given for Italy since an adequate equation could not be estimated (see text for further explanation).

2 KNOT CUBIC SPLINE SPECIFICATION

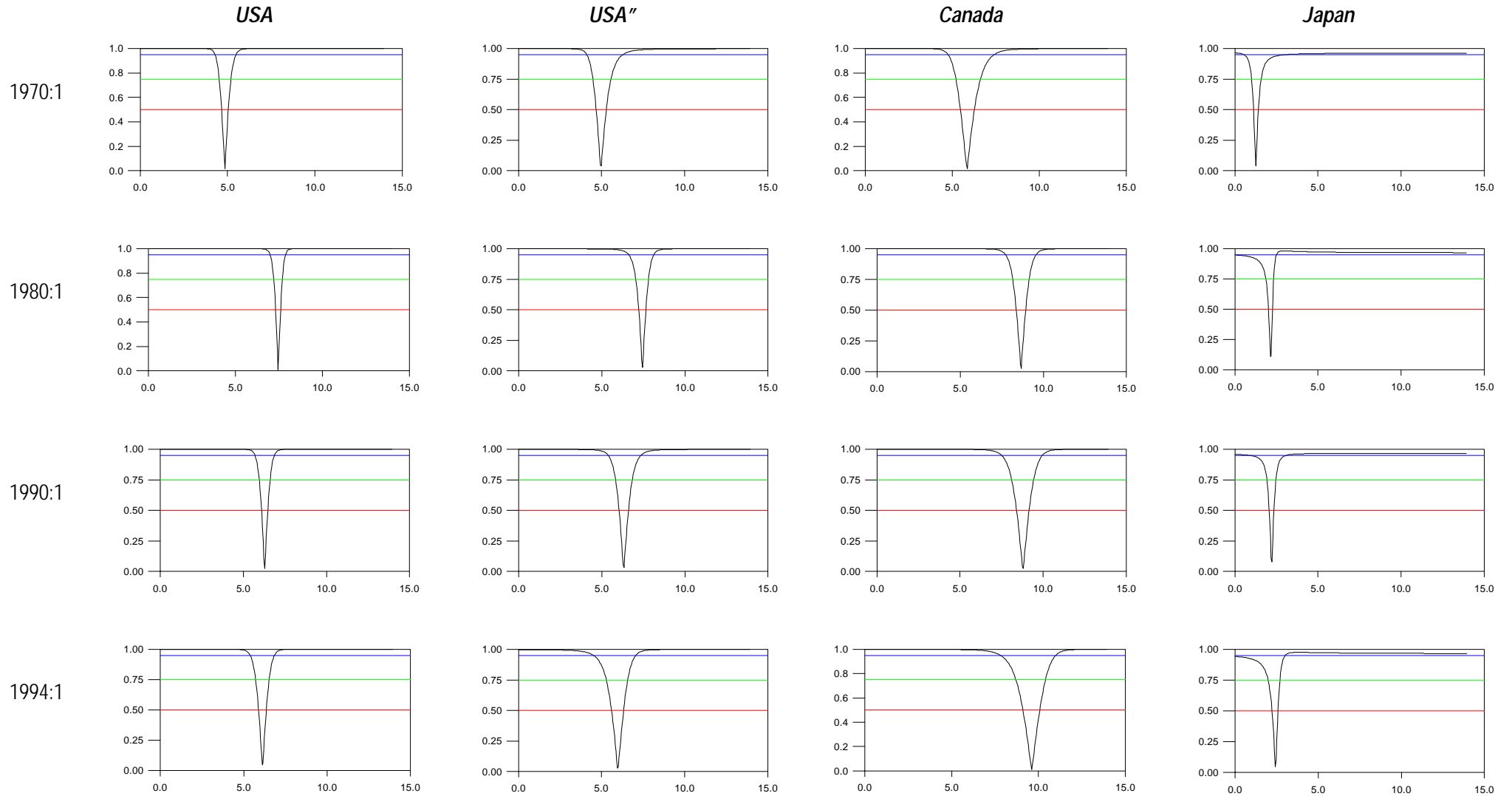
CHART 5: $\Delta^2 P_t$ against $U_{t-1}-U_t^*$



2 KNOT CUBIC SPLINE SPECIFICATION

CHART 6: F-TEST REJECTION PROBABILITIES SELECTED DATES

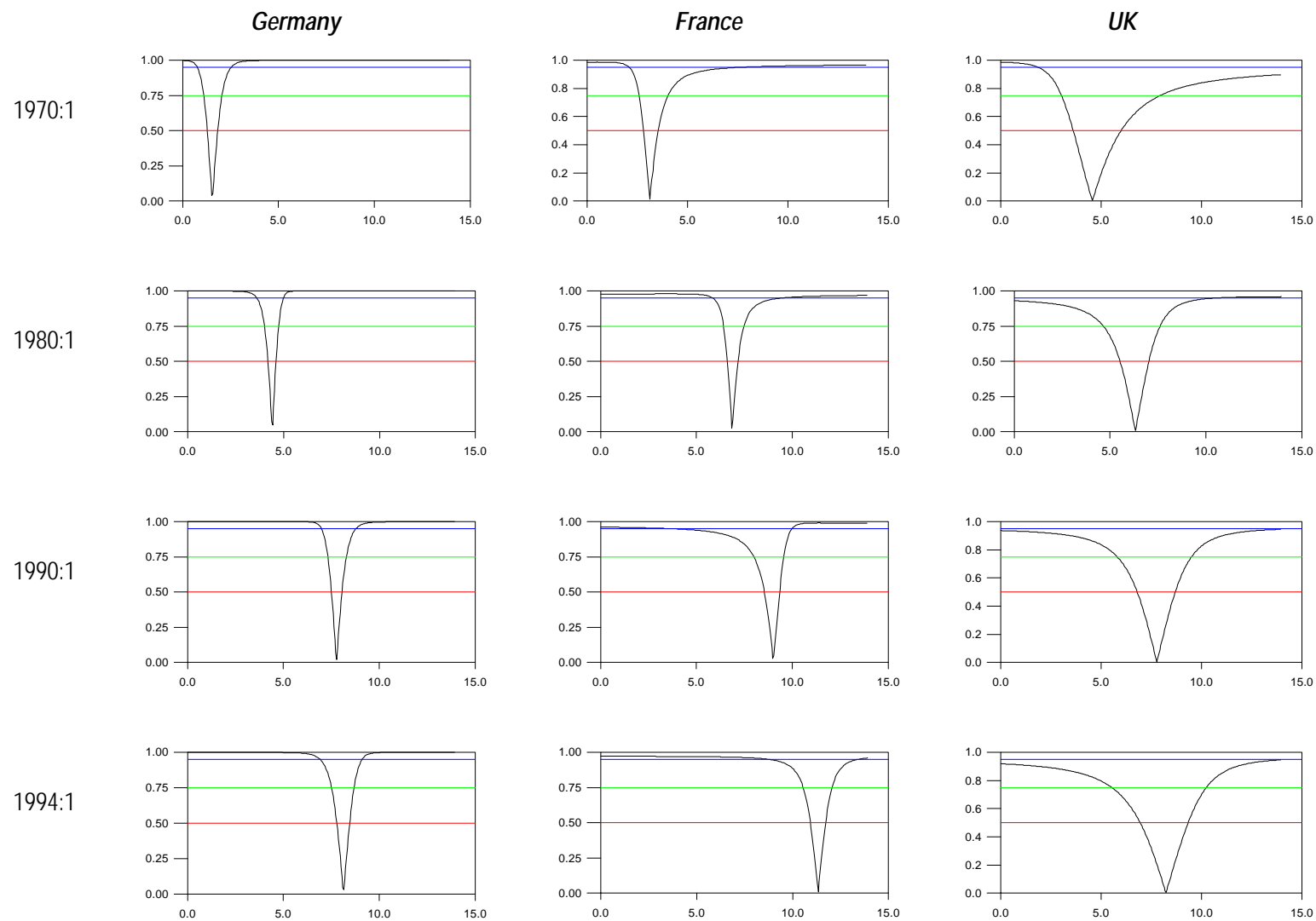
In each case the value of the NAIKU under the null hypothesis is indicated on the horizontal axis and the rejection probability is shown on the vertical axis.



2 KNOT CUBIC SPLINE PREFERRED SPECIFICATION

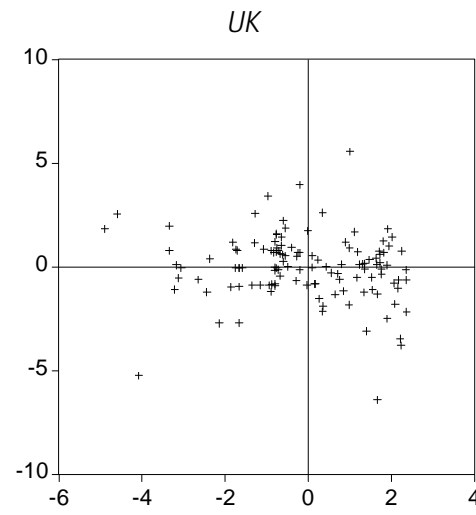
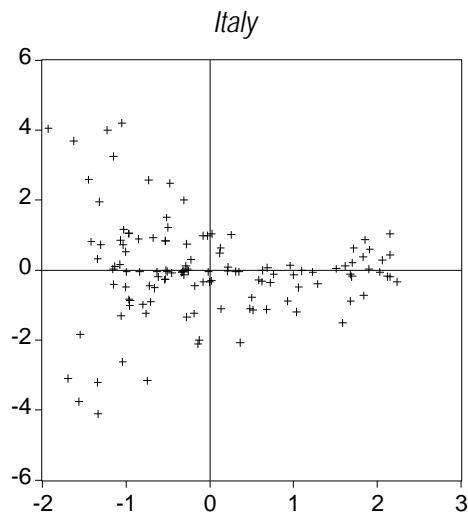
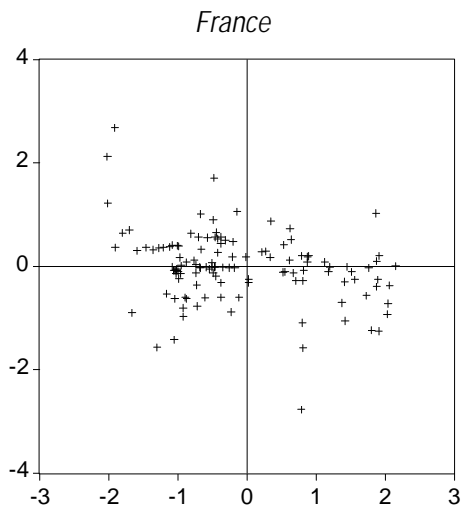
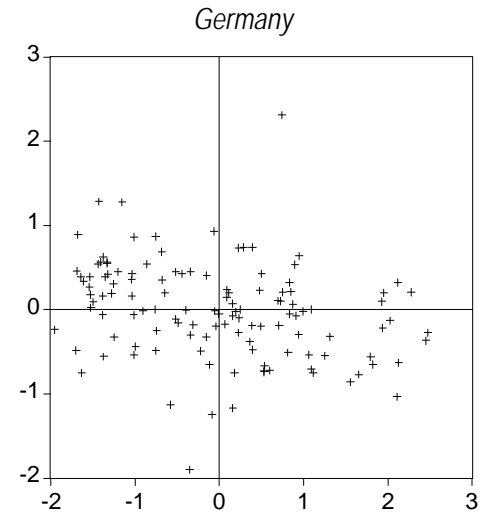
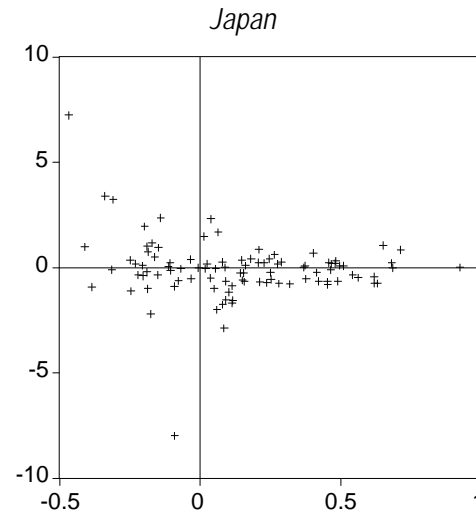
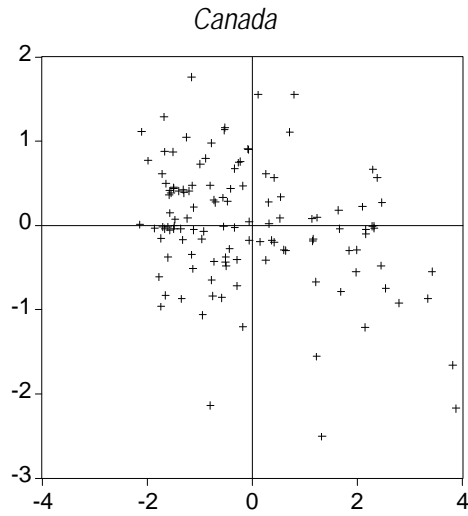
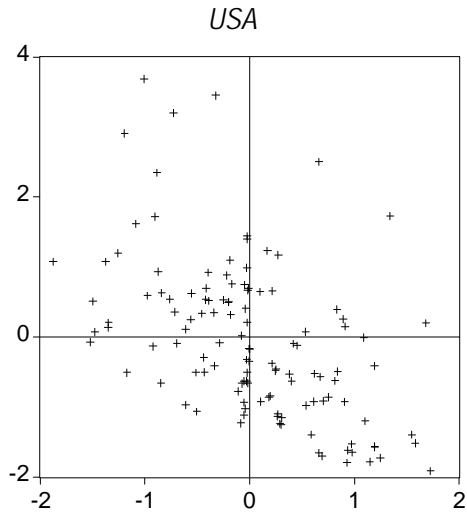
CHART 6: F-TEST REJECTION PROBABILITIES SELECTED DATES (continued)

In each case the value of the NAIRU under the null hypothesis is indicated on the horizontal axis and the rejection probability is shown on the vertical axis.



PREFERRED SPECIFICATIONS

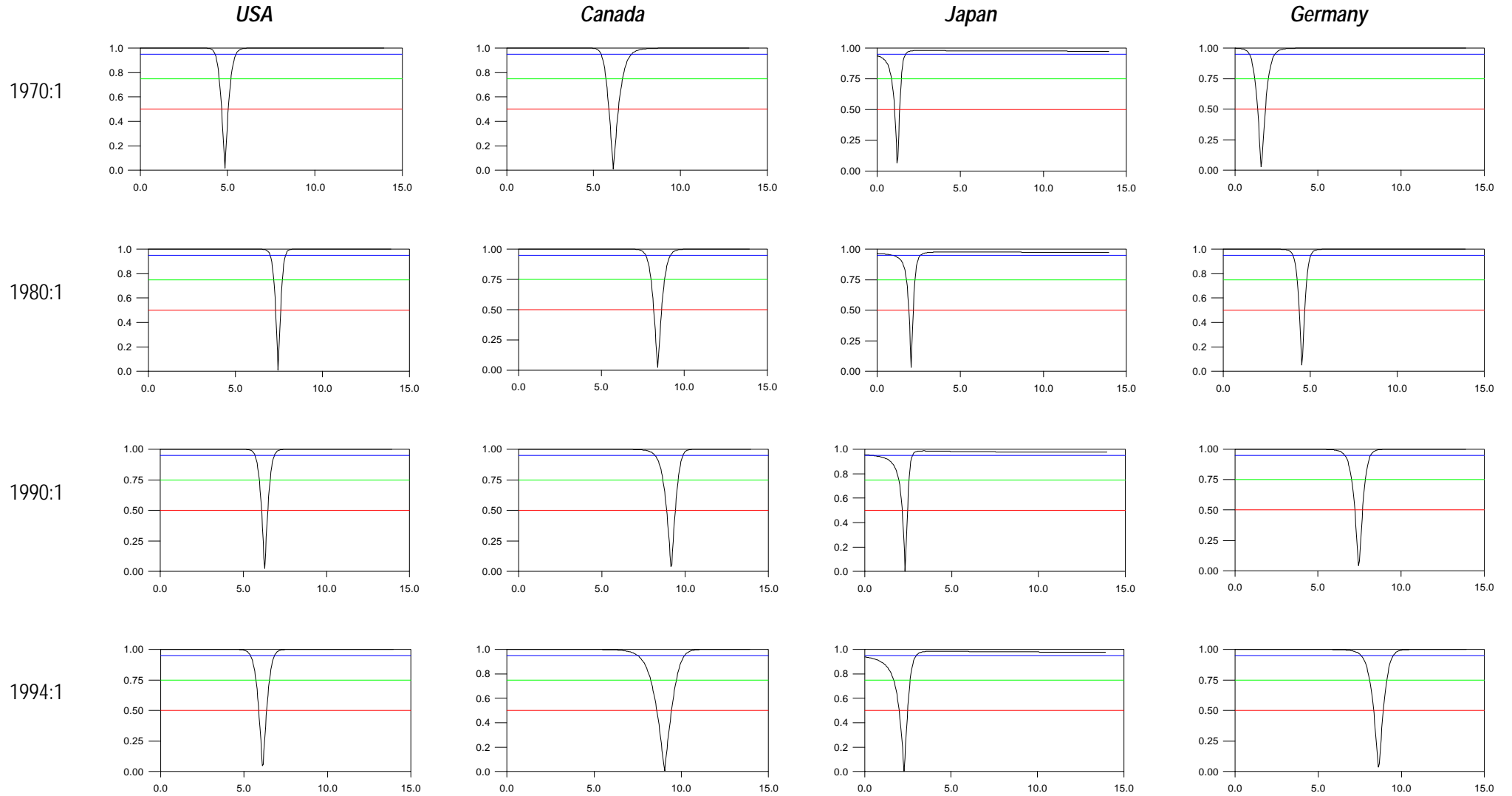
CHART 7: $\Delta^2 P_t$ against $U_{t-1} - U_t^*$



PREFERRED SPECIFICATIONS

CHART 8: F-TEST REJECTION PROBABILITIES SELECTED DATES

In each case the value of the NAIU under the null hypothesis is indicated on the horizontal axis and the rejection probability is shown on the vertical axis.



PREFERRED SPECIFICATIONS

CHART 8 (CONTINUED): F-TEST REJECTION PROBABILITIES SELECTED DATES

In each case the value of the NAIRU under the null hypothesis is indicated on the horizontal axis and the rejection probability is shown on the vertical axis.

