



Forteviot, Perthshire:
Excavations at the
Entrance Avenue of the
Neolithic Palisaded
Enclosure 2007

Interim Report and
Data Structure Report

by
Gordon Noble and
Kenneth Brophy

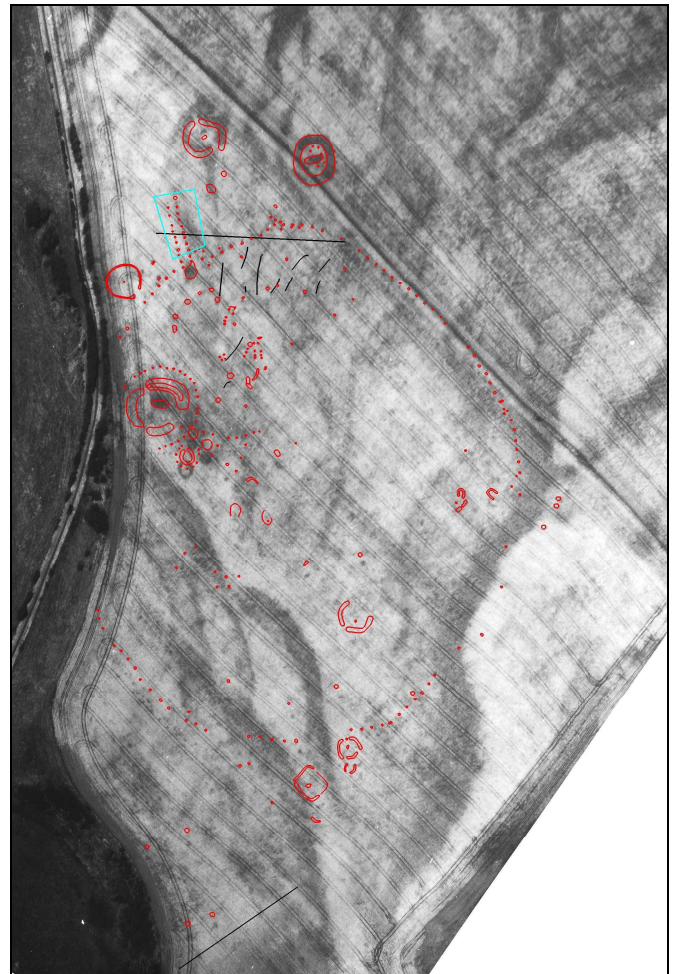


Table of Contents

Summary	2
Introduction	2
Methodology and Objectives	2
Findings	3
Silted Palaeochannel	3
Putative Pre-Avenue Setting	3
The Avenue Posts	5
Internal Avenue Features	12
Features Outwith the Avenue	13
Tree throws	13
Pits outwith the avenue	14
Possible timber setting	16
Discussion	17
Human Remains	19
Internal Avenue Features	19
Tree Throws	20
Pit Features Around Avenue	20
Finds	21
Open Day	21
Conclusions	21
References	21
Appendices	22
i) Contexts	22
ii) Small Finds	27
iii) Drawings	28
iv) Samples	30
v) Photos	32

Summary

Excavation was undertaken on the site of a possible Late Neolithic palisaded enclosure to the S of Forteviot village between 6th and 26th August 2007 as part of the Strathearn Environs and Royal Forteviot (SERF) Project and the University of Glasgow Field School. This site was initially identified as cropmarks through aerial photography. The 2007 season of excavation targeted the entrance avenue of the palisaded enclosure, revealing 16 of the 18 postholes of the avenue identified from cropmarks (Figure 1). Various other features, such as tree throws, pits and further postholes were found within and surrounding the avenue.

Introduction

One of the key aims of SERF is to sample the remarkable range of cropmark sites situated to the S of Forteviot village. The 2007 excavations focussed on the largest recorded coherent cropmark site, a pit-defined enclosure some 265m across, enclosing an area equivalent to 7 or 8 football pitches (NGR NO 0533 1688, NMRS NO01NE 28) (Figure 1). The boundary as seen from the air consists of a wobbly and intermittent series of over 130 pits defining an irregular circle; a double line of pits at the northern end appear to mark an entrance 'avenue' into the enclosure. The W side of the enclosure is missing; this has either been lost to erosion, or the escarpment overlooking the Water of May to the W marked a 'natural' boundary to the monument.

This remarkable monument was first identified from the air by St Joseph in 1976. He identified at the same time a series of ancillary or perhaps related cropmark sites including possible henge monuments and timber circles (St Joseph 1976), many of which are situated within the pit-defined enclosure. St Joseph identified this enclosure as potentially Neolithic, and indeed it does seem superficially to belong to a class of monument that has become known as a 'palisaded enclosure', Later Neolithic timber monuments that have been recorded as cropmarks across northern and central Europe (Gibson 2002, Varndell & Topping 2002). Three similar sites have been recorded as cropmarks in Scotland and two have already been partially excavated: Meldon Bridge, Scottish Borders (Speak & Burgess 1999) and at Dunragit, Dumfries & Galloway (Thomas 2001, 138-40). Both of these sites were indeed huge Later Neolithic enclosures defined by hundreds of large oak posts and we will draw comparisons from these excavations in this report. Interestingly, the fourth such enclosure, Leadketty, is situated some 3km W of Forteviot, N of the village of Dunning.

The excavation took place between August 6th and the 26th, 2007 and was undertaken by a team of undergraduate and postgraduate students from the University of Glasgow and local volunteers. The excavation formed part of a wider season of fieldwork carried out for the SERF project (see www.gla.ac.uk/departments/archaeology/research/projects/serf), and was part of the University of Glasgow Department of Archaeology Field School.

Methodology and Objectives

A rectangular trench approximately 37.5m x 25m was located over the cropmark of the avenue (Figure 1). From aerial photographs it appears that the avenue can be identified as consisting of eighteen pits, nine on each side. The trench encompassed almost the entire length of the avenue uncovering sixteen of the eighteen pits, with the two closest to the line of the palisaded enclosure remaining outside of the trench for future investigation. This trench was also positioned in order to investigate a significant area surrounding the avenue. Once the topsoil was stripped by a mechanical excavator, the trench was then cleaned using hoes and each context

hand-excavated by trowel. Of the 16 avenue pits uncovered 75% (twelve) were excavated, three fully; the remainder were recorded by half-section. A sample of other potentially archaeologically significant features recorded within and surrounding the avenue was also excavated.

The objectives of this season of excavation were to establish the:

- nature of the avenue;
- date and phasing (if any) of the avenue;
- nature of the subsoil;
- level of truncation of archaeological features;
- potential of archaeological features being present which were not visible as cropmarks.

This report (which incorporates the Data Structure Report) will briefly summarise the findings of the excavation and our interim conclusions, detail the recorded archival material, and set out a strategy for post-excavation analysis. Throughout the report, the following conventions have been used to classify contexts:

	= Fill
	= Possible postpipe
	= Cut

Fill numbers are listed in (parenthesis) and cut numbers in [square brackets].

Findings

Silted Palaeochannel

The western side of the avenue was identified at an early stage of the excavation. The dark silty loam fills of the avenue post-holes (see below) were easily visible as they cut the orange-brown gravel subsoil (003). The other side of the avenue was much harder to identify. It quickly became apparent that this was because an uneven and wide band of silty material (002) ran through the centre of the trench, running from NNW-SSE. The postholes of the eastern side of the avenue were located with some difficulty, not because the silt overlay them, but because the upper fills of these postholes were almost identical to the silt deposits they were dug into. The silt band is probably a Late Glacial palaeochannel (the site of a relic dried-up watercourse related to the retreat of the glaciers at the end of the last Ice Age). Careful cleaning and partial removal of the upper 0.1-0.2m of the silt helped reveal the eastern postholes of the avenue in plan. In retrospect the palaeochannel is visible in aerial photographs of the site.

Putative Pre-avenue Setting

Three of the large postholes on the W side of the avenue [031, 037, 041] were each paired with a much smaller and potentially earlier pit or posthole [033, 039, 109], in each case located immediately to the N (Table 1). The morphology and single fill of these features leave us unable to demonstrate whether they held a post or not; no post pipes were identified.

At Meldon Bridge, and at least one of the palisade circuits at Dunragit palisaded enclosure, smaller features between main postholes were interpreted as being indicative of some form of fencing or screen, allowing the formation of a solid boundary (eg. Speak & Burgess 1999, 15ff). However, as these features were only found in association with one side of the avenue at Forteviot, and one of the features

is beyond the end of the avenue, this interpretation seems unlikely. No evidence was found that these features necessarily supported a post, although we cannot rule this out, and must also bear in mind possible plough truncation of similar features. It is unclear if these features are even contemporary with the main avenue postholes; no stratigraphic relationship was established between them.

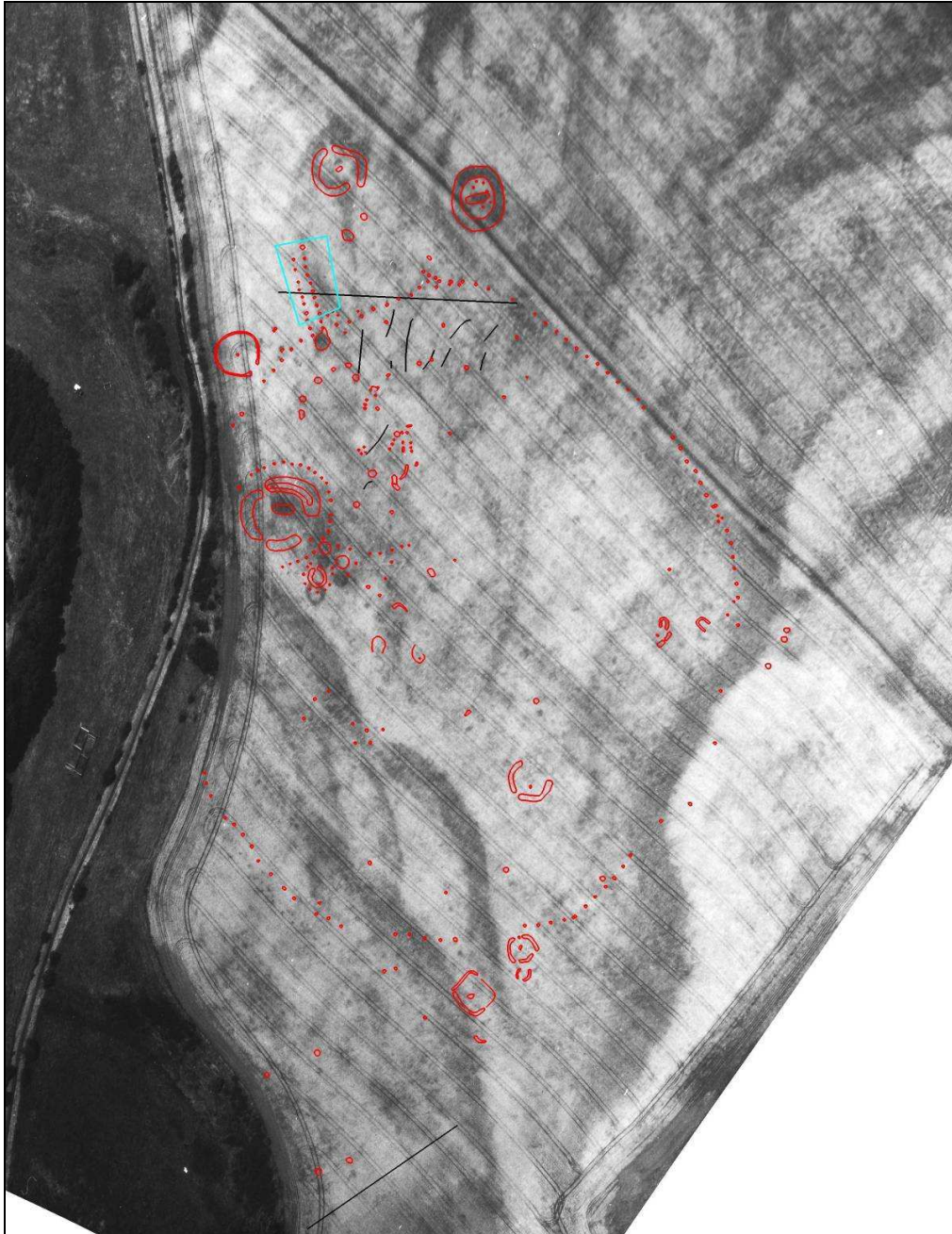


Figure 1: A transcription and aerial photograph of the cropmarks at Forteviot. The red dots mark the former position of timber posts or pits. The largest group of red dots is the Neolithic timber enclosure, which measures around 265m N-S (N is at the top of the picture). Three of the circular enclosures are probably Neolithic henge monuments (ceremonial enclosures), while the fourth may be a later prehistoric palisaded enclosure. The largest henge has a timber circle surrounding it. The solid black lines are modern field drains. The more rectilinear/square features towards the bottom of the picture may be Pictish burial monuments. The blue rectangle marks the area of the 2007 excavations. The aerial photograph is Crown Copyright © RCAHMS, and the transcription was carried out by Kirsty Millican.

If these features were not contemporary with the avenue, it may be that they formed a linear setting in their own right, either an alignment of pits, or perhaps a precursor of the avenue utilising much smaller posts. Apart from these three pits or postholes no other possible traces of an earlier avenue were identified; however, any such evidence may have been completely destroyed by the construction of the main avenue. Alternatively, these features may be associated with repairs to, or supporting elements of, the avenue, or could post-date the monument. Nonetheless, the coincidence of their alignment and recurring relationship with larger avenue posts suggests a close connection, one that may be better understood with the benefit of dating. Hopefully, therefore, analysis of environmental samples taken from these features will shed some more light on their role and relationship to the avenue.

Table 1: Posthole / pit alignment descriptions

Context No.	Relation-Ship	Description	Dimensions/Location
034	Upper Fill	Medium compaction mid orangey-brown silty-sand.	Fill of small posthole [033].
033	Cut	Oval bowl shaped cut.	0.5 by 0.45, 0.23m depth. Small posthole adjacent to avenue post [031]. Drawing # 73
040	Upper Fill	Medium compact dark brown silty gravel with frequent small pebbles.	Fill of possible posthole [039]
039	Cut	Shallow U-shaped circular cut, round bottomed, gradual slopes.	0.55 x 0.50m, by 0.27m depth. Small posthole adjacent to avenue post [037]. Drawing # 39
111	Upper Fill	Loose light brown sandy silt, small pebbles and larger angular cobbles (max 0.13m).	Fill of posthole [109].
109	Cut	Circular cut, u-shaped profile.	?Small posthole [109] fill next to avenue post [041]. Drawing # 51

The Avenue Posts

The avenue posts were larger features, and in some cases difficult to excavate, either due to depth, or flooding. Prior to excavation, in plan, a typical avenue post was defined by a dark brown silty sub-circular patch with a lighter brown extended 'tail'. These features proved to be where timber posts had once stood or the decay cones over the top of the post pipes; these were substantial features, with maximum diameter 2.2m and depth 1.25m. The lighter brown 'tail' identified extending from many of the posts appears to have been ramps to aid erection of the timbers in the postholes. The recorded shallow depth and short length of these ramps suggests that these features have suffered from a degree of truncation.

As indicated by the cropmark evidence, the avenue was defined by two parallel, but slightly irregular lines of postholes, running N-S. The avenue had a width of 4–6m.

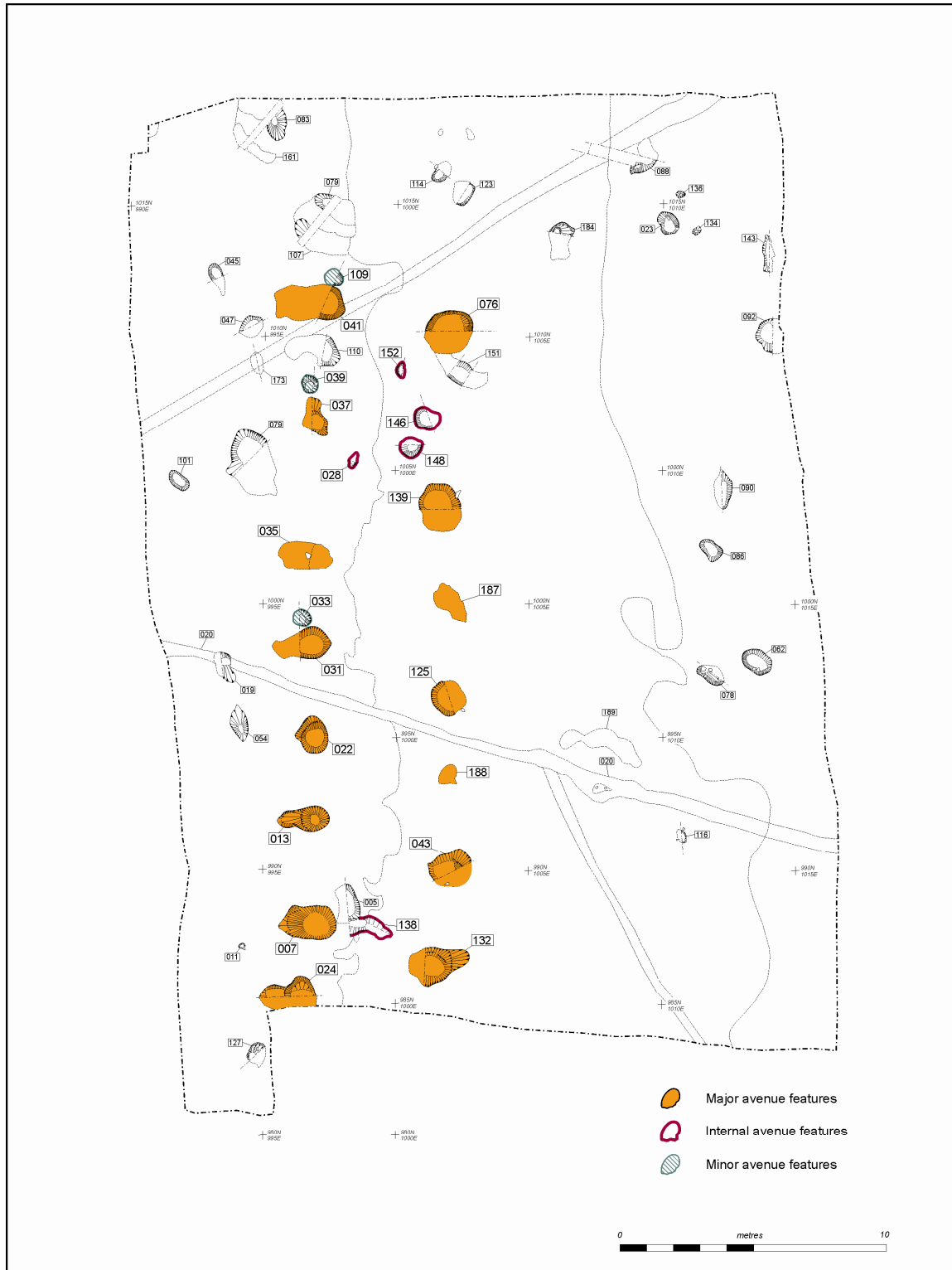


Figure 2: The post-excavation plan of the features recorded within the trench

Table 2: Postholes on the eastern side of the avenue (N to S)

Context	Relation ship	Description	Dimensions/Location
085	F	Dark brown silty loam with infrequent pebble inclusions. 1m diameter, 0.45m depth.	avenue Post [076] possible post-pipe.
108	F	Angular stone max 0.15m	avenue Post [076] ?collapsed packing.
077	F	Below fill 108, increased gravel content. Mid brown silty gravel with frequent small pebbles, pea gravel. 0.6m max depth.	avenue Post [076] slumped fill
180	F	Light to mid brown silty gravel, wet and greasy, with frequent large rounded pebbles (max 0.1m). 1.1m diameter, max 0.5m depth.	Primary fill of avenue Post [076].
076	C	Large sub-circular cut. No ramp evident in plan. Steep sides, 1.8m E-W, 1.5m N-S, 1.15m depth (but not bottomed due to water table).	avenue Post. Fills 77, 85, 180. Drawing # 100.

Notes:

- No definite post-pipe
- Not fully excavated due to water table
- Uncertain ramp direction but probably to east/southeast

170	F	Loose dark brown silt, stones (max 0.1m). Width 0.66m, depth 0.53m.	avenue post [146] Upper fill.
147	F	Loose mid brown sandy silt, small stones (0.03m max). 0.63m depth.	avenue post [146] lower fill.
146	C	Circular with steep sides, flat bottom. NW-SE – 1.09m, 1.31m E-W, depth 0.63m.	avenue post, fills 147, 170. Drawing # 79.

- Post-pipe (170), c. 0.65m.
- Uncertain ramp location

187	C	Irregular in plan. Orientation possible NW-SE.	avenue post
-----	---	--	-------------

- Unexcavated avenue post

166	F	Very loose voided stony fill. Mid to dark brown silt, but in places little soil, mostly stone. Large ?packing stones (collapsed)- up to 0.4m, angular and smaller rounded stones. Cremated bone throughout.	Rapid backfill after removal of post- with cremated bone deposits. Avenue post [139].
140	F	Medium compaction mid brown silt- see drawing 83.	Compact silty fill at side of posthole- original fill, prior to 166 removed post fill? avenue post [139]
139	C	Round in plan (uncertain ramp location). U-shaped (though not bottomed due to water-logging). Steep sides. 1.45m E-W, at least 0.9m depth. Orientation probably NW-SE.	avenue post with removed post- disturbed packing. Fills 140, 166. Drawing # 91.

- Removed post- disturbed stony fill with voids (166).
- Cremated bone throughout fill (166)
- Uncertain ramp location but probably to south/southeast

126	F	Loose dark orangey-brown sandy silt, infrequent pebbles, charcoal flecks and larger stones (max 0.2m). 1.1m, 0.25m depth. Merges with silt 002 at top. Cremated bone.	avenue post [125] upper fill. Post-pipe.
163	F	Moderately compact dark chocolate brown silt with charcoal flecks. 0.6m by 0.3m depth.	avenue post [125] mid fill. Post-pipe.
164	F	Moderately compact orangey dark tan silt with charcoal flecks and large stones (max 0.2m) 0.5m by 0.55 depth.	avenue post [125] packing and fill.
150	F	Loose dark black-brown silt with frequent substantial charcoal inclusions (up to 0.05m diameter). 0.35m by 0.35m depth.	avenue post [125] lower fill.
125	C	Sub circular, U-shaped profile, 75° sloping sides. 1.35m E-W, 1.32m N-S, 0.62m depth.	avenue post. Fills 126, 150, 163, 164. Drawing # 71.

- Uncertain post-pipe, possible 126, 163.
- Uncertain ramp location but probably to east/southeast
- Cremated bone, small fragments. Upper fill 126

188	C	Irregular in plan.	avenue post
-----	---	--------------------	-------------

- Unexcavated avenue post

175	F	Loose light yellow-grey silty sand, frequent stones (max 0.23m). 0.7m NE-SW, 0.91m NW-SE, depth 0.57m.	avenue Post [043] Ramp fill.
044	F	Medium to loose compaction black to dark brown sandy silt. Cremated bone, occasional charcoal flecks, rounded stones (max 0.08m). 1.4m E-W, 1.5m N-S, 0.3m depth.	Upper fill of avenue post [043].
176	F	Medium to loose compaction mottled black / dark grey sandy-silt, charcoal flecks, sub-angular stones (max 0.2m). 1.15m NE-SW, 1.14m NW-SE, 0.4m depth.	avenue Post [043] Post-pipe?
177	F	Loose dark grey to brown-black wet clayey silt with coarse sand and gravel, frequent gravel inclusions, charcoal. 0.8m SW-NE, 0.84m NW-SE, 0.3m depth.	Basal layer of avenue Post [043].
043	C	Circular cut with ramp to NE, U-shaped, flat-bottom. Steep sloped. 2.1m NE-SW, 1.8m NW-SE, 1.04m depth.	avenue post cut into silt. Fills 044, 175, 176, 177. Drawing # 82.

- No postpipe evident
- Ramp to east- fill 175
- Cremated bone- upper fill 044

133	F	Mid compaction dark greyish brown silt, charcoal angular stones (0.15 max). Fire-cracked stones.	avenue post [132] upper fill.
145	F	Friable dark brown medium sand, charcoal, infrequent rounded pebbles.	avenue post [132]. Charcoal dump?
132	C	Sub-circular feature with ramp. U-shaped profile. 2.23m by 1.43m by 0.7m depth. ENE-WSW.	avenue post, fills 133, 137, 157. Drawing # 74.

- No post-pipe evident
- Ramp to east

From the northern end of the avenue (henceforth called the 'entrance') the avenue on the E side began with posthole [076], the second largest posthole excavated. The final depth of this feature was unclear; excavation was abandoned due to continual flooding of the feature. This feature may have had a ramp on its E side, but there was no clear post-pipe. Proceeding south, feature [146] was originally interpreted as an avenue post due to its location; however, this was a much smaller feature than the others excavated in the avenue and may not form part of the main avenue structure. (In this sense, it may be better considered as an equivalent to the group of three features discussed above on the western side of the avenue.) The next certain posthole was [139], of similar dimensions to the very large posthole [076]. This feature had a disturbed, loose, stony fill (166), suggesting disturbance associated perhaps with post removal. Cremated human bone was found throughout (166). Feature [187] was not excavated and recorded only in plan, but its size and location means that it is almost certainly an avenue posthole. Feature [125] was the next posthole in the avenue and like [139] contained some cremated bone in its upper fill (126). However, there was strong evidence of a post having decayed *in situ* within this feature and charred timber was found in various contexts (163, 164, 150). Avenue post [043] had various fills, but no obvious post pipe, it also contained fragments of cremated bone in an upper fill (044). This feature had an obvious ramp on the E side, indicative of post erection in the feature. The final excavated posthole [132] also had a ramp to the E, but had a more homogenous fill (145). An anomalously large stone (157) was found within this posthole. This stone may have been deposited after the timber post was removed or had decayed, or it may have been an unusually large packing stone.

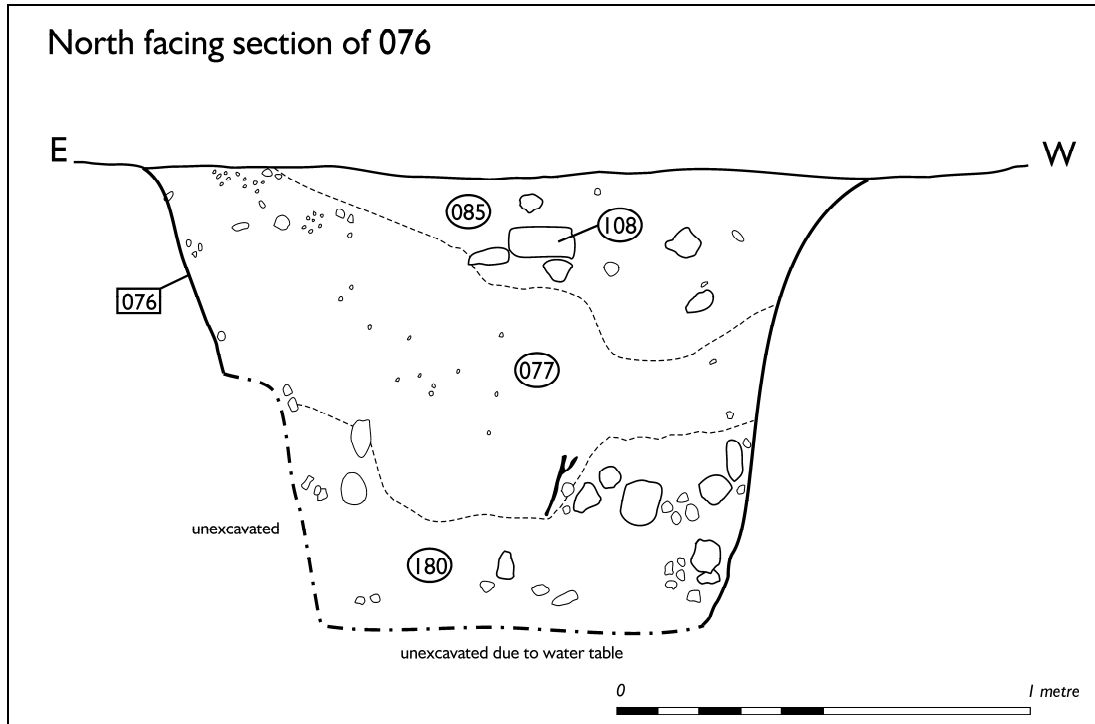


Figure 3: The largest posthole excavated on the E side of the avenue, the 'entrance' post

Table 3: Postholes on the western side of the avenue (N to S)

042	F	Loose mid brown silt, small pebbles and larger angular cobbles (max 0.2m). 0.85m by 0.5m depth.	Avenue post [041], upper fill
169	F	Loose dark brown silt, stones. 1.2m by 0.9m	Avenue Post [041] Post-pipe.
041	C	Circular cut with shallow slope to north (ramp). 1.2m by 0.9m, max depth 0.83m. NE-SW.	Avenue post, fills 042, 169. Drawing # 51.

- Possible post-pipe (042), up to 0.8m diameter. Packing material (169). Small posthole [109] adjacent.
- Not fully excavated due to watertable
- Cremated bone- upper fill. Very small quantity. Upper fill 042
- Ramp to west

038	F	Moderate compaction mid to dark brown loamy silt, with small pebbles (max 0.08m). 0.8m width, max depth 0.23m.	Avenue post [037] upper fill.
098	F	Loose mid brown silt with pea gravel, angular stones (max 0.18m).	Avenue post [037] fill. Packing material
097	F	Loose mid brown silty loam, small pebbles (max 0.1m). 0.6m wide.	Avenue post [037] fill
100	F	Loose mid brown silt, with numerous pebbles (max 0.09m).	Avenue post [037] fill
099	F	Loose light-brown orange silt, pea gravel, pebbles (max 0.04m).	Avenue post [037] fill, basal fill
037	C	Posthole with ramp, roughly triangular in plan. Orientated N-S. 1.4m N-S, c. 0.7m E-W, 0.7m depth.	Avenue post, fills 038, 097, 098, 099, 100. Drawing # 34.

- Probable post-pipe (038, 097, 099), c.0.6m diameter. Collapsed packing (098) and (100).
- Ramp to ?north

036	F	Darker post-pipe/decay cone evident in plan with lighter brown ramp fill.	
035	C	Sub-rectangular in plan. Ramp to west.	Avenue post

- Unexcavated avenue post

032	F	Medium compaction mid orangey-brown silty sand. 0.9m by 0.5m depth.	Avenue post [031], upper fill.
121	F	Compact dark grey silt, small flecks of charcoal.	Slumping layer at east side of avenue post [031].
103	F	Medium compaction dark black / grey silt, with large amount of charcoal > 60%.	Major charcoal layer in avenue post [031]

118	F	Charcoal deposits with small percentage of dark silt.	Charcoal deposits towards base of avenue post [031].
159	F	Loose grey / yellow silt, small stones / pebbles. Large percentage of charcoal.	Major charcoal layer in base of avenue post [031].
160	F	Loose grey / yellow sandy-silt.	Basal fill of avenue post [031]
112 (not in section)	F	Loose yellow-brown sandy silt, flecks of charcoal. Not in section drawings.	Ramp fill of avenue post [031].
031	C	Circular cut with ramp. 2.16m by 1.1m by 0.83m depth. E-W.	Avenue post, fills 032, 103, 112, 118, 121, 159, 160. Drawing # 50, 73.

- Post-pipe 032? c.0.7m?
- Abundant charred material found in 103, 118, 159. Basal fills of posthole- appears below post-pipe?
- Fire-cracked stones
- Ramp to west

021	F	Loose light to mid brown silty clay with infrequent small pebble inclusions (20-30mm in diameter).	Upper fill of posthole on the W side of the avenue with cut [022]
066	F	Loose dark brown clay silt with infrequent rounded pebbles of size range 20-75mm. 0.7m diameter, 0.4m depth.	Post pipe of posthole on the W side of the avenue with cut [022]
067	F	Compact dark brown silty clay with frequent large round pebble inclusions . 1.5m diameter, 0.7m depth.	Primary fill / packing stones of posthole on the W side of the avenue with cut [022]
022	C	Sub circular cut feature measuring 1.3m N-S by 1.25m, with maximum depth of 0.7m. The feature has steep sides and an irregular flat bottom, with a possible ramp on the NW side.	Posthole on the W side of the avenue with fills (021), (066) and (067). Drawing # 24.

- Clear post-pipe 021, 066 with charcoal c.0.7m diameter.
- Uncertain ramp location but probably to west/north-west

012	F	Loose light brown silty sand, 10% small pebbles. 0.53 by 0.35m depth.	avenue post [013] post-pipe fill.
068	F	Loose dark brown silty sand, occasional charcoal flecks, small rounded pebbles 0.02m. 0.55m x 0.5m depth.	avenue post [013] post-pipe fill
069	F	Medium compacted medium brown silty sand, with small pebble inclusions.	avenue post [013]. Ramp fill
070	F	Medium compaction mid brown silty sand, with small pebbles (max 0.1m).	Primary fill of avenue post [013]
013	C	Circular posthole with ramp, 0.9m N-S, 2.04m E-W, 0.8m depth.	avenue post, fills 070, 068, 012, 069. Drawing # 65.

- Clear post-pipe (012, 068), c. 0.5-0.7m diameter.
- Ramp to west

006	F	Loose dark brown silty soil with flecks of charcoal, large stones and pebbles. 0.65 x 0.50m, depth 0.15m.	avenue Post fill of cut [007]
055	F	Loose dark brown clay/silt, with a few charcoal flecks. Approx 5% small stones. 0.7m by 0.6m, depth 0.3m.	avenue Post [007] Postpipe fill.
056	F	Compact very dark brown clay/silt, with frequent charcoal flecks and some stones. Clay inclusions pink in colour as found in base of feature- probably lumps of boulder clay.	avenue Post [007] Postpipe fill.
060	F	Looses orangey-brown sandy silt, with high gravel content. 1.3m x 0.5m by 0.65m depth.	avenue Post [007] Ramp fill
057	F	Medium compaction orangey-brown clay/silt. Scattered flecks of charcoal, small stones. 0.4 x 0.6m, 0.35m depth.	avenue Post [007] Postpipe fill.
058	F	Medium compaction dark brown clay/silt, very few charcoal specks, 5% small stones. 0.8 x 0.2m by 0.25m depth.	avenue Post [007] Fill around postpipe.
059	F	Medium orangey-brown clay/silt, pea gravel inclusions. Patches of pink clay (see 056). 0.4m x 0.3m by 0.3m depth.	avenue Post [007] Ramp fill
007	C	Posthole (U-shaped) with ramp. Max 2.2m E-W, 1.1m depth	avenue Post Cut with fills 006, 055, 056, 057, 058, 059, 060. Drawing # 25.

- Clear post-pipe (055, 056, ?057), c.0.9m diameter. Ramp fill 060.
- Ramp to west

009	F	Medium compacted dark brown sandy-silt, angular pebble inclusions (0.05-0.1m),	avenue Post- postpipe fill
-----	---	--	----------------------------

071	F	Medium compaction blackish grey silt in two bands, 0.4m wide, bands each c.0.08m depth.	avenue post [024] Post-pipe fill
072	F	Medium compaction mid brown sandy silt with some angular stone inclusions. 0.3m width, 0.4m depth.	avenue post [024] Lower postpipe fill.
075	F	Loosely compacted dark brown silty-gravel, with varying angular stone inclusions. 0.9m length, 0.8m wide (approx), up to 0.2m depth.	avenue post [024]. Ramp fill
073	F	Medium compaction mid brown sandy-silt with some angular stone inclusions	avenue post [024] Lower postpipe fill.
074	F	Loose mid brown gravel with some larger angular stone inclusions (max 0.2m). 1m x 0.05m depth.	avenue post [024]. Base fill.
024	C	Posthole (U-shaped) with ramp. 2m E-W (posthole 1.2m) (ramp 0.8m). P-osthole max depth 0.5m, ramp 0.2m.	avenue Posthole with fills 009, 071, 072, 073, 074, 075. Drawing # 20.

- Clear post-pipe (009, 071, 072), c.0.5m diameter. Ramp fill 075
- Ramp to west

The most northerly posthole on the W side of the avenue, [041], was a large feature and like the opposite 'entrance' posthole [076], was not fully excavated due to flooding. Posthole [041] was the only one on the W side of the avenue to contain cremated bone in a fill (042). Adjacent to this 'entrance' post was one of the small postholes or pits of the putative earlier setting [109]. Situated between avenue posthole [041] and, the next, [037] was a probable tree throw [110] and a second small posthole or pit feature of the putative earlier setting [039]. Avenue posthole [037] was relatively small and peculiarly shaped, with a short ramp on the N side. There is then a relatively large gap (4.2m) between this post-hole and the next avenue posthole to the S [035], which was unexcavated but had a ramp on the W side. Proceeding S, before the next avenue posthole [031] was the third small posthole or pit of the putative earlier setting [033] situated at its N edge. Avenue posthole [031] was one of the most complex postholes excavated (see Figure 4. It contained a variety of fills and a considerable amount of charred material including large lumps of charcoal. The remains of a ramp was situated on the W side of posthole [031]. To the S of this posthole four further ramped avenue postholes were excavated [022], [013], [007] and [024]. . Posthole [007] was the largest of these. It contained a wider variety of fills than was typical of the other postholes (006, 055-060) indicative of a complex sequence of backfilling, perhaps after post removal, and had a ramp on the W side (see Figure 5).

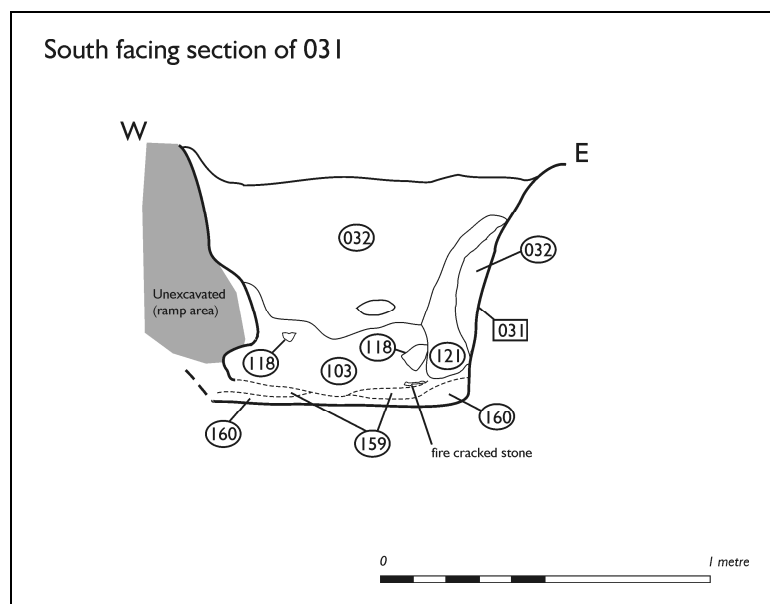


Figure 4: Posthole 031, showing complex deposits within the cut for the post

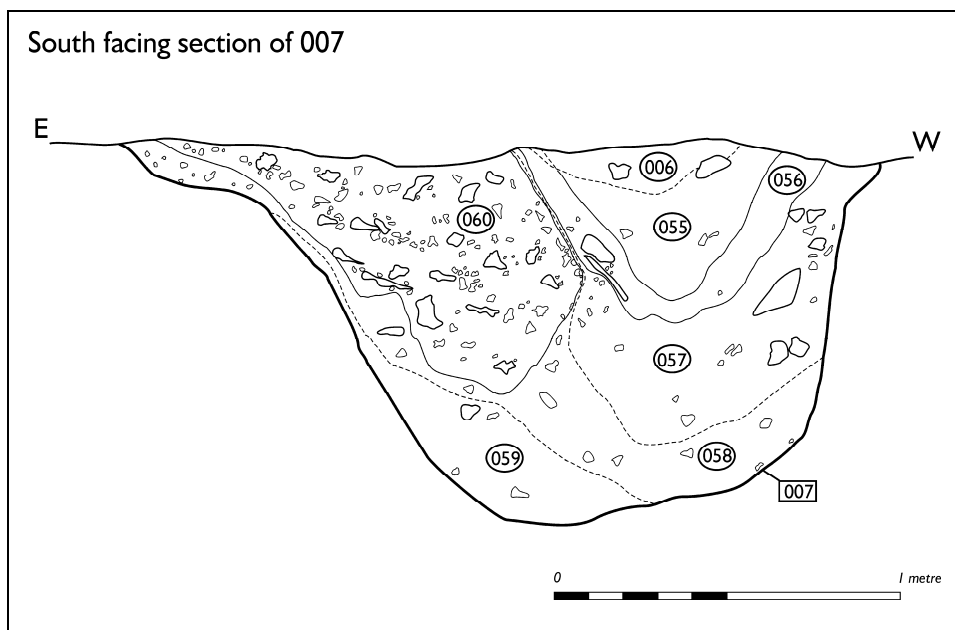


Figure 5: Posthole 007, showing clearly the backfilled ramp and gradual silting up of the pit feature, presumably after the removal of the post?

Internal Avenue Features

Within the avenue, towards the N end, several small cut features were revealed during excavation. These included two stone-packed pits, [148] and [152], of uncertain function and date, and a small pit [028] with notable quantities of charcoal in its upper fill (027). Towards the S end of the avenue, a shallow slot was identified running from the eastern lip of avenue post [007] eastwards before turning SE towards avenue post [132] on the opposite side of the avenue. This feature was cut by an oval feature [005] with clear indication of burning *in situ* in its upper fills (004, 029). None of these features could be stratigraphically related to the avenue postholes.

Table 4: Internal avenue features

Large stone filled pit 148

149	F	Moderately compact dark orangey brown silt, with very stony fill (max 0.12m). 0.35m depth.	Upper fill of [148].
168	F	Very compact light orange brown silt with stony fill (max 0.09m). 0.15m depth.	Lower fill of [148].
148	C	Round, asymmetrical profile, gently sloping on west, sharper slope on east, flat bottom. 0.8m by 0.84m by 0.35m depth.	Possible posthole / stone filled pit within avenue. Fills 049, 168. Drawing # 80.

Small stone filled pit 152

153	F	Very compact silty clay with c.50% pebbles. Dark brown. 0.48m N-S, 0.46m E-W, 0.14m depth.	Stony fill of small pit [152].
152	C	Round shallow bowl shaped cut with steep sides sloping sharply to round bottom. 0.48m N-S, 0.46m E-W, 0.14m depth.	Small pit / truncated posthole within avenue. Fill 153. Drawing # 66.

Small charcoal rich feature 028

027	F	Compact dark brown to black silty loam, with infrequent charcoal inclusions, few pebbles max 0.02m.	Upper fill of cut feature [028] in avenue area.
120	F	Loose mid brown silty gravel, with infrequent pebble inclusions (max 0.025m). Below fill 027.	Lower fill of indeterminate cut feature within avenue area [028]
028	C	Oblong cut feature 0.6m NNE-SSW by 0.25m. U-shaped profile, steep sides, rounded bottom. Max depth 0.17m.	Indeterminate cut feature within avenue area, fill 027, 120. Drawing # 42.

Slot 138

167	F	Compact greasy light brown/yellow silty sand with infrequent pebble inclusions.	Fill of possible slot feature [138] in avenue
138	C	Linear cut feature with dog-leg in centre. 0.4m width, at least 1.4m long, max depth 0.12m. E-W on west side ESE-WNW on east side. Shallow sloping cut, irregular stony bottom. Edges indistinct in plan. Cut by [005]	Possible slot feature within avenue. Fill 167. Drawing # 59.

'Pyre' feature 005

004	F	Loose dark brown silty loam with frequent charcoal flecks and lumps of carbonised wood	Pyre? Burning in situ. Fill of [005]
029	F	Compact black silty organic layer with frequent charcoal inclusions from flecks to branches (max 0.23m length). Included burnt orange soil.	Pyre? Burning in situ. Fill of [005]
030	F	Loose orange sandy gravel- lowest fill of feature	Lower pyre? fill of [005]
005	C	Cut for sub-rectangular feature with burning in situ 1.7m (N-S) by 0.8m by depth 0.42m.	Pyre? Burning in situ. Fills 004, 029, 030. Drawing # 16.

- Burnt in situ- magnetometer readings very high. Also discoloured soil. Hazel branches.

Features Outwith the Avenue

A number of features outwith the avenue were quickly identified after initial cleaning of the trench; these could be divided into two categories. The first consists of large crescent-shaped silty loam and gravel filled features which are likely to have been tree throws and represent the former position of large trees. The second category is characterised by oval or sub circular small, ephemeral pits, usually occurring in groups of two or three (see below).

Tree throws

Tree throw [151] appears to be cut by the northeasternmost avenue posthole [076] and probably therefore relates to tree cover on the gravel terrace prior to the construction of the main avenue. Several other tree throws were found around the avenue [161/083, 107 and 088]. However, as these were difficult to identify in the gravel subsoil it is likely that more may have gone undetected particularly in the silt of the palaeochannel. An unexcavated feature [189] set within the palaeochannel may have been a tree throw. The chronology of these features is uncertain, although the positioning of a tree throw [107] at the entrance of the W side of the avenue, directly in line with the east side of the avenue may suggest they may be contemporary; however the positioning perhaps may be simply coincidence.

Table 5: Tree throws & probable tree throws

Tree throws:

142	F	Medium compaction dark brown silt (lighter towards bottom of fill). Frequent charcoal inclusions, stones (max 0.2m). 1.8m x 1.1m x 0.45m depth.	Fill of tree throw banana [083]
162	F	Medium compaction dark brown silt, sub-angular stones. 0.4 x 0.35 x 0.2m depth.	Fill of southern banana tree throw [161].
083	C	Oval banana shape, U-shaped profile. Steeper west slope, shallower E slope. N-S. 2.8m x 0.9m x 0.42m depth.	Northern and larger 'banana' of tree throw. Fill 142. Southern = [161], 162
161	C	Oval / banana shaped feature, U-shaped profile. 0.4m x 0.35m by 0.2m depth. N-S.	Southern 'banana' of tree throw – See also [083]. Fill 162. Drawing # 87.

- Feature given two cut numbers for opposing crescents.

104	F	Loose dark brown silty sand, charcoal flecks, approx circular in plan within fill 113. Width max 0.4m, depth max 0.15m.	Tree throw [107] northern banana silt fill.
103	F	Medium compaction dark black / grey silt, with large amount of charcoal > 60%.	Major charcoal layer in avenue post [031]
105	F	Loose mid brown silty gravel, frequent pebbles (max 0.1m). 2m E-W max, 0.4m depth.	Tree throw [107] fill.
107	C	Oval in plan with two 'banana' shaped bands of silt with lighter gravel centre. Uncertain profile. Max 2m E-W, uncertain depth, but at least 0.2m.	Tree throw, fills 104, 105, 106. Drawing # 64.

- In line with avenue posts west side

089	F	Moderate compaction medium brown silty clay with blackish brown patches, frequent small pebbles.	Tree throw [088] fill
088	C	Banana shaped, U-shaped profile with near vertical sides, irregular bottom. 1.4m length, 0.4m wide. NNE-SSW	Tree throw, fill 089. Drawing # 88.

Probable tree throws:

181	F	Very compact dark blackish-brown silt, small stones (max 0.06m). 0.1m depth, 0.2m width.	Upper fill of tree throw [151].
154	F	Mid compaction light brownish-orange sandy silt, with angular stones (max 0.15m), 0.3m depth, 0.9m width.	Fill of tree throw [151].
151	C	Curvilinear (banana) shaped feature 1.5m long, c.1m wide, 0.5m deep. Steep sides, flat base. NE orientation.	Possible tree throw cut by avenue Post [076]. Fills 154, 181. Drawing # 93.

- Cut by avenue post [076]

141	F	Compact in centre, looser at edges. Dark brown silt. 1.05m E-W, 0.6m wide, 0.25m depth.	Tree throw banana [110] fill
110	C	Curvilinear, ?banana shaped, U-shaped profile with near vertical sides. ?1.55m SE-NW (may extend further to west), 0.75m wide, 0.25m depth.	Possible tree throw- only banana visible, fill 141. Drawing # 69.

- Possibly cut by avenue post [037] and post [039] if full extent not excavated.

080	F	Medium compaction dark brown silty clay, with angular stones up to 0.15m, pea gravel, small pebbles. 1.1m across (NE-SW), 0.28m max depth.	Tree Throw [079] fill
081	F	Quite compact dark brown silty clay, with angular stones up to 0.15m, pea gravel, small pebbles. 1.8m NE-SW, 0.33m max depth.	Tree Throw [079] fill
079	C	Irregular oval/circular in plan but irregular sides and slopes. Shallower on west side, sloping to deeper bottom on east side. 1.9m across, 0.33m depth at max.	Tree Throw, fills 080, 081. Drawing # 32.

144	F	Loose greyish brown silty gravel, pebbles, larger stones (max 0.24m).	Possible tree throw [143]
143	C	Oval / banana shaped feature with a U-shaped profile. 1.4m by 0.3m by 0.3m depth. N-S.	Possible tree throw, fill 144. Drawing # 58.

Pits outwith the avenue

Around the avenue numerous shallow oval pits were found (see tables below). These did not contain finds and at the time of the excavation little charred material could be identified. These features have, however, been rigorously sampled for environmental and dating evidence, which may shed more light on the function and date of these features. It was noted during excavation that these features tended to occur in 'pairs'.

Table 6: Features outwith the avenue

Oval pit 019

017	F	Loose light brown clean silt with many small pebble angular inclusions of 15-20mm, and infrequently 50-100mm across.	Fill of indeterminate feature with cut [019] within avenue area
019	C	Irregular elongated oval-shaped cut feature measuring 1.41m N-S (long axis) by 0.4m, and maximum depth 0.21m. The feature has a rounded bottom with steep sides.	Indeterminate feature within the avenue area, single fill (018), cut by [020]. Drawing # 14.

- cut by field drain 020

Oval pit 054

061	F	Loose dark brown silty clay with infrequent small angular stones at base of fill. 2nd fill. 0.2m diameter, 0.15m depth.	Oval pit fill- postpipe? Cut [054]
053	F	Loose mid brown silty sand with infrequent small angular pebbles, infrequent larger cobbles. 0.63m width at max, 0.2m depth.	Oval pit, fill of [054]
054	C	Bowl shaped pit, max dimensions 1.35m N-S, 0.63m E-W, 0.2m depth.	Oval pit Cut. Fill 053. Drawing # 23.

Oval pit 078

082	F	Medium compaction dark blackish brown silt, pebble inclusions. 0.44m, 0.19m depth.	Oval pit [078] upper fill
084	F	Medium compaction dark brown silty loam, pebbles, pea gravel. 1m x 0.74m, 0.25m depth.	Oval pit [078] lower fill
078	C	Oval cut (NW-SE) with irregular bottom, deeper at north-west end. 1m x 0.74m, 0.25m depth.	Oval Pit, fills 082, 084. Drawing # 33.

Oval pit 086

087	F	Moderate compaction dark brown silty clay, pebbles clay. 1m x 0.6m by 0.3m depth.	Oval pit [086] single fill
086	C	Oval/oblong (NW-SE) U-shaped cut with flat base. 0.6m x 1m by 0.3m depth.	Oval pit, fill 087. Drawing # 36.

Oval pit 047

048	F	Loose medium orange-brown silt, with angular stones (max 0.15m).	Truncated pit [047] in line with E side of avenue.
156	F	Friable mid to dark brown silt, charcoal inclusions. Small fill 0.035m diameter.	Truncated pit [047] in line with E side of avenue.
047	C	Oval, U-shaped cut with sloping sides, rounded bottom. 1m x 0.7m, by 0.2m depth. WSW-ESE.	Truncated pit in line with E side of avenue. Fill 048, 156. Drawing # 38.

Oval pit 062

063	F	Oval (NE-SW) shallow bowl-shaped cut. 1.15m x 0.9m by 0.2m.	Oval pit, fill 062
062	C	Medium compaction dark brown silt, with angular stones 0.24m max. 0.9m x 1.15m by 0.2m depth.	Oval pit fill. Cut [063]. Drawing # 37.

Oval pit 090

091	F	Moderate compaction dark brown sandy silt, with pebbles, pea gravel. 1.42m x 0.82m x 0.22m depth.	Part of oval pit group? [090]
090	C	Irregular figure of eight shaped feature (N-S), flat-bottomed, U-shaped. 1.42m x 0.82m, 0.22m depth.	Part of oval pit group? Fill 091. Drawing # 40.

Oval pit 102

102	F	Moderate compaction brownish red silt with small pebbles (max 0.12m) and pea gravel. 0.9m by 0.5m by 0.28m depth.	Oval pit [101]
101	C	Oval, U-shaped profile, steep sides, 0.9m NW-SE, 0.5m wide, 0.28m depth.	Oval pit, fill 102. Drawing # 41.

Oval pit / tree crescent 045

046	F	Moderate compaction light-brown sandy silt with small pebbles (max 0.08m).	Oval Pit / Tree Throw banana [045] Upper fill
131	F	Moderate compaction medium orangey-brown silty gravel, with small rounded stone (max 0.03m) and pea gravel. Around base and sides of feature.	Basal fill of oval pit / tree throw banana
045	C	Oval / banana shaped feature with U-shape profile. Sharp slope at sides, flat bottom, 1.3m NW-SE, 0.6m wide max, 0.25m depth.	Oval Pit / Tree Throw banana, fills 046, 131. Drawing # 44.

Oval pit 173

174	F	Medium compaction mid brown silty-sand with small stones.	Oval pit [173] single fill.
173	C	Oval, bowl-shaped with flat bottom. 0.9m by c.0.4m by 0.18m depth. NW-SE.	Oval pit, fill 174. Drawing # 86.

- Cut by furrow 171

Oval pit / tree crescent 184

185	F	Very compact light brown-yellow silty sand, very clean fill, very few stone inclusions. West side of feature, max 0.5m wide.	Oval pit / tree throw [184] fill.
186	F	Compact yellow to light brown silty gravel with frequent small pebble inclusions (max 0.03m). East side of feature. Max 0.3m width.	Primary fill of Oval pit / tree throw [184].
184	C	Amorphous oval cut feature with bowl-shaped profile, deeper on west side. 0.8m E-W, 1.48m N-S, 0.14-0.24m depth.	Oval pit / tree throw. Fills 185, 186. Drawing # 104.

Small charcoal rich pit to east 116

117	F	Medium compaction dark brown silt, with large amounts of charcoal, small pebbles and pea gravel.	Heavily truncated small pit with burnt material
-----	---	--	---

116	C	Sub oval shallow bowl, gentle slopes, 0.5 n-S by 0.3m, 0.05m depth.	Heavily truncated small pit with burnt material, fill 117. Drawing # 48.
-----	---	---	--

Small pit 011

008	F	Compact dark brown silt / silt loam with 30% rounded pebble inclusions < 60mm.	Single fill of a shallow cut feature [cut 011] outwith avenue area
011	C	Circular cut feature measuring 0.26m in diameter with maximum depth 0.16m. Irregular stony base with shallow sides.	Small cut feature outwith the avenue area with a single fill (008). Drawing # 13.

Circular pit 127

128	F	Compact dark brown silt, stones.	Pit [127].
183	F	Loose dark brown to light brown gravel with frequent pebbles (max 0.05m). Max depth 0.18m	Primary fill of cut feature [127].
127	C	Circular bowl shaped cut with steep sides. 0.75m by 0.7m by 0.28m depth. NE-SW.	Pit in trench extension. Fills 128, 183. Drawing # 85.

Large pit

093	F	Moderate dark brown silt with small pebbles. 1.45m N-S, 0.32m depth	Pit in E baulk [092].
092	C	?Circular in plan, bowl shaped profile, steep sides and irregular bottom. 1.45m N-S, 0.32m depth.	Pit in E baulk, fill 093. Drawing # 56.

- in eastern baulk 092

Possible timber setting

In the NE corner of the trench, a large posthole [023] was found with two attendant smaller pits or remnants of postholes or even stakeholes [136] and [134]. This is a possible timber setting erected away from the main enclosure. No artefacts were found in association with these features; environmental sampling may tell us more.

Table 7: Possible timber setting

014	F	Compact dark grey-brown silty loam with frequent small pebbles, occasional flecks of charcoal near centre of feature.	Post-pipe posthole away from avenue. Fill of [024]
050	F	Mid brown silty gravel. Charcoal flecks. 0.25m max.	Postpipe fill of post [023] away from enclosure
049	F	Loose brown silty gravel with large round pebbles at edge of fill. 0.25 width max.	Postpipe fill of post [023] away from enclosure
051	F	Loose light brown silty gravel.	Postpipe fill of post [023] away from enclosure
052	F	Packing stones, max 0.2m between edges of cut and postpipe	Postpipe fill of post [023] away from enclosure
064	F	Dark blackish brown silty clay sand with max thickness 0.03m	Turf? in posthole away from avenue, [023]
023	C	Circular cut feature diameter 0.8m with max depth 0.62m. U shaped.	Posthole to east of avenue. Fills- 014, 049, 050, 051, 052, 064. Drawing # 15.

- Posthole found in Sector I away from avenue. Of different character and form to avenue posts. Smaller, no ramp.

Adjacent features: 2 small pits

135	F	Moderate compaction mid brown silty gravel. 0.27m E-W, 0.22 N-S, 0.18m depth	Truncated pit [134], fill
134	C	Oval, U-shaped profile sloping sides with irregular bottom. 0.27m E-W, 0.22 N-S, 0.18m depth.	Truncated pit, fill 135. Drawing # 55.
137	F	Moderate compaction mid brown silty gravel, pebbles (max 0.15m). 0.39m x 0.31m by 0.18m depth.	Truncated pit [136], fill
136	C	Su-circular bowl shaped with flat bottom. 0.39m x 0.31m by 0.18m depth. E-W.	Truncated pit, fill 137. Drawing # 54.

Discussion

Although this report was written in advance of much of the post-excavation work, we can make some provisional interpretations and observations.

Avenue construction and the timber posts

The excavated avenue postholes suggest a monumental entrance passage to the palisaded enclosure. At this stage, we can make some general observations about the nature and form of the avenue.

Firstly, how large were the timber posts used? Various calculations have been made on posthole depths in relation to the possible heights of timbers held within the postholes (e.g. Mercer 1981, 149ff). Regardless of the form of calculation, this is usually thought to be on a scale of 1:3 or 1:3.5 (see Figure 6). The deepest postholes at Forteviot, [076] and [007], at just over a metre depth, could theoretically have supported timbers of 4-5m in length. However millennia of tree clearance, agriculture and other erosion would likely have substantially denuded the ground level and we estimate that in prehistory as much as 1m of soil may have once existed above the present level of the gravel surface (Campbell 2008; Speak & Burgess 1999), leaving open the possibility of tree trunks of 6m length or more *above ground*. Furthermore, a tree has around two-thirds of its weight concentrated towards its base, and so even this figure may be a conservative estimate for the larger postholes. Not all of the excavated avenue posts were on this scale. Some, such as [024], were only around 0.5m deep, which means, using the calculation outlined above; a timber set within this posthole may have stood only 2-2.5m above the ground surface. However, given the weight distribution noted above and the fact that these were very substantial timbers (0.5-0.9m width where identifiable) larger heights may have been possible even in relatively shallow postholes.

The presence of ramps is an indication of the weight and awkwardness of the posts handled at the palisaded enclosure at Forteviot. The ramps are generally located towards the exterior of the avenue, consistent with post erection having occurred when other posts were already standing. Taking the weight of green oak (for instance), 1073.34kg per cubic metre (Mercer 1981, 152-3), the posts that stood in this avenue may have weighed as much as 3-5 tons, representing a considerable logistical challenge to move and erect.

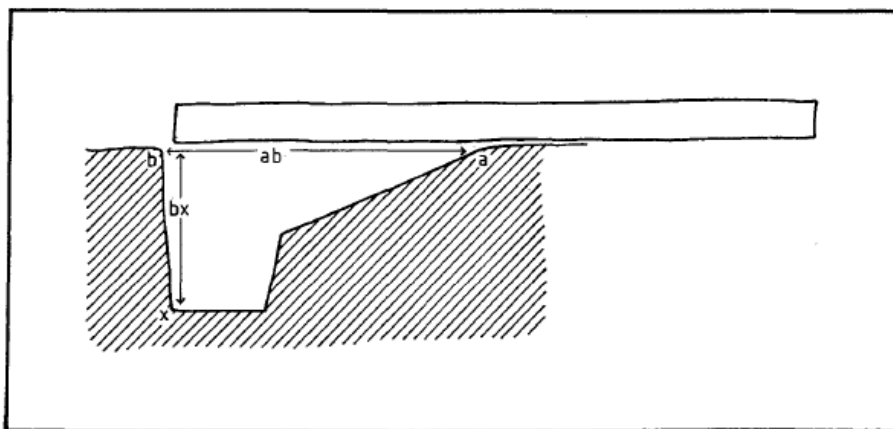


FIG 49 Diagram to illustrate the method of timber erection using ramped post holes and post sockets for calculation of timber length

Figure 6: Stylised section of ramped posthole and dimensions used to calculate height and width (from Mercer 1981, Fig 49)

The reconstruction drawing of the Meldon Bridge palisaded enclosure (Burgess 1976, 177) implies a regular monument defined by straight telegraph pole-like timbers. The evidence from the 2007 trench at the Forteviot enclosure avenue suggests a much more organic monument in appearance, with different sizes of posts used to construct the avenue. This irregularity is mirrored in the layout of the avenue. Neither the west or east side of the avenue is strictly a straight line, nor are the posts in the avenue situated directly opposite one another. They are staggered rather than opposing, but the stagger is not regular either, with some gaps between posts larger than others. It will be interesting to see if the radiocarbon dating results suggest any temporal differences in the date of the erection of these various avenue posts. To continue the theme of organic appearance, it would be wrong to assume that these massive posts were akin to telegraph poles; they may have retained branches and leaves, retaining more of their tree-like form; the possible presence of a living tree in line with the W side of the avenue may have heightened this effect.

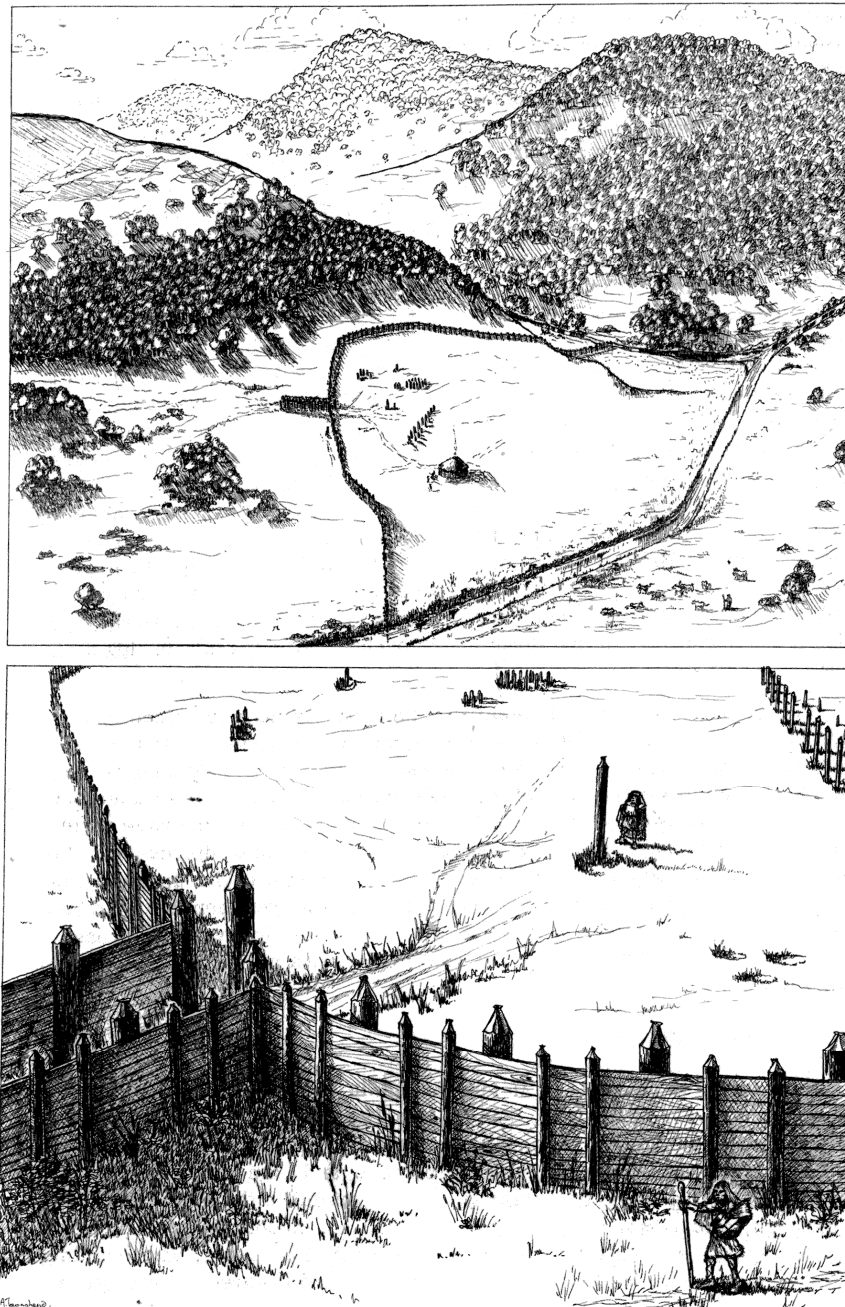


Figure 7: Reconstruction drawing of the Meldon Bridge palisaded enclosure (Burgess 1976, 177 fig 9.9)

We should be able to say a lot more about the form of the architecture after post-excavation analyses have been undertaken. Large quantities of charred timber were recovered from a number of avenue posts. This will allow us to identify the species of trees used in the avenue's construction and whether the tree trunk uprights were joined by any form of fencing. Intriguingly, a large quantity of charred material was found at the base of two postholes, [031] and [125]. The charred material did not appear to be within the post-pipes of these postholes and therefore would seem to represent material deposited before the erection of the post. At Meldon Bridge charred material was found in the bottom of a number of postholes; this was interpreted as the burnt remains of trimmings from the tree trunks of the enclosure postholes (Speak & Burgess 1999, 100). This could also be the case at Forteviot, but there are other possibilities. One possible alternative is that the charred material relates to an earlier destroyed timber monument, the hints of which may be seen by features such as the postholes or pits [109], [039] and [033].

Equally interesting is the range of strategies used when the monument was presumably decommissioned, or abandoned. In some cases, posts seem to have been removed, in one case causing (perhaps unsurprisingly) great disturbance. In other cases, posts may have decayed e.g. [139] or fallen [076], while in at least one posthole the post may have been burnt *in situ* [031]. This range of strategies suggests a number of processes occurring at the end of the life of this monument.

It is our intention to investigate the junction between the avenue and the enclosure in a later season of the SERF project. This will allow us to test whether the posts of the avenue are representative of the boundary of the enclosure as a whole. Aerial photography and auguring (carried out during the excavation) has identified a large pit, around 4m in diameter, which sits at in the centre of the avenue at the very entrance into the enclosure. The rapid augur survey suggests this pit contains cremated human bone. This should also be investigated in future seasons.

Human Remains

Cremated human bone was found in four of the excavated avenue postholes [043], [125], [139] and [041]. In three of these the amounts were very small, just a few small fragments in some cases. Avenue post [139], however, contained a larger quantity. This posthole also had a very distinct, extremely stony-fill [166] with lots of voids; the section of this feature repeatedly collapsed as the fill was very loose. Cremated bone was found throughout the fill of this feature. The voided stony fill is suggestive of rapid backfill and a major disturbance to the posthole, interpreted as the removal of the post and the deposition of cremated remains in the backfill of the post. The cremated bone recorded in the other avenue posts also came from the upper fills. These deposits may also relate to the end of the lifespan of the timbers within these postholes, when cremated remains were perhaps placed on top of or around decaying timbers and subsequently, through post-depositional processes finding their way into the decay cones of the postholes. As with other Neolithic timber monuments the end of the lifespan of the timbers may have been accompanied by elaborate closure ceremonies in which cremation deposits were deposited in association with the decaying or removed timbers. It would certainly appear that each timber set within the avenue had a different life history. Burnt material was deposited at the base of some of the timbers, some were older than others when erected, and each may have come from different locations in the landscape.

Internal Avenue Features

In the 2007 excavations there was one feature that could be interpreted as part of the internal division of space within the avenue itself. Slot [138] ran from the edge of

avenue post [007] eastwards before dog-legging towards avenue post [132] on the opposite side of the avenue. This could have been part of an internal screen or gate that funnelled movement or controlled access within the avenue. This slot was cut by a heavily burnt feature [005]. Overall there were only a few features recorded within the avenue. Apart from the slot [138], there were two stone-packed pits [148] and [152] of uncertain function and a small pit with lots of charcoal [028]. The most interesting feature was feature [005]. This contained large burnt branches of timber, some of which still had their bark visible. Judging by the soil discolouration in this feature and the high magnetic readings the wood in this pit had been burnt in-situ. Feature [005] cut slot [138] and may be part of the closing activities on the site.

Tree Throws

A number of crescent-shaped features appeared in the gravels after the trench was cleaned. These were interpreted as tree throws or tree pits that represent the former position of large trees. Tree pits or tree throws are identified on many archaeological sites, but often in the past have been ignored and left unexcavated as natural features. However, excavations in southern England over the last decade or so have identified many sites where artefacts and charred material have been found within the fills of tree throws, a phenomenon that appears to have been particularly common in the Neolithic period. The tree pits at Forteviot were very hard to excavate. The best examples were characterised by two opposing crescents or 'banana-shaped' areas of silt with a clean gravel fill in the centre. The edges of the crescents were easy to identify, but no definite bottom to any of the tree throws were identified due to the difficulties in differentiating between the gravel fills and the natural gravel subsoil. In many cases the tree pits were identified and interpreted solely by the presence of the silty crescent shaped fills. Even in better feature identifying conditions the crescents are often the only recognizable element of a tree throw (Barclay et al 2003: 62-3). There may have been many more tree throws in the trench than identified on the plan. Some of the oval pits could be the vestiges of tree pits (and some have been interpreted as such) and others probably occurred in the silty area, but identification here was even harder than elsewhere in the trench.

Two possible tree pits had a direct relationship with avenue posts; tree pit [151] was cut by post [076] and tree pit [110] appeared to be cut by avenue post [037]. If this is the case these may well relate to pre-monument woodland clearance in the Neolithic. Another interesting tree pit was [107], which was actually in line with the W side of the avenue at the northern end and was a distance from the end post [041] consistent with gaps between other avenue posts. It is possible that the avenue (or the possible earlier phase of the avenue) incorporated a living tree within the architecture of the monument. Again it will be important to try and date this tree pit, if suitable material is available. The other side of the avenue may also have had a less formal ending (or beginning). Two pits with charred material [114] [123] were found on the line of the E side of the avenue.

Pit Features Around Avenue

Around the avenue numerous shallow oval pits were found. These often occurred in pairs or small groups. Little can be said about these at present as no artefacts came from these and they tended to have a single, largely sterile, fill or in some cases two fills. Some of these 'pits' such as [143] could be part of tree throws, but others seemed to be the bases of very truncated pits. These could be Earlier Neolithic pits or much later features. We will only know a little more if some datable material can be recovered from the extensive samples we took from these features. There were a few other features of different character, including a small number of circular pits with charcoal such as feature [116]. Again little can be said about these at present.

Finds

There was a surprising lack of artefacts from the site and virtually none from the avenue features themselves other than the cremated bone and the charcoal in the postholes. A small number of chipped stone artefacts were retrieved including two pieces of pitchstone which probably derive from the island of Arran off the southwest coast of Scotland. Pitchstone is being found in increasing quantities at important Neolithic sites in Scotland.

Open Day

The site open day was held on Sunday 19th August. Over 200 people came to visit the site. In total over the three weeks we probably had approximately 300 visitors, which is a large number considering the location of the site and the small local population centres around Forteviot. Visitor numbers were boosted by the broadcasting of a small section in the North-East news programme North Tonight. For the open day we marked the perimeter of the enclosure with bamboo canes and orange survey flags to give people an impression of the sheer scale of the enclosure. This was an interesting exercise as we experienced the micro-topography of the site. From one side of the enclosure it is actually difficult to see the other side and in some places the ground surface rises in the centre of the enclosure making visibility from one side of the palisaded enclosure to the other impossible. The large henge in the interior of the palisaded enclosure is placed on the most prominent rise in the centre of the palisaded enclosure and would have dominated the enclosure (assuming it is contemporary). We also made a 7m 'post' out of some thin timber to give our visitors an idea of the potential height of some of the posts, the potential size of some of the Avenue posts was quite dramatic.

Conclusions

The 2007 excavations underlined the scale of the palisaded enclosure at Forteviot and the endeavour that went into building the enclosure. Many large tree trunks were used to build the avenue and aerial photographs suggests that the rest of the perimeter was marked in a similar fashion. No interval posts were found between the large timbers. This is in contrast to the Meldon Bridge enclosure, however, the Meldon Bridge avenue, from aerial photographs at least, looks more regular than the Forteviot avenue and there may be important differences in the materiality and architecture of these monuments to tease out over the coming years. The relationship between the avenue and the tree throws is an interesting one and one that will be important to try and tie down chronologically. The lack of material culture is noteworthy, but fits the pattern of other enclosures of this size which can often have relatively little finds associated.

References

- Burgess, C 1976 'Meldon Bridge: a Neolithic defended promontory complex near Pebbles' in Burgess, C & Miket, R (eds) *Settlement and Economy in the Third and Second Millennia B.C.*, 151-180, BAR 33, Oxford
- Gibson, A (ed) 2002 *Behind wooden walls: Neolithic palisaded enclosures in Europe*. BAR, Oxford.
- Mercer, RJC 1981 The excavation of a late Neolithic henge-type enclosure at Balfarg, Markinch, Fife, Scotland, 1977-78, *Proceedings of the Society of Antiquaries of Scotland* 111, 63-171.
- Speak, S & Burgess, C 1999 Meldon Bridge: a centre of the third millennium BC in Peebleshire, *Proceedings of the Society of Antiquaries of Scotland* 129, 1-118.

- St Joseph, J K S 1976 'Air reconnaissance: recent results, 40', *Antiquity* 52 (1978), 48-50.
- Thomas, J 2001 Neolithic enclosures: reflections on excavations in Wales and Scotland, in T Darvill & J Thomas (eds) *Neolithic enclosures in Atlantic NW Europe*, 132-43, Oxbow, Oxford.
- Varndell, G & Topping, P 2002 (eds) *Enclosures in Neolithic Europe*. Oxbow, Oxford.
-

Appendices

i) Contexts

Context No.	Type	Description	Interpretation & notes
001	L	Medium brown clayey silt	Topsoil
002	L	Compact light to mid brown very fine silt with moderate charcoal flecks. Depth average 0.2m	Silt
003	L	Orangey brown silty gravel with inclusions of large angular and rounded stones	Subsoil
004	F	Loose dark brown silty loam with frequent charcoal flecks and lumps of carbonised wood	Pyre? Burning in situ
005	C	Cut for sub-rectangular feature with burning in situ 1.7m (N-S) by XX by depth 0.42m.	Pyre? Burning in situ. Fills 004, 029, 030
006	F	Loose dark brown silty soil with flecks of charcoal, large stones and pebbles. 0.65 x 0.50m, depth 0.15m.	Avenue Post fill of cut [007]
007	C	Posthole (U-shaped) with ramp. Max 2.2m E-W, 1.1m depth	Avenue Post Cut with fills 006, 055, 056, 057, 058, 059, 060
008	F	Compact dark brown silt / silt loam with 30% rounded pebble inclusions < 60mm.	Single fill of a shallow cut feature [cut 011] outwith avenue area
009	F	Medium compacted dark brown sandy-silt, angular pebble inclusions (0.05-0.1m),	Avenue Post- postpipe fill
010	C	Non Archaeological	
011	C	Circular cut feature measuring 0.26m in diameter with maximum depth 0.16m. Irregular stony base with shallow sides.	Small cut feature outwith the avenue area with a single fill (008)
012	F	Loose light brown silty sand, 10% small pebbles. 0.53 by 0.35m depth.	Avenue post [013] post-pipe fill.
013	C	Circular posthole with ramp, 0.9m N-S, 2.04m E-W, 0.8m depth.	Avenue post, fills 070, 068, 012, 069
014	F	Compact dark grey-brown silty loam with frequent small pebbles, occasional flecks of charcoal near centre of feature.	Post-pipe posthole away from avenue. Fill of [024]
015		Same as 002	
017	F	Loose light brown clean silt with many small pebble angular inclusions of 15-20mm, and infrequently 50-100mm across.	Fill of indeterminate feature with cut [019] within avenue area
018	F	Loose, rooty dark grey / brown silty sand with numerous small to medium size rounded & angular pebble inclusions, and some mixed gravel patches.	Fill of modern field drain with cut [020]
019	C	Irregular elongated oval-shaped cut feature measuring 1.41m N-S (long axis) by 0.4m, and maximum depth 0.21m. The feature has a rounded bottom with steep sides.	Indeterminate feature within the avenue area, single fill (018), cut by [020]
020	C	Rectilinear cut with width c.0.26m that is visible across the trench, with axis NW-SE. Not fully bottomed. Field drain in the base of the feature.	Modern field drain with single fill (018)
021	F	Loose light to mid brown silty clay with infrequent small pebble inclusions (20-30mm in diameter).	Upper fill of posthole on the W side of the avenue with cut [022]
022	C	Sub circular cut feature measuring 1.3m N-S by 1.25m, with maximum depth of 0.7m. The feature has steep sides and an irregular flat bottom, with a possible ramp on the NW side.	Posthole on the W side of the avenue with fills (021), (066) and (067)
023	C	Circular cut feature diameter 0.8m with max depth 0.62m. U shaped.	Posthole to east of avenue. Fills- 014, 049, 050, 051, 052, 064
024	C	Posthole (U-shaped) with ramp. 2m E-W (posthole 1.2m)	Avenue Posthole with fills

		(ramp (0.8m). Posthole max depth 0.5m, ramp 0.2m.	009, 071, 072, 073, 074, 075
025		Non Archaeological	
026		Non Archaeological	
027	F	Compact dark brown to black silty loam, with infrequent charcoal inclusions, few pebbles max 0.02m.	Upper fill of cut feature [028] in Avenue area.
028	C	Oblong cut feature 0.6m NNE-SSW by 0.25m. U-shaped profile, steep sides, rounded bottom. Max depth 0.17m.	Indeterminate cut feature within Avenue area, fill 027, 120.
029	F	Compact black silty organic layer with frequent charcoal inclusions from flecks to branches (max 0.23m length). Included burnt orange soil.	Pyre? Burning in situ. Fill of [005]
030	F	Loose orange sandy gravel- lowest fill of feature	Lower pyre? fill of [005]
031	C	Circular cut with ramp. 2.16m by 1.1m by 0.83m depth. E-W.	Avenue post, fills 032, 103, 112, 118, 121, 159, 160
032	F	Medium compaction mid orangey-brown silty sand. 0.9m by 0.5m depth.	Avenue post [031], upper fill.
033	C	Oval bowl shaped cut. 0.5 by 0.45, 0.23m depth.	Small posthole adjacent to Avenue post [031].
034	F	Medium compaction mid orangey-brown silty-sand.	Fill of small posthole [033].
035	C	Unexcavated Avenue post	
036	F	Unexcavated Avenue post	
037	C	Posthole with ramp, roughly triangular in plan. Orientated N-S. 1.4m N-S, c. 0.7m E-W, 0.7m depth.	Avenue post, fills 038, 097, 098, 099, 100
038	F	Moderate compaction mid to dark brown loamy silt, with small pebbles (max 0.08m). 0.8m width, max depth 0.23m.	Avenue post [037] upper fill.
039	C	Shallow U-shaped circular cut, round bottomed, gradual slopes. 0.55 x 0.50m, by 0.27m depth.	Cut for possible truncated posthole on line of Avenue. Part of earlier Avenue? Fill 040.
040	F	Medium compact dark brown silty gravel with frequent small pebbles.	Single fill of possible posthole [039]
041	C	Circular cut with shallow slope to north (ramp). 1.2m by 0.9m, max depth 0.83m. NE-SW.	Avenue post, fills 042,
042	F	Loose mid brown silt, small pebbles and larger angular cobbles (max 0.2m). 0.85m by 0.5m depth.	Avenue post [041], upper fill
043	C	Circular cut with ramp to NE, U-shaped, flat-bottom. Steep sloped. 2.1m NE-SW, 1.8m NW-SE, 1.04m depth.	Avenue post cut into silt. Fills 044, 175, 176, 177.
044	F	Medium to loose compaction black to dark brown sandy silt. Cremated bone, occasional charcoal flecks, rounded stones (max 0.08m). 1.4m E-W, 1.5m N-S, 0.3m depth.	Upper fill of Avenue post [043].
045	C	Oval / banana shaped feature with U-shape profile. Sharp slope at sides, flat bottom, 1.3m NW-SE, 0.6m wide max, 0.25m depth.	Oval Pit / Tree Throw banana, fills 046, 131
046	F	Moderate compaction light-brown sandy silt with small pebbles (max 0.08m).	Oval Pit / Tree Throw banana [045] Upper fill
047	C	Oval, U-shaped cut with sloping sides, rounded bottom. 1m x 0.7m, by 0.2m depth. WSW-ENE.	Truncated pit in line with E side of avenue. Fill 048, 156
048	F	Loose medium orange-brown silt, with angular stones (max 0.15m).	Truncated pit [047] in line with E side of avenue.
049	F	Loose brown silty gravel with large round pebbles at edge of fill. 0.25 width max.	Postpipe fill of post [023] away from enclosure
050	F	Mid brown silty gravel. Charcoal flecks. 0.25m max.	Postpipe fill of post [023] away from enclosure
051	F	Loose light brown silty gravel.	Postpipe fill of post [023] away from enclosure
052	F	Packing stones, max 0.2m between edges of cut and postpipe	Postpipe fill of post [023] away from enclosure
053	F	Loose mid brown silty sand with infrequent small angular pebbles, infrequent larger cobbles. 0.63m width at max, 0.2m depth.	Oval pit, fill of [054]
054	C	Bowl shaped pit, max dimensions 1.35m N-S, 0.63m E-W, 0.2m depth.	Oval pit Cut. Fill 053
055	F	Loose dark brown clay/silt, with a few charcoal flecks. Approx 5% small stones. 0.7m by 0.6m, depth 0.3m.	Avenue Post [007] Postpipe fill.
056	F	Compact very dark brown clay/silt, with frequent charcoal flecks and some stones. Clay inclusions pink in colour as found in base of feature- probably lumps of boulder clay.	Avenue Post [007] Postpipe fill.
057	F	Medium compaction orangey-brown clay/silt. Scattered flecks of charcoal, small stones. 0.4 x 0.6m, 0.35m depth.	Avenue Post [007] Postpipe fill.
058	F	Medium compaction dark brown clay/silt, very few charcoal specks, 5% small stones. 0.8 x 0.2m by 0.25m depth.	Avenue Post [007] Fill around postpipe.

059	F	Medium orangey-brown clay/silt, pea gravel inclusions. Patches of pink clay (see 056). 0.4m x 0.3m by 0.3m depth.	Avenue Post [007] Ramp fill
060	F	Looses orangey-brown sandy silt, with high gravel content. 1.3m x 0.5m by 0.65m depth.	Avenue Post [007] Ramp fill
061	F	Loose dark brown silty clay with infrequent small angular stones at base of fill. 2 nd fill. 0.2m diameter, 0.15m depth.	Oval pit fill- postpipe? Cut [054]
062	C	Medium compaction dark brown silt, with angular stones 0.24m max. 0.9m x 1.15m by 0.2m depth.	Oval pit fill. Cut [063]
063	F	Oval (NE-SW) shallow bowl-shaped cut. 1.15m x 0.9m by 0.2m.	Oval pit, fill 062
064	F	Dark blackish brown silty clay sand with max thickness 0.03m	Turf? in posthole away from avenue, [023]
065	F	Grey-pink clay, very compact and damp, small pebble inclusions (max 0.02m).	Glacial till in ramp fill- similar to material in bottom of Avenue Post [007]
066	F	Loose dark brown clay silt with infrequent rounded pebbles of size range 20-75mm. 0.7m diameter, 0.4m depth.	Post pipe of posthole on the W side of the avenue with cut [022]
067	F	Compact dark brown silty clay with frequent large round pebble inclusions . 1.5m diameter, 0.7m depth.	Primary fill / packing stones of posthole on the W side of the avenue with cut [022]
068	F	Loose dark brown silty sand, occasional charcoal flecks, small rounded pebbles 0.02m. 0.55m x 0.5m depth.	Avenue post [013] post-pipe fill
069	F	Medium compacted medium brown silty sand, with small pebble inclusions.	Avenue post [013]. Ramp fill
070	F	Medium compaction mid brown silty sand, with small pebbles (max 0.1m).	Primary fill of Avenue post [013]
071	F	Medium compaction blackish grey silt in two bands, 0.4m wide, bands each c.0.08m depth.	Avenue post [024] Post-pipe fill
072	F	Medium compaction mid brown sandy silt with some angular stone inclusions. 0.3m width, 0.4m depth.	Avenue post [024] Lower postpipe fill.
073	F	Medium compaction mid brown sandy-silt with some angular stone inclusions	Avenue post [024] Lower postpipe fill.
074	F	Loose mid brown gravel with some larger angular stone inclusions (max 0.2m). 1m x 0.05m depth.	Avenue post [024]. Base fill.
075	F	Loosely compacted dark brown silty-gravel, with varying angular stone inclusions. 0.9m length, 0.8m wide (approx), up to 0.2m depth.	Avenue post [024]. Ramp fill
076	C	Large sub-circular cut. No ramp evident in plan. Steep sides, 1.8m E-W, 1.5m N-S, 1.15m depth (but not bottomed due to water table).	Avenue Post. Fills 77, 85, 180.
077	F	Below fill 108, increased gravel content. Mid brown silty gravel with frequent small pebbles, pea gravel. 0.6m max depth.	Avenue Post [076] slumped fill
078	C	Oval cut (NW-SE) with irregular bottom, deeper at north-west end. 1m x 0.74m, 0.25m depth.	Oval Pit, fills 082, 084
079	C	Irregular oval/circular in plan but irregular sides and slopes. Shallower on west side, sloping to deeper bottom on east side. 1.9m across, 0.33m depth at max.	Tree Throw, fills 080, 081
080	F	Medium compaction dark brown silty clay, with angular stones up to 0.15m, pea gravel, small pebbles. 1.1m across (NE-SW), 0.28m max depth.	Tree Throw [079] fill
081	F	Quite compact dark brown silty clay, with angular stones up to 0.15m, pea gravel, small pebbles. 1.8m NE-SW, 0.33m max depth.	Tree Throw [079] fill
082	F	Medium compaction dark blackish brown silt, pebble inclusions. 0.44m, 0.19m depth.	Oval pit [078] upper fill
083	C	Oval banana shape, U-shaped profile. Steeper west slope, shallower E slope. N-S. 2.8m x 0.9m x 0.42m depth.	Northern and larger 'banana of tree throw. Fill 142. Southern = [161], 162
084	F	Medium compaction dark brown silty loam, pebbles, pea gravel. 1m x 0.74m, 0.25m depth.	Oval pit [078] lower fill
085	F	Dark brown silty loam with infrequent pebble inclusions. 1m diameter, 0.45m depth.	Avenue Post [076] possible post-pipe.
086	C	Oval/oblong (NW-SE) U-shaped cut with flat base. 0.6m x 1m by 0.3m depth.	Oval pit, fill 087
087	F	Moderate compaction dark brown silty clay, pebbles clay. 1m x 0.6m by 0.3m depth.	Oval pit [086] single fill
088	C	Banana shaped, U-shaped profile with near vertical sides, irregular bottom. 1.4m length, 0.4m wide. NNE-SSW	Tree throw, fill 089
089	F	Moderate compaction medium brown silty clay with blackish brown patches, frequent small pebbles.	Tree throw [088] fill
090	C	Irregular figure of eight shaped feature (N-S), flat-	Part of oval pit group? Fill

		bottomed, U-shaped. 1.42m x 0.82m, 0.22m depth.	091
091	F	Moderate compaction dark brown sandy silt, with pebbles, pea gravel. 1.42m x 0.82m x 0.22m depth.	Part of oval pit group? [090]
092	C	?Circular in plan, bowl shaped profile, steep sides and irregular bottom. 1.45m N-S, 0.32m depth.	Pit in E baulk, fill 093
093	F	Moderate dark brown silt with small pebbles. 1.45m N-S, 0.32m depth	Pit in E baulk [092].
094		Non-Archaeological	
095		Non-Archaeological	
096		Non-Archaeological	
097	F	Loose mid brown silty loam, small pebbles (max 0.1m). 0.6m wide.	Avenue post [037] fill
098	F	Loose mid brown silt with pea gravel, angular stones (max 0.18m).	Avenue post [037] fill. Packing material
099	F	Loose light-brown orange silt, pea gravel, pebbles (max 0.04m).	Avenue post [037] fill, basal fill
100	F	Loose mid brown silt, with numerous pebbles (max 0.09m).	Avenue post [037] fill
101	C	Oval, U-shaped profile, steep sides, 0.9m NW-SE, 0.5m wide, 0.28m depth.	Oval pit, fill 102
102	F	Moderate compaction brownish red silt with small pebbles (max 0.12m) and pea gravel. 0.9m by 0.5m by 0.28m depth.	Oval pit [101]
103	F	Medium compaction dark black / grey silt, with large amount of charcoal > 60%.	Major charcoal layer in Avenue post [031]
104	F	Loose dark brown silty sand, charcoal flecks, approx circular in plan within fill 113. Width max 0.4m, depth max 0.15m.	Tree throw [107] northern banana silt fill.
105	F	Loose mid brown silty gravel, frequent pebbles (max 0.1m). 2m E-W max, 0.4m depth.	Tree throw [107] fill.
106	F	Loose dark brown silty gravel, occasional pebbles (max 0.05m). 0.48m E-W, 0.04-0.08m depth.	Tree throw [107] southern banana silt fill.
107	C	Oval in plan with two 'banana' shaped bands of silt with lighter gravel centre. Uncertain profile. Max 2m E-W, uncertain depth, but at least 0.2m.	Tree throw, fills 104, 105, 106
108	F	Angular stone max 0.15m	Avenue Post [076] ?collapsed packing.
109	C	Circular cut, u-shaped profile. 0.5m x 0.35m with max depth 0.27m.	?Small posthole next to Avenue post [041]. Fill 111
110	C	Curvilinear, ?banana shaped, U-shaped profile with near vertical sides. ?1.55m SE-NW (may extend further to west), 0.75m wide, 0.25m depth.	Possible tree throw- only banana visible, fill 141
111	F	Loose light brown sandy silt, small pebbles and larger angular cobbles (max 0.13m).	?Small posthole [109] fill next to Avenue post [041].
112	F	Loose yellow-brown sandy silt, flecks of charcoal. Not in section drawings.	Ramp fill of Avenue post [031].
113		Non-Archaeological	
114	C	Irregular ovoid, U-Shaped. Steep sides, irregular base. 0.72m, 0.4m, 0.15m depth, NE-SW.	Small pit in line with E-side of avenue. Fill 115
115	F	Medium compaction mid brown silt, small stones, charcoal. 0.72m, 0.4m, 0.15m depth.	Small pit [114] in line with E-side of avenue fill
116	C	Sub oval shallow bowl, gentle slopes, 0.5 n-S by 0.3m, 0.05m depth.	Heavily truncated small pit with burnt material, fill 117
117	F	Medium compaction dark brown silt, with large amounts of charcoal, small pebbles and pea gravel.	Heavily truncated small pit with burnt material
118	F	Charcoal deposits with small percentage of dark silt.	Charcoal deposits towards base of Avenue post [031].
119	F	Loose light white sandy silt. Not in section drawings.	Fill of Avenue post [031].
120	F	Loose mid brown silty gravel, with infrequent pebble inclusions (max 0.025m). Below fill 027.	Lower fill of indeterminate cut feature within Avenue area [028]
121	F	Compact dark grey silt, small flecks of charcoal.	Slumping layer at east side of Avenue post [031].
122	F	Avenue posthole burnt post	
123	C	Oval, U-shaped profile, 0.95 x 0.7 x 0.31 depth. NNE-SSW.	Oval pit on line of Avenue (E-side), fill 124.
124	F	Moderate compaction dark brown silt with pebbles.	Oval pit [123] on line of Avenue (E-side).
125	C	Sub circular, U-shaped profile, 75° sloping sides. 1.35m E-W, 1.32m N-S, 0.62m depth.	Avenue post. Fills 126, 150, 163, 164
126	F	Loose dark orangey-brown sandy silt, infrequent pebbles, charcoal flecks and larger stones (max 0.2m). 1.1m, 0.25m depth. Merges with silt 002 at top. Cremated bone.	Avenue post [125] upper fill. Post-pipe.

127	C	Circular bowl shaped cut with steep sides. 0.75m by 0.7m by 0.28m depth. NE-SW.	Pit in trench extension. Fills 128, 183
128	F	Compact dark brown silt, stones.	Pit [127].
129		Non-Archaeological	
130		Non-Archaeological	
131	F	Moderate compaction medium orangey-brown silty gravel, with small rounded stone (max 0.03m) and pea gravel. Around base and sides of feature.	Basal fill of oval pit / tree throw banana
132	C	Sub-circular feature with ramp. U-shaped profile. 2.23m by 1.43m by 0.7m depth. ENE-WSW.	Avenue post, fills 133, 137, 157.
133	F	Mid compaction dark greyish brown silt, charcoal angular stones (0.15 max). Fire-cracked stones.	Avenue post [132] upper fill.
134	C	Oval, U-shaped profile sloping sides with irregular bottom. 0.27m E-W, 0.22 N-S, 0.18m depth.	Truncated pit, fill 135
135	F	Moderate compaction mid brown silty gravel. 0.27m E-W, 0.22 N-S, 0.18m depth	Truncated pit [134], fill
136	C	Su-circular bowl shaped with flat bottom. 0.39m x 0.31m by 0.18m depth. E-W.	Truncated pit, fill 137
137	F	Moderate compaction mid brown silty gravel, pebbles (max 0.15m). 0.39m x 0.31m by 0.18m depth.	Truncated pit [136], fill
138	C	Linear cut feature with dog-leg in centre. 0.4m width, at least 1.4m long, max depth 0.12m. E-W on west side ESE-WNW on east side. Shallow sloping cut, irregular stony bottom. Edges indistinct in plan. Cut by [005]	Possible slot feature within Avenue. Fill 167.
139	C	Round in plan (uncertain ramp location). U-shaped (though not bottomed due to water-logging). Steep sides. 1.45m E-W, at least 0.9m depth. Orientation probably NW-SE.	Avenue post with removed post- disturbed packing. Fills 140, 166.
140	F	Medium compaction mid brown silt- see drawing 83.	Compact silty fill at side of posthole- original fill, prior to 166 removed post fill? Avenue post [139]
141	F	Compact in centre, looser at edges. Dark brown silt. 1.05m E-W, 0.6m wide, 0.25m depth.	Tree throw banana [110] fill
142	F	Medium compaction dark brown silt (lighter towards bottom of fill). Frequent charcoal inclusions, stones (max 0.2m). 1.8m x 1.1m x 0.45m depth.	Fill of tree throw banana [083]
143	C	Oval / banana shaped feature with a U-shaped profile. 1.4m by 0.3m by 0.3m depth. N-S.	Possible tree throw, fill 144.
144	F	Loose greyish brown silty gravel, pebbles, larger stones (max 0.24m).	Possible tree throw [143]
145	F	Friable dark brown medium sand, charcoal , infrequent rounded pebbles.	Avenue post [132]. Charcoal dump?
146	C	Circular with steep sides, flat bottom. NW-Se – 1.09m, 1.31m E-W, depth 0.63m.	Avenue post, fills 147, 170
147	F	Loose mid brown sandy silt, small stones (0.03m max). 0.63m depth.	Avenue post [146] lower fill.
148	C	Round, asymmetrical profile, gently sloping on west, sharper slope on east, flat bottom. 0.8m by 0.84m by 0.35m depth.	Possible posthole / stone filled pit within avenue. Fills 049, 168.
149	F	Moderately compact dark orangey brown silt, with very stony fill (max 0.12m). 0.35m depth.	Upper fill of [148].
150	F	Loose dark black-brown silt with frequent substantial charcoal inclusions (up to 0.05m diameter). 0.35m by 0.35m depth.	Avenue post [125] lower fill.
151	C	Curvilinear (banana) shaped feature 1.5m long, c.1m wide, 0.5m deep. Steep sides, flat base. NE orientation.	Possible tree throw cut by Avenue Post [076]. Fills 154, 181.
152	C	Round shallow bowl shaped cut with steep sides sloping sharply to round bottom. 0.48m N-S, 0.46m E-W, 0.14m depth.	Small pit / truncated posthole within avenue. Fill 153
153	F	Very compact silty clay with c.50% pebbles. Dark brown. 0.48m N-S, 0.46m E-W, 0.14m depth.	Stony fill of small pit [152].
154	F	Mid compaction light brownny-orange sandy silt, with angular stones (max 0.15m), 0.3m depth, 0.9m width.	Fill of tree throw [151].
155		See 170	
156	F	Friable mid to dark brown silt, charcoal inclusions. Small fill 0.035m diameter.	Truncated pit [047] in line with E side of avenue.
157	F	Stone	Very large stone in Avenue post [132]. Similar to unexcavated Avenue post [035] stone
158		Non-Archaeological	
159	F	Loose grey / yellow silt, small stones / pebbles. Large	Major charcoal layer in base

		percentage of charcoal.	of Avenue post [031].
160	F	Loose grey / yellow sandy-silt.	Basal fill of Avenue post [031]
161	C	Oval / banana shaped feature, U-shaped profile. 0.4m x 0.35m by 0.2m depth. N-S.	Southern 'banana' of tree throw – See also [083]. Fill 162
162	F	Medium compaction dark brown silt, sub-angular stones. 0.4 x 0.35 x 0.2m depth.	Fill of southern banana tree throw [161].
163	F	Moderately compact dark chocolate brown silt with charcoal flecks. 0.6m by 0.3m depth.	Avenue post [125] mid fill. Post-pipe.
164	F	Moderately compact orangy dark tan silt with charcoal flecks and large stones (max 0.2m) 0.5m by 0.55 depth.	Avenue post [125] packing and fill.
165		See 034	
166	F	Very loose voided stony fill. Mid to dark brown silt, but in places little soil, mostly stone. Large ?packing stones (collapsed)- up to 0.4m, angular and smaller rounded stones. Cremated bone throughout.	Rapid backfill after removal of post- with cremated bone deposits. Avenue post [139].
167	F	Compact greasy light brown/yellow silty sand with infrequent pebble inclusions.	Fill of possible slot feature [138] in Avenue
168	F	Very compact light orange brown silt with stony fill (max 0.09m). 0.15m depth.	Lower fill of [148].
169	F	Loose dark brown silt, stones. 1.2m by 0.9m	Avenue Post [041] Post-pipe.
170	F	Loose dark brown silt, stones (max 0.1m). Width 0.66m, depth 0.53m.	Avenue post [146] Upper fill.
171	C	See day book	Furrow
172	F	See day book	Furrow
173	C	Oval, bowl-shaped with flat bottom. 0.9m by c.0.4m by 0.18m depth. NW-SE.	Oval pit, fill 174
174	F	Medium compaction mid brown silty-sand with small stones.	Oval pit [173] single fill.
175	F	Loose light yellow-grey silty sand, frequent stones (max 0.23m). 0.7m NE-SW, 0.91m NW-SE, depth 0.57m.	Avenue Post [043] Ramp fill.
176	F	Medium to loose compaction mottled black / dark grey sandy-silt, charcoal flecks, sub-angular stones (max 0.2m). 1.15m NE-SW, 1.14m NW-SE, 0.4m depth.	Avenue Post [043] Post-pipe?
177	F	Loose dark grey to brown-black wet clayey silt with coarse sand and gravel, frequent gravel inclusions, charcoal. 0.8m SW-NE, 0.84m NW-SE, 0.3m depth.	Basal layer of Avenue Post [043].
178	C	Irregular circular shape with extension. Unexcavated, byt 1.3m max diameter, orientation NW-SE	Avenue post with ramp. Fill 179. Unexcavated.
179	F	Dark brown silty loam	Unexcavated Avenue Post [179] fill.
180	F	Light to mid brown silty gravel, wet and greasy, with frequent large rounded pebbles (max 0.1m). 1.1m diameter, max 0.5m depth.	Primary fill of Avenue Post [076].
181	F	Very compact dark brown silt, small stones (max 0.06m). 0.1m depth, 0.2m width.	Upper fill of tree throw [151].
182	F	Angular and rounded stones, max 0.26m length, 0.16m thickness	Avenue Post [041] packing stones.
183	F	Loose dark brown to light brown gravel with frequent pebbles (max 0.05m). Max depth 0.18m	Primary fill of cut feature [127].
184	C	Amorphous oval cut feature with bowl-shaped profile, deeper on west side. 0.8m E-W, 1.48m N-S, 0.14-0.24m depth.	Oval pit / tree throw. Fills 185, 186
185	F	Very compact light brown-yellow silty sand, very clean fill, very few stone inclusions. West side of feature, max 0.5m wide.	Oval pit / tree throw [184] fill.
186	F	Compact yellow to light brown silty gravel with frequent small pebble inclusions (max 0.03m). East side of feature. Max 0.3m width.	Primary fill of Oval pit / tree throw [184].
187	C	Unexcavated Avenue post- south of 139	
188	C	Unexcavated Avenue post- south of 125	
189	C	Possible tree throw within silt	

ii) Small Finds

No.	Context	Area	Feature type	Material	Description	Date
001	002		silt layer	lithic	possible pitchstone flake	09/08/2007
002	067		ramp of posthole	lithic	unworked	09/08/2007
003	002		silt layer	ceramic	modern glazed	09/08/2007

004	018	C1	field drain	ceramic	field drain fragment	10/08/2007
005		D	posthole fill	lithic	possible quartz?	12/08/2007
006	002	H	silt layer	ceramic	daub	15/08/2007
007	089	E2	pit fill	stone	worked	15/08/2007
008	067	C4	posthole fill	stone	possible coarse tool	15/08/2007
009	032	C4	pit fill	lithic	agate	16/08/2007
010	002		silt layer	ceramic	daub	18/08/2007
011	105	A2/A4	tree throw	stone	possible stone axe roughout	18/08/2007
012	002		silt layer	ceramic	daub/pottery	18/08/2007
013	105	A2/A4	tree throw	lithic	possible worked agate	19/08/2007
014	140		avenue posthole fill	ceramic	possible fragment of pottery	19/08/2007
015	121	C2	posthole fill	charcoal	charcoal (hand collected)	21/08/2007
016	121	C2	posthole fill	charcoal	charcoal (hand collected)	21/08/2007
017	121	C2	posthole fill	charcoal	charcoal (hand collected)	21/08/2007
018	002	E1	silt layer	lithic	fragment	22/08/2007
019	159	C2	posthole fill	stone	possible fire cracked stone	22/08/2007
020	112		avenue posthole fill	charcoal	charcoal (hand collected)	22/08/2007

iii) Drawings

FN07/ No.	Type	Scale	Description	Name
01	P	1:20	Pre-excavation plan of area I1 and I2	IH
02	P	1:20	Pre-excavation plan of area I3 and I4	IH
03	P	1:20	Pre-excavation plan of area J1 and J2	IH
04	P	1:20	Pre-excavation plan of area J3 and J4	IH
05	P	1:20	Pre-excavation plan of area K1 and K2	IH
06	P	1:20	Pre-excavation plan of area K3 and K4	IH
07	P	1:20	Pre-excavation plan of area L1 and L2	IH
08	P	1:20	Pre-excavation plan of area L4	IH
09	P	1:20	Pre-excavation plan of area B1	KMI
10	P	1:20	Pre-excavation plan of area B2	SR
11	P	1:20	Pre-excavation plan of area B3	SR
12	P	1:20	Pre-excavation plan of area B4	KMI
13	S	1:10	N facing section of feature 011	MGB
14	S	1:10	E facing section of features 019, 020	MGN
15	S	1:10	E facing section of posthole 023	AM
16	S	1:10	E facing section of 'pyre' 005	TF
17	P	1:20	Pre-excavation plan of area D	AW
18	P	1:20	Pre-excavation plan of area C3 and C4	AW
19	P	1:20	Pre-excavation plan of area C1 and C2	AW
20	S	1:10	N facing section of posthole 024	TCR
21	P	1:20	Pre-excavation plan of area A3	KMAC
22	P	1:20	Pre-excavation plan of area E3	KMAC

23	S	1:10	S facing section of feature 054	MGN
24	S	1:10	E facing section of posthole 022	RF
25	S	1:10	S facing section of posthole 007	TC
26	P	1:20	Pre-excavation plan of area E2	KMAC
27	P	1:20	Pre-excavation plan of area A1	GM
28	P	1:20	Pre-excavation plan of area A2	GM
29	P	1:20	Pre-excavation plan of area A4	GM
30	P	1:20	Pre-excavation plan of area E 1	MG
31	P	1:20	Pre-excavation plan of area E4	KMAC
32	S	1:10	N facing section of feature 079	JM
33	S	1:10	SW facing section of feature 078	GM
34	S	1:10	E facing section of posthole 037	AA
35	P	1:20	Stone packing 108 within posthole 076	AM
36	S	1:10	SE facing section of feature 086	FMP
37	S	1:10	SW facing section of feature 062	EM
38	S	1:10	N facing section of feature 047	RC
39	S	1:10	N facing section of feature 039	FMP
40	S	1:10	E facing section of feature 090	GM
41	S	1:10	SE facing section of feature 101	JR
42	S	1:10	S facing section of feature 028	KB
43	P	1:20	Post-excavation plan of area D2	GM
44	S	1:10	NW facing section of feature 045	LS
45	P	1:20	Post-excavation plan of area C2	GM
46	P	1:20	Post-excavation plan of area D1	KB
47	P	1:20	Pre-excavation plan of trench extension	KB
48	S	1:10	E facing section of feature 116	AnG
49	P	1:20	Post-excavation plan of area C1	GM
50	S	1:10	Various sections through posthole 031	PG
51	S	1:10	SSE facing section of postholes 041, 109	SM
52	S	1:10	SE facing section of feature 123	KMI
53	S	1:10	SSW facing section of tree throw 088	SW
54	S	1:10	E facing section of feature 136	Kate
55	S	1:10	NE facing section of feature 134	RS
56	S	1:10	W facing section of feature 092	CML
57	P	1:20	Post-excavation plan of area	GM
58	S	1:10	W facing section of feature 143	HS
59	S	1:10	WSW facing section of slot 138	AW
60	P	1:20	Post-excavation plan of area	GM
61	P	1:20	Post-excavation plan of area	GM
62	P	1:50	Pre-excavation master plan	GN / AW
63	P	1:50	Post-excavation master plan	GM
64	S	1:10	NW facing box section of tree throw 104	KM
65	S	1:10	N facing section of posthole 013	KM
66	S	1:10	W facing section of feature 152	GN
67	P	1:20	Post-excavation plan of area I1	AS
68	P	1:20	Post-excavation plan of area I2	AS
69	S	1:10	E facing section of tree throw 110	JM
70	S	1:10	SW facing section of feature 114	KMAC
71	S	1:10	W facing section of posthole 125	SR
72	P	1:20	Post-excavation plan of area K	KB
73	S	1:10	E facing section of postholes 031, 033	PG
74	S	1:10	E facing section of posthole 132	CMK

75	P	1:20	Post-excavation plan of area C3	GM
76	P	1:20	Post-excavation plan of area B4	GM
77	P	1:20	Post-excavation plan of area A4	GM
78	P	1:20	Post-excavation plan of area J	GM
79	S	1:10	W facing section of posthole 146	KMAC
80	S	1:10	S facing section of feature 148	SR
81	P	1:20	Post-excavation plan of area A3	GM
82	S	1:10	NW facing section of posthole 043	RY
83	P	1:20	Working plan of postpipe in cut 139	GN
84	P	1:20	Post-excavation plan of area C2	GM
85	S	1:10	NW facing section of feature 127	IH
86	S	1:10	SW facing section of feature 171	PG
87	S	1:10	SE facing section of tree throw 083, 061	AG
88	S	1:10	S facing section of tree throw 088	KM

iv) Samples

No.	Context	No/Bag size (s/m/l)	Size (L)	Reason for sampling	Interpretation of feature
001	004	6/l	40	charcoal rich fill: identification and radiocarbon dating	pyre material / in situ burning?
002	014	1/l	7	charcoal flecks in fill: identification and radiocarbon dating	fill of post-hole
003	004	box		large lumps of charcoal in layer: identification and radiocarbon dating	pyre material / in situ burning?
004	044	1/s	<1	burnt bone: human or animal?: identification and radiocarbon dating	dark silt deposit
005	044	1/s	<1	burnt bone: human or animal?: identification and radiocarbon dating	dark silt deposit
006	008	1/m	2	identification of material and radiocarbon dating	fill of small feature outwith avenue
007	027	1/m	2	identification of material and radiocarbon dating	fill of small feature within avenue
008	065	1/m	2	identification of material and radiocarbon dating	clay/till in ramp area of post-hole 007
009	050	1/m	2	charcoal rich layer: identification of material and radiocarbon dating	charcoal layer in post pipe
010	061	1/l	7	identification of material and radiocarbon dating	fill of pit 054 outwith avenue
011	053	1/l	7	identification of material and radiocarbon dating	fill of pit 054 outwith avenue
012	006	1/m	2	identification of material and radiocarbon dating	upper fill of post-hole 007
013		auger	auger	identification of material and radiocarbon dating	lower fill of post-hole
014	051	1/l	7	identification of material and radiocarbon dating	fill near base of 023
015	064	1/s	<1	identification of material and radiocarbon dating	fill of pit
016	040	1/l	7	identification of material and radiocarbon dating	layer in post-pipe of avenue post
017	000	2/l	14	identification of material and radiocarbon dating	layer in post-pipe of avenue post
018	063	2/l	14	identification of material and radiocarbon dating	fill of feature E of avenue
019	071	1/l	7	identification of material and radiocarbon dating	fill of post-pipe

020	034	1/s	<1	identification of material and radiocarbon dating	fill of small feature W of avenue
021	066	1/l	7	identification of material and radiocarbon dating	post-pipe of avenue post
022	067	1/l	7	identification of material and radiocarbon dating	matrix of post-pipe packing of avenue post
023	021	1/l	7	identification of material and radiocarbon dating	post-pipe of avenue post
024	075	1/l	7	identification of material and radiocarbon dating	layer of ramp to post-hole
025	057	1/l	7	identification of material and radiocarbon dating	fill of avenue post-hole
026	085	1/l	7	identification of material and radiocarbon dating	post-pipe of E avenue post
027	089	1/m	2	identification of material and radiocarbon dating	dark material from possible tree throw
028	059	1/m	2	identification of material and radiocarbon dating	fill of avenue post-hole
029	055	1/m	2	identification of material and radiocarbon dating	fill of avenue post-hole
030	070	1/m	2	identification of material and radiocarbon dating	lower fill of avenue post-hole
031	069	1/l	7	identification of material and radiocarbon dating	fill of avenue post-hole
032	096	1/l	7	identification of material and radiocarbon dating	fill of tree throw
033	058	1/m	2	identification of material and radiocarbon dating	fill of avenue post-hole
034	056	1/l	7	identification of material and radiocarbon dating	fill of avenue post-hole
035	087	1/s	<1	identification of material and radiocarbon dating	fill of feature E of avenue
036	001	1/l	7	identification of material and radiocarbon dating	fill of possible tree throw
037	080	1/l	7	identification of material and radiocarbon dating	fill of possible tree throw
038	102	2/l	14	identification of material and radiocarbon dating	fill of oval pit W of avenue
039	038	1/l	7	identification of material and radiocarbon dating	fill of post-pipe of avenue post
040	093	1/m	2	identification of material and radiocarbon dating	fill of feature 092
041	046	1/l	7	identification of material and radiocarbon dating	fill of oval feature in NW corner of trench
042	117	1/m	2	identification of material and radiocarbon dating	fill of oval feature with charcoal
043	113	1/l	7	identification of material and radiocarbon dating	fill of possible tree throw
044	044	1/l	7	identification of material and radiocarbon dating	fill of 043, possible post-hole
045	156	1/s	<1	identification of material and radiocarbon dating	fill of cut feature
046	143	1/l	7	identification of material and radiocarbon dating	fill of tree throw
047	042	1/m	2	identification of material and radiocarbon dating	fill of W avenue post-hole
048	042	1/s	<1	identification of material and radiocarbon dating	fill of W avenue post-hole
049	042	1/s	<1	identification of material and radiocarbon dating	fill of W avenue post-hole

050	103	2/l	14	identification of material and radiocarbon dating	fill of W avenue post-hole
051	118	1/s	<1	identification of material and radiocarbon dating	fill of avenue post-hole 031
052	106			identification of material and radiocarbon dating	silty fill of possible tree throw
053	032	1/m	2	identification of material and radiocarbon dating	upper fill of post-hole
054	133	1/m	2	identification of material and radiocarbon dating	upper fill of large avenue post-hole
055	153	1/s	<1	identification of material and radiocarbon dating	fill of feature within avenue, sector F
056	154	1/l	7	identification of material and radiocarbon dating	linear feature in E avenue
057	155	1/l	7	identification of material and radiocarbon dating	charcoal (upper) fill of E avenue post-hole
058	150	1/l	7	identification of material and radiocarbon dating	fill of E avenue post-hole
059	126	1/l	7	identification of material and radiocarbon dating	fill of E avenue post-hole
060	149	1/l	7	identification of material and radiocarbon dating	fill of feature 148 with charcoal
061	121	1/m	2	identification of material and radiocarbon dating	fill of avenue post-hole
062	060	1/m	2	identification of material and radiocarbon dating	ramp fill of avenue post-hole
063	115	1/l	7	identification of material and radiocarbon dating	feature at E side of avenue
064	145	1/l	7	identification of material and radiocarbon dating	fill of avenue post-hole
065	158	1/l	7	identification of material and radiocarbon dating	fill of tree throw 083
066	159	1/m	2	identification of material and radiocarbon dating	fill of post-hole 031
067	162	1/l	7	identification of material and radiocarbon dating	fill of tree throw 161
068	140	1/m	2	identification of material and radiocarbon dating	lower fill of avenue post-hole 139
069	002	1/m	2	identification of material and radiocarbon dating	silt layer/ possible palaeochannel
070	077	1/s	<1	identification of material and radiocarbon dating	middle fill of avenue post-hole
071	167	1/m	2	identification of material and radiocarbon dating	fill of slot in S side of avenue

v) Photos

Digital:

FN07 _no.j pg	Subject	From	Date	Taken
001	General view of excavations	SW	9 th Aug	KB
002	Pre-excavation features 005 & 007	N	9 th Aug	KB
003	Pre-excavation posthole 013	NE	9 th Aug	KB
004	Charcoal rich fill 004 during excavation	E	9 th Aug	KB
005	Charcoal rich fill 004 during excavation (close-up)	E	9 th Aug	KB
006	N facing section of feature 011	N	10 th Aug	MGB
007	Detail of burnt timber (S003) within fill 004	E	10 th Aug	TF

008	Pre-excavation posthole 022	W	10 th Aug	KB
009	E facing section of features 018 & 019	E	10 th Aug	MGN
010	E facing section of posthole 023	E	10 th Aug	KB
011	Work on postholes 007, 024 & 025	W	10 th Aug	GN
012	Work on posthole 007	WSW	10 th Aug	GN
013	Pre-excavation feature 028	S	11 th Aug	KB
014	Pre-excavation tree throw 083	N	12 th Aug	KB
015	E facing section of 'pyre' feature 005	E	12 th Aug	GN
016	Pre-excavation postholes 031 & 032	NE	12 th Aug	KB
017	General excavation shot	NW	12 th Aug	KB
018	Pre-excavation posthole 037	W	12 th Aug	KB
019	Pre-excavation feature 039	N	12 th Aug	KB
020	Pre-excavation posthole 041	E	12 th Aug	KB
021	GM planning		12 th Aug	KB
022	Sieving device in action (operated by RC)		12 th Aug	KB
023	General view along W side of avenue during excavations	S	12 th Aug	KB
024	GN and Tasmin in posthole 007		12 th Aug	KB
025	S facing section of posthole 007	S	12 th Aug	GN
026	S facing section of posthole 007	S	12 th Aug	GN
027	Pre-excavation posthole 035	W	12 th Aug	GN
028	N facing section of posthole 024	N	12 th Aug	TCR
029	N facing section of posthole 024	N	12 th Aug	TCR
030	General view of silt spread 002	N	14 th Aug	KB
031	Pre-excavation feature 045	SE	14 th Aug	KB
032	Pre-excavation feature 047	NW	14 th Aug	KB
033	General excavation view	NW	14 th Aug	KB
034	S facing section of feature 054	S	14 th Aug	MGN
035	KB & STV journalist		14 th Aug	GN
036	MGoN & RF discussing posthole		14 th Aug	GN
037	STV camera person filming ST digging		14 th Aug	GN
038	TC & SM drawing section (posthole 007)		14 th Aug	GN
039	General excavation view		14 th Aug	GN
040	KMac planning		14 th Aug	GN
041	KB being interviewed		14 th Aug	GN
042	GN being interviewed		14 th Aug	KB
043	N facing section of feature 039	N	14 th Aug	FMP
044	S facing section of posthole 007	S	14 th Aug	TC
045	Pre-excavation feature 062	S	14 th Aug	KB
046	Fill 064 in situ in base of posthole 023	W	14 th Aug	KB
047	Fill 064 in situ in base of posthole 023	W	14 th Aug	KB
048	Working shot of excavations of N half of posthole 007	W	14 th Aug	TC
049	N facing section of posthole 013	N	15 th Aug	KB
050	Pre-excavation posthole 076	N	15 th Aug	KB
051	NW facing section of feature 079	NW	15 th Aug	JM
052	NW facing section of feature 047	NW	15 th Aug	KB
053	E facing section of posthole 022	E	15 th Aug	KB
054	W facing section of feature 062	W	15 th Aug	EM
055	Post-excavation posthole 023	S	15 th Aug	KB
056	E facing section posthole 037	E	15 th Aug	KB
057	SW facing section of feature 078	SW	15 th Aug	GM
058	General view along avenue during excavations	N	16 th Aug	KB
059	General view along avenue during excavations	N	16 th Aug	KB

060	SM using level		16 th Aug	KB
061	Pre-excavation tree throw 107	SW	16 th Aug	MGN
062	Pre-excavation postholes 041 & 109	NW	16 th Aug	KB
063	AM planning		16 th Aug	KB
064	SW facing section of feature 062	SW	16 th Aug	EM
065	DW supervising AM		16 th Aug	KB
066	Pre-excavation tree throw 088	N	16 th Aug	KB
067	In situ packing stones 108 within posthole 076	N	16 th Aug	KB
068	Post-excavation feature 062	E	15 th Aug	EM
069	Pre-excavation feature 086	N	16 th Aug	KB
070	Pre-excavation feature 090	S	16 th Aug	GN
071	Pre excavation feature 092	W	16 th Aug	GN
072	Pre-excavation tree throw 094	NW	16 th Aug	GN
073	Pre excavation feature 101	SE	16 th Aug	GN
074	SE facing section of feature 086	SE	16 th Aug	GN
075	E facing section of feature 090	E	17 th Aug	KB
076	E facing section of feature 090	E	17 th Aug	GM
077	Pre-excavation posthole 043	SW	17 th Aug	RY
078	Pre-excavation feature 110	NW	17 th Aug	KB
079	SE facing section of feature 101	SE	17 th Aug	KB
080	Post-excavation feature 086	SE	17 th Aug	FMP
081	Cremated bone in situ within upper fill 044 of posthole 044	N	17 th Aug	RY
082	Pre-excavation feature 114	NE	17 th Aug	GN
083	S facing section of feature 028	S	17 th Aug	KB
084	E facing section of tree throw 110	E	17 th Aug	KB
085	Burnt post in situ, lower fill 122, posthole 031	S	17 th Aug	KB
086	Burnt post in situ, lower fill 122, posthole 031	S	17 th Aug	GN
087	Pre-excavation feature 123	E	18 th Aug	GN
088	Pre-excavation posthole 125	WSW	18 th Aug	GN
089	W facing section of feature 092	W	18 th Aug	CML
090	E facing section of feature 116	E	18 th Aug	AG
091	SW facing section of feature with cut 114	SW	18 th Aug	GN
092	KB holding staff in posthole 007		18 th Aug	GN
093	Pre-excavation feature 127	NW	18 th Aug	KB
094	Students planning posthole 007		18 th Aug	KB
095	SE facing section of feature 123	SE	19 th Aug	KM
096	DW holding 'post' on open day	N	19 th Aug	GN
097	DW holding 'post' on open day	N	19 th Aug	GN
098	Pre-excavation posthole 132	E	19 th Aug	CMK
099	Pre-excavation slot feature 138	E	19 th Aug	AW
100	Pre-excavation posthole 139	W	19 th Aug	AS
101	Open day visitors		19 th Aug	KB
102	Open day visitors		19 th Aug	KB
103	WNW facing section of slot feature 138	WNW	19 th Aug	AW
104	W facing section of feature 143	W	19 th Aug	HS
105	E facing section of feature 136	E	19 th Aug	GN
106	NE facing section of feature 134	NE	19 th Aug	GN
107	Waterlogged posthole 076 during excavation	NNW	19 th Aug	KB
108	General view of DW and students		19 th Aug	GN
109	General view of excavations and planning		19 th Aug	GN
110	DW		19 th Aug	GN
111	GN		19 th Aug	KB

112	Pre-excavation posthole 146	W	21 st Aug	KM
113	Pre-excavation feature 148	W	21 st Aug	DM
114	Pre-excavation feature 152	NNE	21 st Aug	KB
115	Pre-excavation feature 152	W	21 st Aug	KB
116	W facing section of feature 152	W	21 st Aug	GN
117	Work on features at the N end of the W avenue	N	21 st Aug	GN
118	KB		21 st Aug	GN
119	NW facing section of box through tree throw 107	NW	21 st Aug	KB
120	Working shot of burnt material 121 in base of posthole 031	SE	21 st Aug	GN
121	Working shot of burnt material 150 near base of posthole 148	W	21 st Aug	GN
122	Working shot of large stones within feature 151	NE	21 st Aug	KB
123	General excavation shot		21 st Aug	KB
124	Large stone 157 in situ in posthole 132	N	22nd Aug	KB
125	Large stone 157 in situ in posthole 132	N	22nd Aug	KB
126	View towards ridge to the S of the cropmarks	N	23 rd Aug	KB
127	General view of trench location with Dronachy Ridge in the background	N	23 rd Aug	KB
128	W facing section of posthole 125	W	23 rd Aug	KB
129	E facing section of postholes 031 & 033	E	23 rd Aug	KB
130	Post-excavation posthole 007	N	23 rd Aug	KB
131	Post-excavation posthole 022	NW	23 rd Aug	KB
132	Post-excavation posthole 013	W	23 rd Aug	KB
133	Post-excavation group of features 023, 134, 136	NE	23 rd Aug	KB
134	Working shot of tree throw 083 during excavation	SE	23 rd Aug	AG
135	Cremated bone in situ, in posthole 139	N	23 rd Aug	GN
136	Working shot of N facing section, posthole 139	N	23 rd Aug	GN
137	Working shot, posthole 139, showing collapsed postpipe	W	23 rd Aug	GN
138	E facing section of features 138 & 005	E	24 th Aug	KB
139	E facing section of posthole 132	E	24 th Aug	CMK
140	Postpipe in plan within posthole 139	N	24 th Aug	KB
141	Postpipe in plan within posthole 139	N	24 th Aug	KB
142	SW facing section of feature 148	SW	24 th Aug	SR
143	Collapsed seive machine		24 th Aug	GN
144	GN		24 th Aug	KB
145	Digging below the water table in posthole with cut 139		24 th Aug	KB
146	KB drawing section		25 th Aug	GN
147	KB drawing section in flooded feature		25 th Aug	GN
148	N facing section of posthole 139	N	25 th Aug	GN
149	N facing section of posthole 139	N	25 th Aug	GN
150	NW facing section of posthole 043	NW	25 th Aug	RY
151	W facing section of posthole 146	W	25 th Aug	KM
152	Post-excavation feature 101	NE	25 th Aug	GN
153	Post-excavation pair of features		25 th Aug	KB
154	Post-excavation postholes	N	25 th Aug	KB
155	W facing section postholes 031 (and 033 in plan)	W	25 th Aug	KB
156	W avenue postholes after excavation	N	25 th Aug	GN
157	W avenue postholes & tree throws after excavation	N	25 th Aug	GN
158	E avenue postholes after excavation	N	25 th Aug	GN
159	Post-excavation pair of features		25 th Aug	KB
160	Post-excavation pair of features		25 th Aug	KB
161	Unexcavated posthole		25 th Aug	GN

162	Post-excavation pair of features		25 th Aug	GN
163	Post-excavation group of features		25 th Aug	GN
164	General view along avenue	S	25 th Aug	GN
165	RY, AW, KB and minibus		25 th Aug	GN
166	Final planning, levels etc on site		25 th Aug	GN
167	SR, RY, AW, GM, KMill, MGon		25 th Aug	GN
168	S facing section of tree throw 088	S	27 th Aug	KB
169	Section of feature		27 th Aug	KB
170	Packing stones		27 th Aug	KB
171	N facing section of posthole (KB section)		27 th Aug	KB
172	NW facing section of feature 127		27 th Aug	KB
173	General view of trench from Dronachy Ridge	S	27 th Aug	KB
174	General view of trench from Dronachy Ridge	S	27 th Aug	KB
175	General view along Dronachy Ridge	E	27 th Aug	KB
176	General view of trench from Dronachy Ridge	S	27 th Aug	KB
177	General view of trench from Dronachy Ridge	S	27 th Aug	KB
178	NW facing section of feature 127	NW	27 th Aug	KB
179	NW facing section of feature 127	NW	27 th Aug	KB
180	Remnant of rig in E facing section of trench	E	27 th Aug	KB
181	Remnant of rig in E facing section of trench	E	27 th Aug	KB
182	Remnant of rig in W facing section of trench	W	27 th Aug	KB
183	RCAHMS hi-spy		27 th Aug	KB
184	-----Number not used-----			
185	N facing section of feature 184	N	27 th Aug	GN
186	S facing section of tree throw 088	S	27 th Aug	KB
187	GN at work		27 th Aug	KB
188	Section of posthole		27 th Aug	GN
189	Post-excavation posthole with packing stones		27 th Aug	GN
190	Post-excavation posthole with packing stones		27 th Aug	GN

Black & White Film:

FN07B W	Subject	From	Date	Taken by
Film 1				
1/1	General excavation shot	SSE	11 th Aug	KB
1/2	Pre-excavation feature 039	N	12 th Aug	KB
1/3	Pre-excavation feature 039	N	12 th Aug	KB
1/4	Pre-excavation feature 039	N	12 th Aug	KB
1/5	Pre-excavation posthole 037	W	12 th Aug	KB
1/6	Pre-excavation posthole 037	W	12 th Aug	KB
1/7	Pre-excavation posthole 037	W	12 th Aug	KB
1/8	Pre-excavation postholes 031 & 033	NE	12 th Aug	KB
1/9	Pre-excavation postholes 031 & 033	NE	12 th Aug	KB
1/10	Pre-excavation postholes 031 & 033	NE	12 th Aug	KB
1/11	Pre-excavation posthole 041	E	12 th Aug	KB
1/12	Pre-excavation posthole 041	E	12 th Aug	KB
1/13	Pre-excavation posthole 041	E	12 th Aug	KB
1/14	E facing section of posthole 023	E	12 th Aug	KB
1/15	E facing section of posthole 023	E	12 th Aug	KB
1/16	E facing section of posthole 023	E	12 th Aug	KB
1/17	E facing section of 'pyre' feature 005	E	12 th Aug	KB
1/18	E facing section of 'pyre' feature 005	E	12 th Aug	KB
1/19	E facing section of 'pyre' feature 005	E	12 th Aug	KB
1/20	S facing section of posthole 007	S	12 th Aug	GN
1/21	S facing section of posthole 007	S	12 th Aug	GN
1/22	S facing section of posthole 007	S	12 th Aug	GN
1/23	Pre-excavation posthole 035	W	12 th Aug	GN
1/24	Pre-excavation posthole 035	W	12 th Aug	GN
1/25	Pre-excavation posthole 035	W	12 th Aug	GN
1/26	N facing section of posthole 024	N	12 th Aug	TCR

1/27	N facing section of posthole 024	N	12 th Aug	TCR
1/28	N facing section of posthole 024	N	12 th Aug	TCR
1/29	General view of silt spread 002	N	14 th Aug	KB
1/30	General view of silt spread 002	N	14 th Aug	KB
1/31	General view of silt spread 002	N	14 th Aug	KB
1/32	Pre-excavation feature 045	SE	14 th Aug	KB
1/33	Pre-excavation feature 045	SE	14 th Aug	KB
1/34	Pre-excavation feature 045	SE	14 th Aug	KB
1/35	Pre-excavation feature 047	NW	14 th Aug	KB
1/36	Pre-excavation feature 047	NW	14 th Aug	KB
1/37	Pre-excavation feature 047	NW	14 th Aug	KB
Film 2				
2/1	S facing section of feature 054	S	14 th Aug	MGN
2/2	S facing section of feature 054	S	14 th Aug	MGN
2/3	S facing section of feature 054	S	14 th Aug	MGN
2/4	N facing section of feature 039	N	14 th Aug	FMP
2/5	N facing section of feature 039	N	14 th Aug	FMP
2/6	N facing section of feature 039	N	14 th Aug	FMP
2/7	S facing section of posthole 007	S	14 th Aug	TC
2/8	S facing section of posthole 007	S	14 th Aug	TC
2/9	S facing section of posthole 007	S	14 th Aug	TC
2/10	Pre-excavation feature 062	S	14 th Aug	KB
2/11	Pre-excavation feature 062	S	14 th Aug	KB
2/12	Pre-excavation feature 062	S	14 th Aug	KB
2/13	Fill 064 in situ in base of posthole 023	W	14 th Aug	KB
2/14	Fill 064 in situ in base of posthole 023	W	14 th Aug	KB
2/15	Working shot during excavations of N half of posthole 007	W	14 th Aug	TC
2/16	Working shot during excavations of N half of posthole 007	W	14 th Aug	TC
2/17	Working shot during excavations of N half of posthole 007	W	14 th Aug	TC
2/18	N facing section of posthole 013	N	15 th Aug	KB
2/19	N facing section of posthole 013	N	15 th Aug	KB
2/20	N facing section of posthole 013	N	15 th Aug	KB
2/21	Pre-excavation posthole 076	N	15 th Aug	KB
2/22	Pre-excavation posthole 076	N	15 th Aug	KB
2/23	Pre-excavation posthole 076	N	15 th Aug	KB
2/24	NW facing section of feature 047	NW	15 th Aug	RC
2/25	NW facing section of feature 047	NW	15 th Aug	RC
2/26	NW facing section of feature 047	NW	15 th Aug	RC
2/27	E facing section of posthole 022	E	15 th Aug	KB
2/28	E facing section of posthole 022	E	15 th Aug	KB
2/29	E facing section of posthole 022	E	15 th Aug	KB
2/30	W facing section of feature 062	W	15 th Aug	EM
2/31	W facing section of feature 062	W	15 th Aug	EM
2/32	W facing section of feature 062	W	15 th Aug	EM
2/33	Post-excavation posthole 023	S	15 th Aug	KB
2/34	Post-excavation posthole 023	S	15 th Aug	KB
2/35	NW facing section of feature 079	NW	15 th Aug	JM
Film 3				
3/1	NW facing section of feature 079	NW	15 th Aug	JM
3/2	NW facing section of feature 079	NW	15 th Aug	JM
3/3	E facing section of posthole 037	E	15 th Aug	KB
3/4	E facing section of posthole 037	E	15 th Aug	KB
3/5	E facing section of posthole 037	E	15 th Aug	KB
3/6	SW facing section of feature 078	SW	15 th Aug	GM
3/7	SW facing section of feature 078	SW	15 th Aug	GM
3/8	SW facing section of feature 078	SW	15 th Aug	GM
3/9	Post-excavation feature 062	NW	16 th Aug	EM
3/10	Pre-excavation feature 088	S	16 th Aug	KB
3/11	Pre-excavation feature 090	S	16 th Aug	GN
3/12	Pre-excavation feature 092	W	16 th Aug	GN
3/13	Pre-excavation tree throw 094	NW	16 th Aug	GN
3/14	Pre-excavation tree throw 094	NW	16 th Aug	GN
3/15	Pre-excavation tree throw 094	NW	16 th Aug	GN
3/16	Pre-excavation feature 110	NW	17 th Aug	GN
3/17	SE facing section of feature 086	SE	16 th Aug	GN
3/18	-----camera problem-----			
3/19	SE facing section of feature 086	SE	16 th Aug	GN
3/20	Pre-excavation tree throw 104	SW	16 th Aug	MGN
3/21	Pre-excavation tree throw 104	SW	16 th Aug	MGN

3/22	Pre-excavation tree throw 104	SW	16 th Aug	MGN
3/23	Pre-ex photo of postholes 041 & 109	NW	16 th Aug	KB
3/24	Pre-ex photo of postholes 041 & 109	NW	16 th Aug	KB
3/25	Pre-ex photo of postholes 041 & 109	NW	16 th Aug	KB
3/26	Pre-excavation tree throw 088	N	16 th Aug	KB
3/27	Pre excavation tree throw 088	N	16 th Aug	KB
3/28	In situ packing 108, posthole 076	N	16 th Aug	KB
3/29	In situ packing 108, posthole 076	N	16 th Aug	KB
3/30	-----no scale-----			
3/31	-----no scale-----			
3/32	E facing section of feature 090	E	17 th Aug	GM
3/33	E facing section of feature 090	E	17 th Aug	GM
3/34	E facing section of feature 090	E	17 th Aug	GM
3/35	Pre-excavation posthole 043	SW	17 th Aug	RY
3/36	Pre-excavation posthole 043	SW	17 th Aug	RY
3/37	Pre-excavation feature 110	NW	17 th Aug	KB
3/38	Post-excavation feature 086	SE	17 th Aug	FMP
Film 4				
4/1	-----film 4 shot-----			
4/2	Cremated bone in situ, fill 044, posthole 043	N	17 th Aug	RY
4/3	Cremated bone in situ, fill 044, posthole 043	N	17 th Aug	RY
4/4	Pre-excavation feature 114 [shutter problem]	NE	17 th Aug	GN
4/5	DW and GM discussing planning		17 th Aug	GN
4/6	S facing section of feature 028	S	17 th Aug	KB
4/7	E facing section of 'tree throw' 110	E	17 th Aug	KB
4/8	Burnt post 122 in situ, posthole 031	S	17 th Aug	KB
4/9	Burnt post 122 in situ, posthole 031	S	17 th Aug	KB
4/10	Burnt post 122 in situ, posthole 031, close-up version of above	S	17 th Aug	KB
4/11	Pre-excavation feature 123	E	18 th Aug	GN
4/12	-----camera problem-----			
4/13	-----camera problem-----			
4/14	E facing section of feature with cut 116	E	18 th Aug	AG
4/15	SW facing section of feature 114	SW	18 th Aug	GN
4/16	Pre-excavation feature 127	NW	18 th Aug	KB
4/17	SE facing section of feature 123	SE	19 th Aug	KMI
4/18	DW holding 'post' on open day	N	19 th Aug	GN
4/19	DW holding 'post' on open day	N	19 th Aug	GN
4/20	Pre-excavation posthole 132	E	19 th Aug	CMK
4/21	Pre-excavation slot 138	E	19 th Aug	AW
4/22	Pre-excavation slot 138	E	19 th Aug	AW
4/23	Pre-excavation posthole 139	W	19 th Aug	AS
4/24	WNW facing section of slot 138	WNW	19 th Aug	AW
4/25	W facing section of feature 143	W	19 th Aug	HS
4/26	E facing section of feature 136	E	19 th Aug	GN
4/27	NE facing section of feature 134	NE	19 th Aug	GN
4/28	S facing section of tree throw 088	S	19 th Aug	SW
4/29	Pre excavation posthole 146	W	21 st Aug	KMC
4/30	Pre-excavation feature 148	W	21 st Aug	DM
4/31	Pre-excavation feature 151	NNE	21 st Aug	KB
4/32	Pre-excavation feature 152	W	21 st Aug	KB
4/33	-----photo discarded-----			
4/34	W facing section of feature 152	W	21 st Aug	GN
4/35	NW facing section of box through tree throw 107	NW	21 st Aug	KB
4/36	Working shot of burnt material 121 in posthole 031	SE	21 st Aug	GN
Film 5				
5/1	KB at work		21 st Aug	GN
5/2	Working shot of large stones within linear feature 151	NE	21 st Aug	KB
5/3	Large packing stone 157 in situ within posthole 132	N	22 nd Aug	KB
5/4	W facing section of posthole 125	W	23 rd Aug	KB
5/5	W facing section of posthole 125	W	23 rd Aug	KB
5/6	E facing section of postholes 031 & 033	E	23 rd Aug	KB
5/7	E facing section of postholes 031 & 033	E	23 rd Aug	KB
5/8	Post-excavation posthole 007	N	23 rd Aug	KB
5/9	Post-excavation posthole 007	N	23 rd Aug	KB
5/10	Post-excavation posthole 022	NW	23 rd Aug	KB
5/11	Post excavation posthole 022	NW	23 rd Aug	KB
5/12	Post-excavation posthole 013	W	23 rd Aug	KB
5/13	Post-excavation posthole 013	W	23 rd Aug	KB

5/14	Post-excavation group of features 023, 134, 136	NE	23 rd Aug	KB
5/15	Post-excavation group of features 023, 134, 136	NE	23 rd Aug	KB
5/16	Working shot of tree throw 083 during excavation	SE	23 rd Aug	AG
5/17	Working shot of tree throw 083 during excavation	SE	23 rd Aug	AG
5/18	Working shot of tree throw 083 during excavation	SE	23 rd Aug	AG
5/19	Cremated bone in situ, in posthole 139	N	23 rd Aug	GN
5/20	Cremated bone in situ, in posthole 139	N	23 rd Aug	GN
5/21	Working shot showing packing in section of posthole 139	N	23 rd Aug	GN
5/22	E facing section of features 138 & 005	E	24 th Aug	KB
5/23	E facing section of features 138 & 005	E	24 th Aug	KB
5/24	E facing section of posthole 132	E	24 th Aug	CMK
5/25	E facing section of posthole 132	E	24 th Aug	CMK
5/26	Postpipe in plan within posthole 139	N	24 th Aug	KB
5/27	Postpipe in plan within posthole 139	N	24 th Aug	KB
5/28	SW facing section of feature 148	S	24 th Aug	SR
5/29	N facing section of posthole 139	N	25 th Aug	GN
5/30	N facing section of posthole 139	N	25 th Aug	GN
5/31	KB, SR at work		25 th Aug	GN
5/32	NW facing section of posthole 043	NW	25 th Aug	RY
5/33	NW facing section of posthole 043	NW	25 th Aug	RY
5/34	S facing section of tree throw 088	S	25 th Aug	GN
5/35	S facing section of tree throw 088	S	25 th Aug	GN
5/36	W facing section of posthole 146	W	25 th Aug	KMC
5/37	NW facing section of feature 173	NW	25 th Aug	KB
Film 6				
6/1	Packing stones from avenue post-hole 182	S	25 th Aug	KM
6/2	NW-facing section of avenue post-hole 182	NW	25 th Aug	KM
6/3	N-facing section of avenue post-hole 076	N	25 th Aug	KB
6/4	N-facing section of avenue post-hole 076	N	25 th Aug	KB
6/5	Post-excavation of oval pit 101	N	25 th Aug	GN
6/6	Small post 039 next to avenue post 037	N	25 th Aug	GN
6/7	Avenue post and small post 041/109	N	25 th Aug	GN
6/8	Tree throw 107 looking up W-side of avenue	N	25 th Aug	GN
6/9	Tree throw 085 looking up W-side of avenue	N	25 th Aug	GN
6/10	Pit 123 at end of E side of avenue	N	25 th Aug	GN
6/11	Unexcavated avenue post between 125 and 139	SE	25 th Aug	GN
6/12	Pit group 019 – sector C	S	25 th Aug	GN
6/13	Pit group 043, 047, 173 – sector A and B	N	25 th Aug	GN
6/14	General view N along avenue	N	25 th Aug	GN